

SuperMax^{BY LAGUNA}[®]

OWNERS'S MANUAL

SuperBrush 24 x 2

SuperBrush 36 x 2



LAGUNA

Thank you for investing in a SuperMax SuperBrush by Laguna Tools. This brush sander is one of a family of unique machines proudly offered by Laguna Tools. Every Laguna machine is engineered for years of dependable service. Please feel free to contact Laguna Tools if you have a question or suggestion. We appreciate working with you and your choice of a Laguna Tools machine for your shop.

Regards,
Torben Helshoj
President & Founder Laguna Tools

Dealer Machinery Warranty

New woodworking machines sold by Laguna Tools carry a two-year warranty effective from the date of dealer invoice to consumer. Machines sold through dealers must be registered with Laguna Tools within 30 days of purchase to be covered by this warranty. Laguna Tools guarantees all new machine sold to be free of manufacturers' defective workmanship, parts and materials. We will repair or replace, without charge, any parts determined by Laguna Tools, Inc. to be a manufacturer's defect. We require that the defective item/part be returned to Laguna Tools with the complaint. An RMA (return merchandise authorization) must be requested, from Laguna Tools, and included with any and all parts or machines returned to Laguna Tools for warranty consideration. Any machines returned to Laguna Tools must be returned with packaging in the same manner in which it was received. If a part or blade is being returned it must have adequate packaging to ensure no damage is received during shipping. In the event the item/part is determined to be damaged due to lack of maintenance, cleaning or misuse/abuse, the customer will be responsible for the cost to replace the item/part, plus all related shipping charges. This limited warranty does not apply to natural disasters, acts of terrorism, normal wear and tear, product failure due to lack of maintenance or cleaning, damage caused by accident, neglect, lack of or inadequate dust collection, misuse/abuse or damage caused where repair or alterations have been made or attempted by others.

This manual applies to the SuperBrush 24 x 2 and 36 x 2. Enter the model number and serial number below for quick reference when ordering accessories, supplies or parts.

Model: _____

Serial: _____

Laguna Tools
Grand Prairie

744 Refuge Way Suite 200
TX 75050

800-234-1976

www.lagunatools.com

CONTENTS

Warranty:	02
Unpacking:	04
Safety:	05
Important Safety Instructions	08
General Safety Rules	11
Assembly:	15
Components:	20
Power Supply:	21
Connecting Power	22
Wiring Diagrams	24
Operation:	26
Maintenance:	30
Trouble Shooting:	31
Exploded Views:	34
Parts List	36
Specifications:	47
Supplies:	47

UNPACKING

Your SuperBrush comes packed in a single box attached to a pallet. Before attempting to assemble this machine, follow these directions:

1. Remove the box covering the machine.
2. Remove the plastic cover from the machine.
3. Remove the small box, with casters and hardware, from the pallet.
4. Remove the bolts securing the machine to the pallet.
5. Confirm all parts are present and in good condition.



Figure 1: Inventory

NOTE: Electrical cord and plug are *not* included.

INVENTORY DESCRIPTION (QUANTITY)

- | | |
|-------------------------------|-------------------------------|
| A. Box (4 Casters & hardware) | D. Handwheel, height adj. (1) |
| B. Owner's Manual (1) | E. Key, ¼ x ¼ x 1-3/8" (2) |
| C. CR-2032 Batteries (2) | |



Figure 2: Casters & Hardware

Report any missing or damaged parts to your dealer or distributor. Prior to machine assembly and use, read this manual thoroughly to familiarize yourself with proper assembly, maintenance, and safety procedures.

SAFETY RULES

1. KEEP GUARDS IN PLACE and in working order.
2. REMOVE ADJUSTING KEYS AND WRENCHES. Form habit of checking to see that keys and adjusting wrenches are removed from tool before turning it on.
3. KEEP WORK AREA CLEAN. Cluttered areas and benches invite accidents.
4. DON'T USE IN DANGEROUS ENVIRONMENT. Don't use power tools in damp or wet locations, or expose them to rain. Keep work area well lighted.
5. KEEP CHILDREN AWAY. All visitors should be kept safe distance from work area.
6. MAKE WORKSHOP KID PROOF with padlocks, master switches, or by removing starter keys.
7. DON'T FORCE TOOL. It will do the job better and safer at the rate for which it was designed.
8. USE RIGHT TOOL. Don't force tool or attachment to do a job for which it was not designed.
9. USE PROPER EXTENSION CORD. Make sure your extension cord is in good condition. When using an extension cord, be sure to use one heavy enough to carry the current your product will draw. An undersized cord will cause a drop in line voltage resulting in loss of power and overheating. Table A shows the correct size to use depending on cord length and nameplate ampere rating. If in doubt, use the next heavier gage. The smaller the gage number, the heavier the cord.

Table A						
Ampere Rating		Volts	Total length of cord in feet			
		120	25	50	100	150
		240	50	100	150	300
More Than	Not More Than		Minimum gauge for cord			
0	6		18	16	16	14
6	10		18	16	14	12
10	12		16	16	14	12
12	16		14	12	Not Recommended	

NOTE* 50 Amp Service requires a 6 ga.(min) cord no longer than 25'.

10. **WEAR PROPER APPAREL** Do not wear loose clothing, gloves, neckties, rings, bracelets, or other jewelry which may get caught in moving parts. Non-slip footwear is recommended. Wear protective hair covering to contain long hair.
11. **ALWAYS USE SAFETY GLASSES.** Also use face or dust mask if cutting operation is dusty.
Everyday eyeglasses only have impact resistant lenses, they are NOT safety glasses.
12. **SECURE WORK.** Use clamps or a vise to hold work when practical. It's safer than using your hand and it frees both hands to operate tool.
13. **DON'T OVERREACH.** Keep proper footing and balance at all times.
14. **MAINTAIN TOOLS WITH CARE.** Keep tools sharp and clean for best and safest performance.
Follow instructions for lubricating and changing accessories.
15. **DISCONNECT TOOLS** before servicing; when changing accessories, such as blades, bits, cutters, and the like.
16. **REDUCE THE RISK OF UNINTENTIONAL STATING.** Make sure switch is in off position before plugging in.
17. **USE RECOMMENDED ACCESSORIES.** Consult the owner's manual for recommended accessories.
The use of improper accessories may cause risk of injury to persons.
18. **NEVER STAND ON TOOL** Serious injury could occur if the tool is tipped or if the cutting tool is unintentionally contacted.
19. **CHECK DAMAGED PARTS.** Before further use of the too., a guard or other part that is damaged should be carefully checked to determine that it will operate properly and perform its intended function - check for alignment of moving parts, binding of moving parts, breakage of parts, mounting, and any other conditions that may affect its operation. A guard or other part that is damaged should be properly repaired or replaced.
20. **DIRECTION OF FEED.** Feed work into a blade or cutter against the direction of rotation of the blade or cutter only.
21. **NEVER LEAVE TOOL RUNNING UNATTENDED. TURN POWER OFF.**
Don't leave tool until it comes to a complete stop.

SAFETY

READ AND UNDERSTAND THIS MANUAL AND ALL INSTRUCTIONS BEFORE USING THIS EQUIPMENT. Failure to follow all instructions may result in electric shock, fire and/or serious personal injury or property damage! Electronic copies of this manual are available at www.lagunatools.com.

SAFETY GUIDELINES - DEFINITIONS

This manual contains information that is important for you to know and understand. This information relates to protecting YOUR SAFETY and PREVENTING EQUIPMENT PROBLEMS. To help you recognize this information, we use the symbols below. Please read the manual and pay attention to these sections.



Indicates an imminently hazardous situation which, if not avoided, **will** result in death or serious injury.



Indicates a potentially hazardous situation which, if not avoided, **could** result in death or serious injury.



Indicates a potentially hazardous situation which, if not avoided, **may** result in minor or moderate injury.

CAUTION

(Used without the safety alert symbol) indicates a potentially hazardous situation which, if not avoided, **may** result in property damage.

Woodworking, metalworking, composites, etc. (and similar materials) can be dangerous if safe and proper operating procedures are not followed. As with all machinery, there are certain hazards involved with the operation of the machine. Using the machine with respect and caution will considerably lessen the possibility of personal injury. However, if normal safety precautions are overlooked or ignored, personal injury to the operator may result. Safety equipment such as guards, push sticks, hold-downs, featherboards, goggles, dust masks and hearing protection can reduce the potential for injury. Even the best guard will not make up for poor judgement, carelessness or inattention.

Always use common sense and exercise caution in the workshop. If a procedure feels dangerous, do not try it. Figure out an alternative procedure that is safer. **REMEMBER:** Your personal safety is your responsibility.

IMPORTANT SAFETY INSTRUCTIONS

WARNING

This machine was designed for certain applications only. We strongly recommend that this machine not be modified and/or used for any application other than that for which it was designed. If you have any questions relative to a particular application, DO NOT use the machine until you have first contacted the manufacturer to determine if it can or should be performed on the product.

If you have any questions relative to its application DO NOT use the product until you have contacted the manufacturer and we have advised you.

When using an electrical appliance/machine, basic precautions should always be followed, including the following:

READ ALL INSTRUCTIONS BEFORE USING (THIS MACHINE)!

WARNING

To reduce the risk of fire, electric shock, or injury:

1. Do not leave appliance when plugged in. Unplug from outlet when not in use and before servicing.
2. Do not use outdoors or on wet surfaces
3. Do not allow to be used as a toy. Close attention is necessary when used by or near children.
4. Use only as described in this manual. Use only manufacturer's recommended attachments.
5. Do not use with damaged cord or plug. If appliance is not working as it should, has been dropped, damaged, left outdoors, or dropped into water, return it to a service center.
6. Do not pull or carry by cord, use cord as a handle, close a door on cord, or pull cord around sharp edges or corners. Do not run appliance over cord. Keep cord away from heated surfaces.
7. Do not unplug by pulling on cord. To unplug, grasp the plug, not the cord.
8. Do not handle plug or appliance with wet hands.
9. Do not put any object into openings. Do not use with any opening blocked; keep free of dust, lint, hair, and anything that may reduce air flow.
10. Keep hair, loose clothing, fingers, and all parts of body away from openings and moving parts.
11. Turn off all controls before unplugging.
12. Use extra care when cleaning on stairs.
13. Do not use to pick up flammable or combustible liquids, such as gasoline, or use in areas where they may be present.
14. Connect to a properly grounded outlet only. See Grounding Instructions.

SAVE THESE INSTRUCTIONS

1. **Read and understand the warnings posted on the machine and in this manual. Failure to comply with all of these warnings may cause serious injury.**
2. Replace the warning labels if they become obscured or removed.
3. This SuperBrush is designed and intended for use by properly trained and experienced personnel only. If you are not familiar with the proper and safe operation of this type of machine, do not use until proper training and knowledge have been obtained.
4. Do not use this machine for other than its intended use. If used for other purposes, **LAGUNA TOOLS INC.**, disclaims any real or implied warranty and holds itself harmless from any injury that may result from that use.
5. Always wear approved safety glasses/face shields while using this machine.
6. Before operating this machine, remove tie, rings, watches and other jewelry, and roll sleeves up past the elbows. Remove all loose clothing and confine long hair. Non-slip footwear or anti-skid floor strips are recommended.
7. Wear ear protectors (plugs or muffs) during extended periods of operation.
8. Some dust created by power sanding, sawing, grinding, drilling and other construction activities contain chemicals known to cause cancer, birth defects or other reproductive harm. Some examples of these chemicals are: (next page)
 - Lead from lead-based paint.
 - Crystalline silica from bricks, cement, and other masonry products.
 - Arsenic and chromium from chemically treated lumber.

Your risk of exposure varies, depending on how often you do this type of work. To reduce your exposure to these chemicals, work in a well-ventilated area and work with approved safety equipment, such as face or dust masks/respirators that are specifically designed to filter out microscopic particles.

9. Do not operate this machine while tired or under the influence of drugs, alcohol or any medication.

10. Make certain the switch is in the **OFF** position before connecting the machine to the power source.
11. Make certain the machine is properly grounded.
12. Make all machine adjustments or maintenance with the machine unplugged from the power source.
13. Form a habit of checking to see that all extra equipment such as adjusting keys, wrenches, scrap, stock, and cleaning rags are removed away from the machine before turning on.
14. Keep safety guards in place at all times when the machine is in use. If removed for maintenance purposes, use extreme caution and replace the guards immediately when maintenance is complete.
15. Make sure the dust collector is on a flat even surface and the wheels locked in place before use.
16. Check damaged parts. Before further use of the machine, a guard or other part that is damaged should be carefully checked to determine that it will operate properly and perform its intended function. Check for alignment of moving parts, binding of moving parts, breakage of parts, mounting and any other conditions that may affect its operation. A guard or other part that is damaged should be properly repaired or replaced.
17. Provide for adequate space surrounding work area and non-glare, overhead lighting.
18. Keep the floor around the machine clean and free of scrap material, oil and grease.
19. Keep visitors a safe distance from the work area. **Keep children away.**
20. Make your workshop child proof with padlocks, master switches or by removing starter keys.
21. Give your work undivided attention. Looking around, carrying on a conversation and "horse-play" are careless acts that can result in serious injury.
22. Maintain a balanced stance at all times so that you do not fall or lean against the dust collector. Do not overreach or use excessive force to perform any machine operation.

23. Use the right tool at the correct speed and feed rate. Do not force a tool or attachment to do a job for which it was not designed. The right tool will do the job better and safer.
24. Use recommended accessories; improper accessories may be hazardous.
25. Maintain machinery with care. Follow instructions for lubricating and changing accessories.
26. Turn off the machine before cleaning. Use a brush or compressed air to remove dust or debris — do not use your hands.
27. Do not stand on the machine. Serious injury could occur if the machine tips over.
28. Never leave the machine running unattended. Turn the power off and do not leave the machine until it comes to a complete stop.
29. Never operate or run the machine without closing the drum up against the lid. Failure to do so will result in the machine amperage increasing and may trip your circuit.

Familiarize yourself with the following safety notices used in this manual:

SAFETY GUIDELINES - DEFINITIONS

This manual contains information that is important for you to know and understand. This information relates to protecting YOUR SAFETY and PREVENTING EQUIPMENT PROBLEMS. To help you recognize this information, we use the symbols, described earlier. Please read the manual and pay attention to these sections.

GENERAL SAFETY RULES



FAILURE TO FOLLOW THESE RULES MAY RESULT IN SERIOUS INJURY.

FOR YOUR OWN SAFETY, READ AND UNDERSTAND THE INSTRUCTION MANUAL BEFORE OPERATING THE MACHINE. Learn the unit's application and limitations as well as the specific hazards peculiar to it.

KEEP WORK AREA CLEAN. Cluttered areas and benches invite accidents.

DON'T USE IN DANGEROUS ENVIRONMENT. Don't use this unit in damp or wet locations or expose it to rain. Keep work area well-lighted.

KEEP CHILDREN AND VISITORS AWAY. All children and visitors should be kept a safe distance from work area.

DISCONNECT UNIT before servicing.

CHECK DAMAGED PARTS. Before further use of the unit, properly repair or replace any part that is damaged.



FAILURE TO FOLLOW THESE RULES MAY RESULT IN SERIOUS INJURY.

ADDITIONAL SAFETY INFORMATION

Intended use. This machine is intended for the applications discussed and approved by Laguna/SuperMax. Do not use this machine for non-approved applications or flammable, combustible, or hazardous materials.

Hazardous dust. Dust created while using machinery may cause cancer, birth defects, or long-term respiratory damage. Be aware of dust hazards associated with each work piece material, and always wear a NIOSH-approved respirator to reduce your risk.

Dust allergies. Dust from certain woods and other materials may cause an allergic reaction in people and animals. Make sure you know what type of dust you will be exposed to in case there is a possibility of an allergic reaction.

Wear respirator. Fine dust that is too small to be caught in the filter may be introduced into the ambient air during operation. Always wear a NIOSH-approved respirator during operation and for a short time after to reduce your risk of permanent respiratory damage.

Disconnecting power supply. Turn the switch off, disconnect from the power supply, and allow machine to come to a complete stop before leaving the machine unattended or doing any service, cleaning, maintenance, or adjustments.

Suspended dust particles and ignition sources. Do not operate in areas where explosion risks are high. Areas of high risk include, but are not limited to, areas near pilot lights, open flames, or other ignition sources.

Fire suppression. Only operate in locations that contain a fire suppression system or have a fire extinguisher nearby.

Static electricity. Plastic dust lines generate high amounts of static electricity as dust chips pass through them. Although rare, sparks caused by static electricity can cause explosions or fire. To reduce this risk, make sure all dust lines are thoroughly grounded by using a grounding wire.

Regular cleaning. Regularly check the machine for excessive dust and debris and clean. Make sure to regularly clean the surrounding area where the machine is operated—excessive dust buildup on overhead lights, heaters, electrical panels, or other heat sources will increase the risk of fire.

SAVE THESE INSTRUCTIONS.

Refer to them often and use them to instruct others.

Please read and save these instructions. Read carefully before attempting to assemble, install, operate or maintain the product described. Protect yourself and others by observing all safety information. Failure to comply with instructions could result in personal injury and/or property damage! Retain instructions for future reference.



DO NOT EXPOSE THE MACHINE TO RAIN OR OPERATE THE MACHINE IN DAMP LOCATIONS.

MOTOR SPECIFICATIONS

The typical main motor is 7-1/2 HP and is wired for 208-230 Volt, Three-Phase, 60 HZ, AC current. Confirm your motor electrical configuration before connecting power! Before connecting the machine to the power source, make sure the starter and switches are in the "OFF" position. Power Cord and "plug" are NOT included. These must be installed by a qualified technician/electrician to meet all applicable codes.



Confirm electrical configuration (Voltage & Phase) of brush machine before connecting to power source!

GROUNDING INSTRUCTIONS



THIS MACHINE MUST BE GROUNDED WHILE IN USE TO PROTECT THE OPERATOR FROM ELECTRIC SHOCK.

1. This machine must be connected to a grounded metal, permanent wiring system; or an equipment-grounding conductor must be run with the circuit conductors and connected to the equipment-grounding terminal or lead on the appliance.

The installer, such as a qualified electrician, shall cut (or bend over) and insulate the grounding conductor from a field wiring supply cable.

In the event of certain types of malfunctions or breakdowns, grounding provides a path of least resistance for electric current—in order to reduce the risk of electric shock.

Improper connection of the equipment-grounding wire can result in a risk of electric shock. The wire with green insulation (with or without yellow stripes) is the equipment-grounding wire. If repair or replacement of the power cord or plug is necessary, do not connect the equipment-grounding wire to a live (current carrying) terminal.

Check with a qualified electrician or service personnel if you do not understand these grounding requirements, or if you are in doubt about whether the tool is properly grounded. If you ever notice that a cord or plug is damaged or worn, disconnect it from power, and immediately replace it with a new one.

Full Load Amperage Draw; 208V 3 Phase 40.8 Amps

Power Supply Circuit Requirements

The power source circuit for your machine must be grounded and rated for the amperage given below. Never replace a circuit breaker on an existing circuit with one of higher amperage without consulting a qualified electrician to ensure compliance with wiring codes. **If you are unsure about the wiring codes in your area or you plan to connect your machine to a shared circuit, consult a qualified electrician.**

Circuit Size (208-230V, 3-Phase)50 Amp. Minimum



IN ALL CASES, MAKE CERTAIN THE RECEPTACLE OR DISCONNECT IS PROPERLY GROUNDED. IF YOU ARE NOT SURE, HAVE A QUALIFIED ELECTRICIAN CHECK THE RECEPTACLE OR DISCONNECT.

ASSEMBLY



This step requires a forklift. The SuperBrush is heavy, be careful when lifting and handling it with a forklift! Failure to comply may cause serious injury and/or damage to the machine and/or property!

Tools/items Required:

9/16" wrench

1/2" wrench

5mm hex wrench

Power Cord and Plug (unless hard wiring into a disconnect)

To assemble your SuperBrush, follow these steps:

For your own safety, do not connect the machine to the power source until the machine is completely assembled. Please also make sure that you read and understand the entire manual.

1. Make sure the eight locking set screws in the Table Support Castings are tight. Unbolt machine from pallet. Using a forklift, lift the SuperBrush from the pallet. The forks should lift from under the conveyor support cross members. Be careful when placing the forks not to damage other areas or wiring, Fig. 3 & 5.



Figure 3: Table Support Set Screws Caution Label

2. Attach the four casters to the legs of the machine by inserting the stud into the bottom hole and attaching a washer and nut.



Figure 4: Attaching casters

3. Lower the machine to the floor.

4. Loosen the four nuts then the four set screws locking the table support casting, Fig. 5. Finger tighten these same set screws. Hold the set screw with a Hex wrench and tighten the nut. Note, these set screws are brass tipped and are designed to lightly rub on the column.

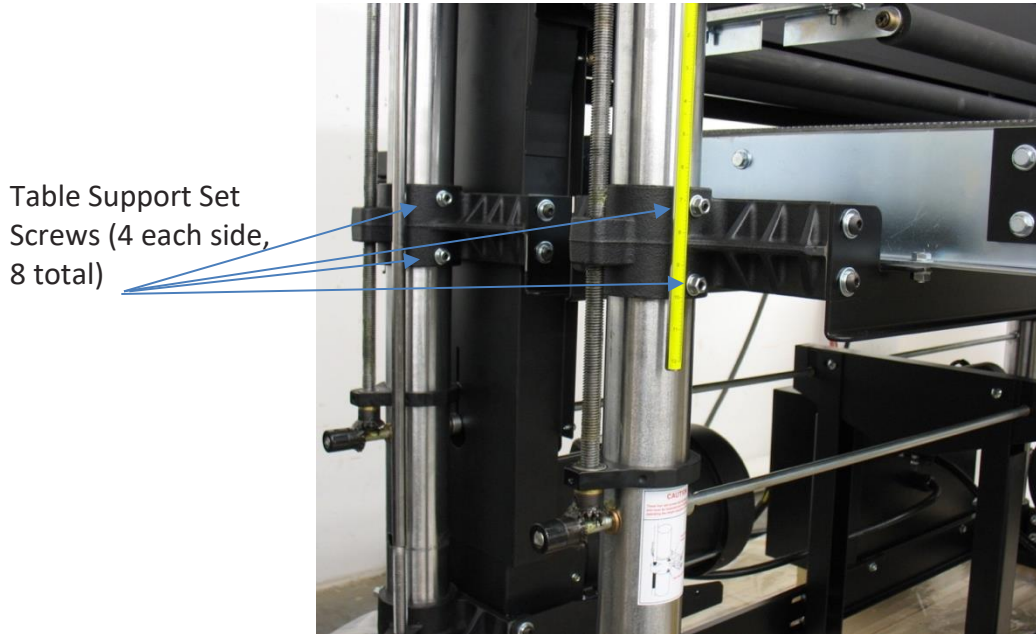


Figure 5: Table Support Set Screws

NOTE: There are four motor support screws pre-set at the factory. Adjustable for maintenance purposes, if necessary.



Motor Support
Set Screws (2 for
each motor, 4
total)

Figure 6: Motor Support Set Screws

5. Check tightness of all hardware.

NOTE: shipping can loosen nuts, bolts and set screws.

6. Remove shipping arbors (2) from brush machine, Fig. 7;

- A. Loosen drive belt by raising motor with motor tension handle on top of the column near drive belt.
- B. Slide drive belt off pulley.
- C. Remove two bolts from each bearing.
- D. Remove shipping arbor from brush sander.
- E. Loosen set screws in each bearing and driven pulley.
- F. Slide pulley and bearings off shaft for use with the brush heads.

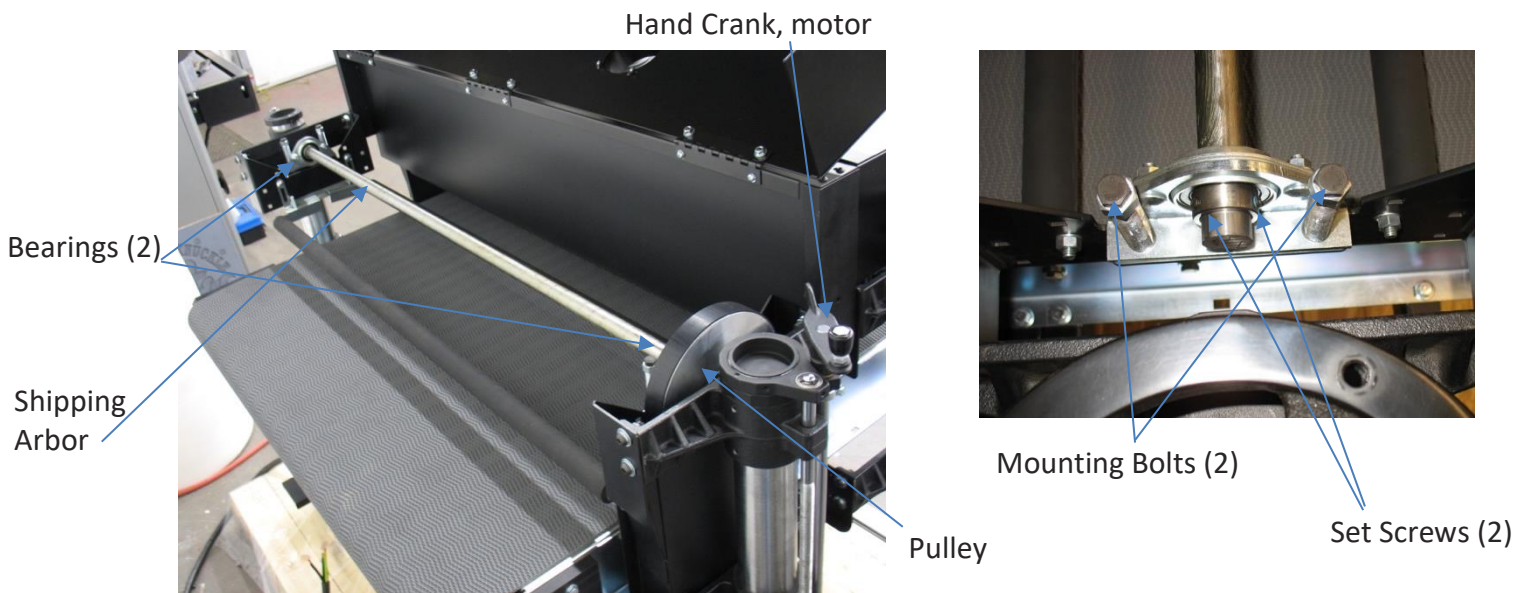


Figure 7A & B: Shipping Arbor and Bearings

7. Installing brush heads (same process for both brush heads);

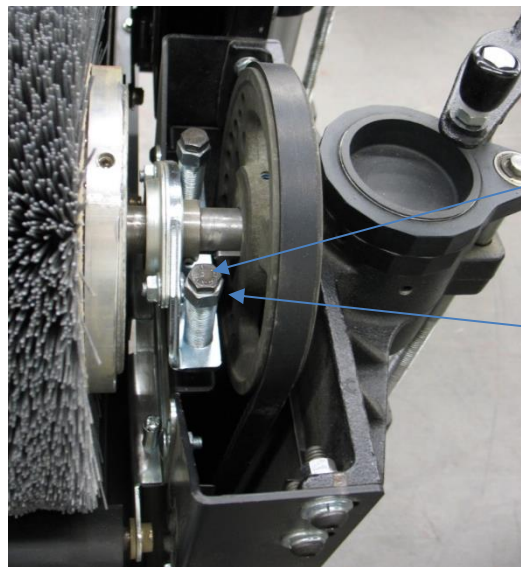
- A. Install brush heads (if not already installed) by removing brush head from shipping box.
- B. Slide one bearing (from Shipping Arbor) on each end of the brush shaft. Do not yet tighten the set screws for the bearing collar, Fig. 7B.
- C. Place the shaft key into the key slot of the drive shaft of the brush head.
- D. Slide the pulley, Fig. 7A (from Shipping Arbor) onto the drive shaft over the key.
- E. Raise the main motor by using the hand crank, Fig. 7A, at the top of the column to lift the motor.

- F. Place the brush head into the brush machine while holding the drive belt out-of-the-way.
- G. Center the brush head over the conveyor and install Mounting Bolts, Fig. 7B, from the flange of the bearing into the mating bracket of the brush machine. Tighten the bearing mounting bolts.
- H. Tighten the two set screws, Fig. 7B, in each bearing collar to secure the brush head shaft to the bearings.
- I. Align the pulley of the brush head with the drive pulley of the main motor. Secure by tightening the set screw(s) in the driven pulley.
- J. Lower the main motor for proper tension of the drive belt. Proper tension is slight deflection of the drive belt when pressed from the side.
- K. Make sure all bolts and set screws are tight.

8. Check alignment (parallelism) of the brush heads to the conveyor.

Measure from the bottom of the brush bristles to the top of the conveyor belt on the right and left side. If the brush head is not parallel;

- A. Loosen the two bearing bolts (that secure the bearing to the machine) on the lower side of the brush, Fig. 8.
- B. Raise the bearing on the low side by using a hex wrench in the center of the bearing stud and rotate both equally until the brush head is parallel.
- C. Tighten the bolts attaching the bearing to the machine bracket.



Bearing Bolts
(lock, 2 each
side)

Bearing Stud
(adjust, 2 each
side))

Figure 8: Aligning Brush Head

Dust Collection, Connection/Assembly

1. Connect dust collection hose to each 4" port on machine. Minimum of *600 CFM per port. *The CFM requirement can vary depending on brush head, application(s) and material. Assembly continued in "Power Supply".



Four, 4" dust ports SB24 x 2;

Six, 4" dust ports SB36 x 2

Figure 9: Dust Ports; (SB 24 x 2 shown)

COMPONENTS



Figure 10: Main Components of SuperBrush 36 x 2 (similar to SB 24 x 2)

POWER SUPPLY

Power Supply Circuit Requirements

The power source circuit for your machine must be grounded and rated for the amperage given below. Never replace a circuit breaker on an existing circuit with one of higher amperage without consulting a qualified electrician to ensure compliance with wiring codes. **If you are unsure about the wiring codes in your area or you plan to connect your machine to a shared circuit, consult a qualified electrician.**

Circuit Size (208-230V, 3 Phase)**50 Amp** minimum



IN ALL CASES, MAKE CERTAIN THE RECEPTACLE IN QUESTION IS PROPERLY GROUNDED. IF YOU ARE NOT SURE, HAVE A QUALIFIED ELECTRICIAN CHECK THE RECEPTACLE.

MOTOR SPECIFICATIONS

The standard main motors are 7-1/2 HP and are typically wired for 208-230 Volt, Three Phase, 60 HZ, AC current. Confirm your motors electrical configuration before connecting power! Before connecting the machine to the power source, make sure the starter and switches are in the "OFF" position. Cord and "plug" are NOT included. These must be installed by a qualified technician/electrician to all applicable codes.



Figure 11: Electrical Connection Box

Connecting Power

NOTE: A “plug” and cord are NOT included and must be installed by a qualified technician/electrician, or the power cable connected (hard wired) to an appropriate disconnect according to local codes.



A qualified electrician should do the connection. When completed, the machine must conform to the National Electric Code and all local codes and ordinances.

FUNCTION, Control Panel *Front*

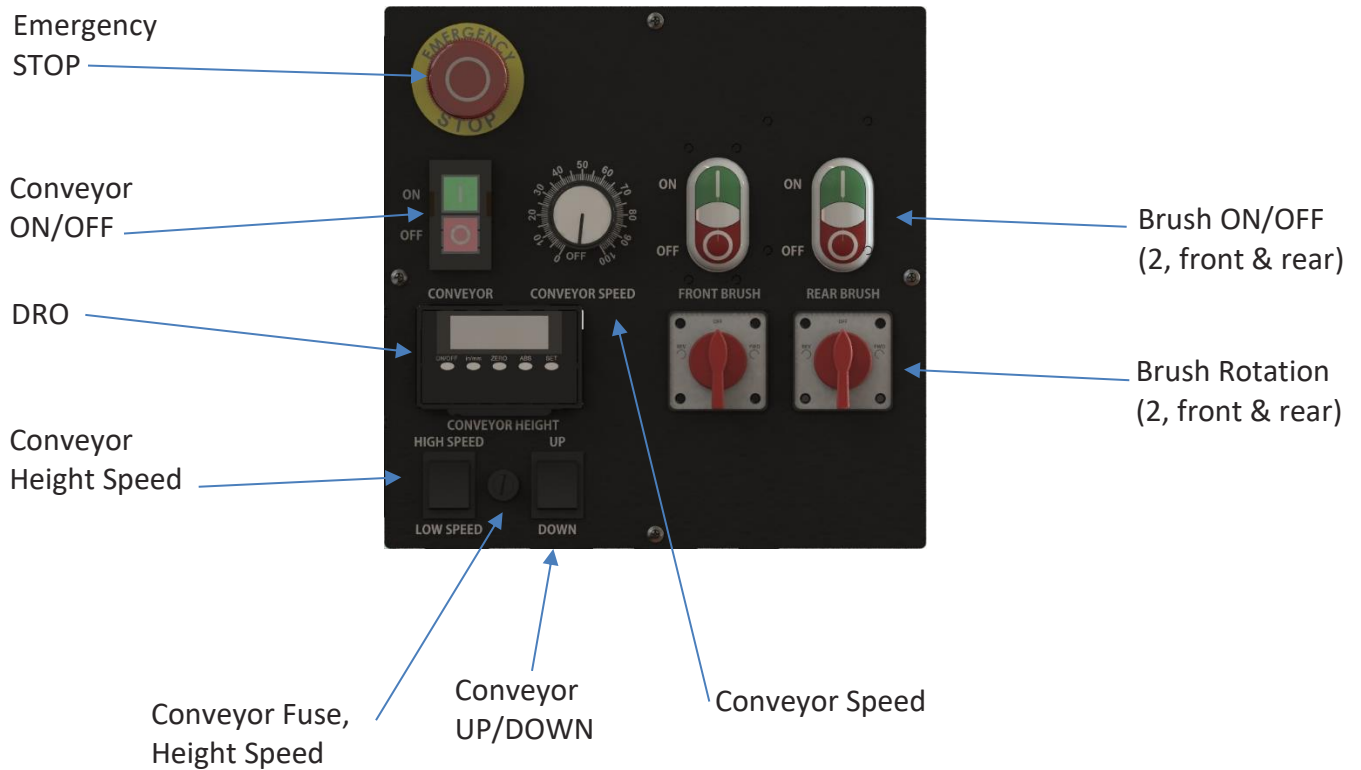


Figure 12: Control Box Components

FUNCTION, Control Panel *Back*

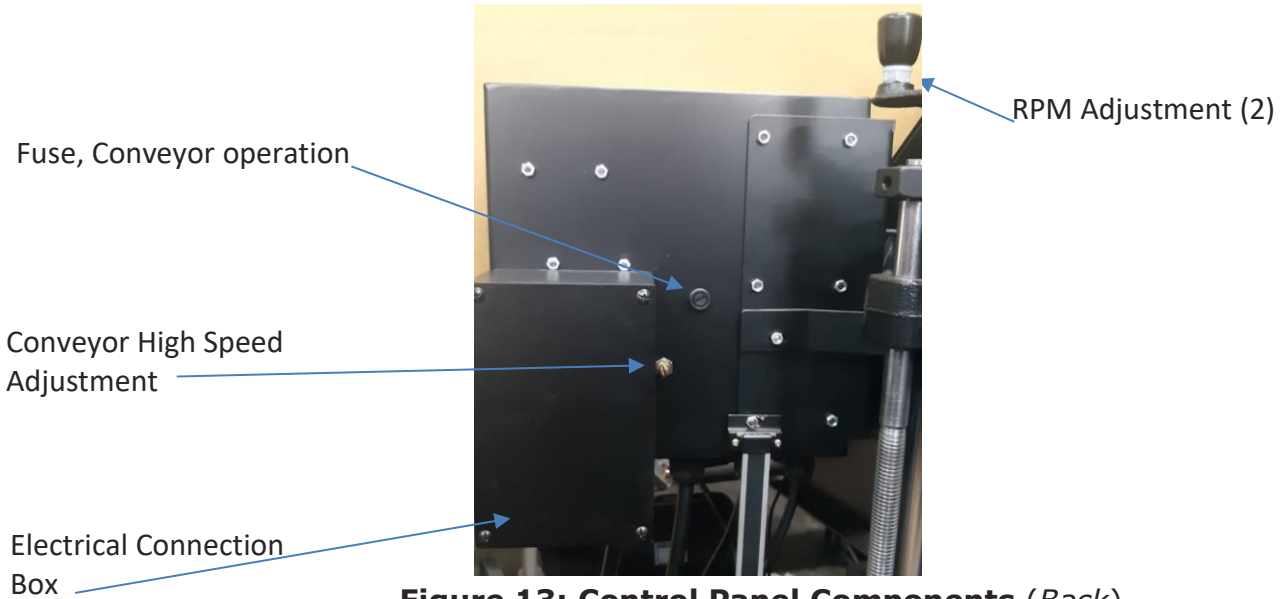


Figure 13: Control Panel Components (*Back*)

NOTE: The speed of “High Speed” Conveyor lifting can be adjusted on the back of the control panel with a rotating stud.

WIRING DIAGRAMS

POWER CONNECTIONS

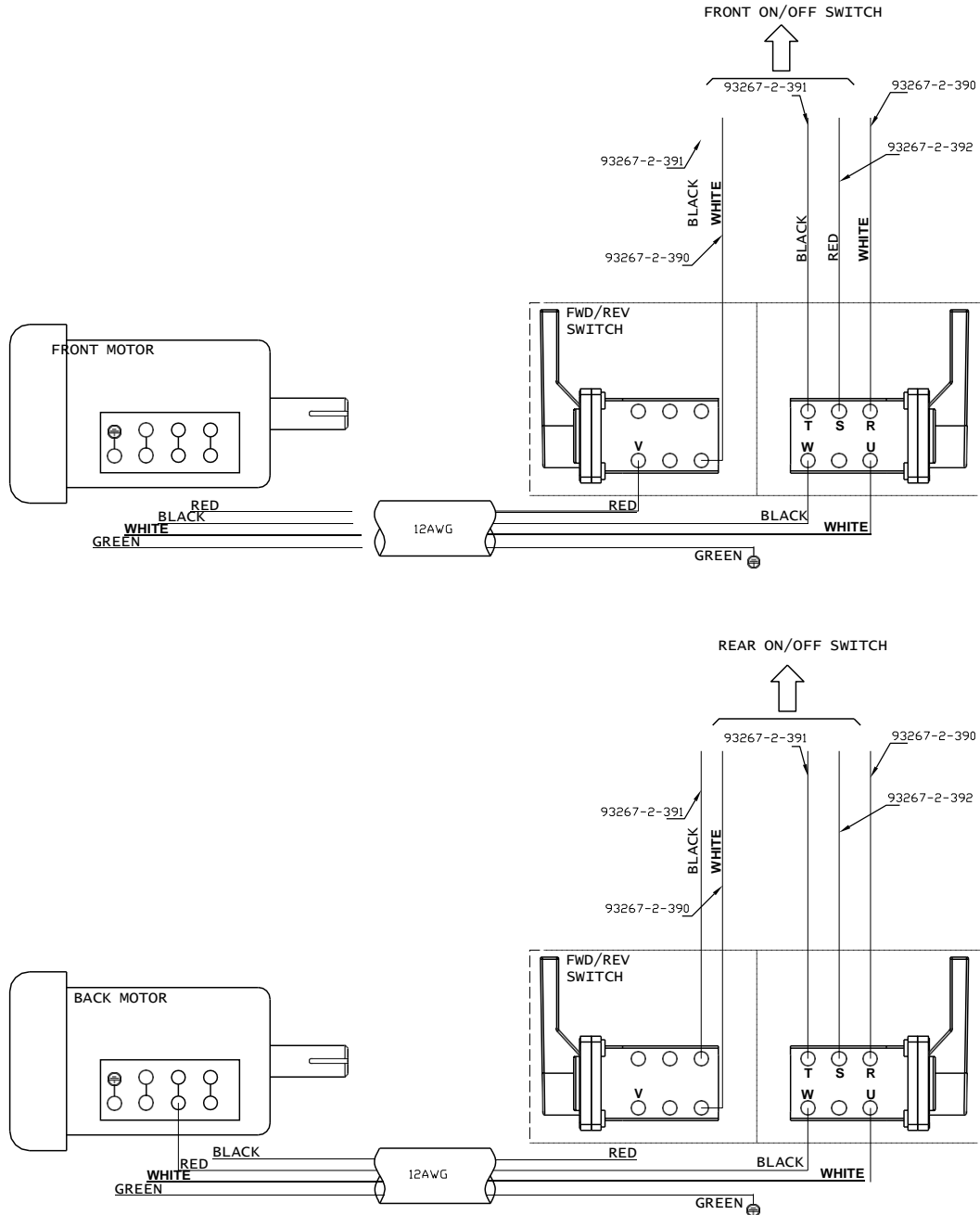


Figure 14: Power Connections & Wiring

INTERNAL WIRING

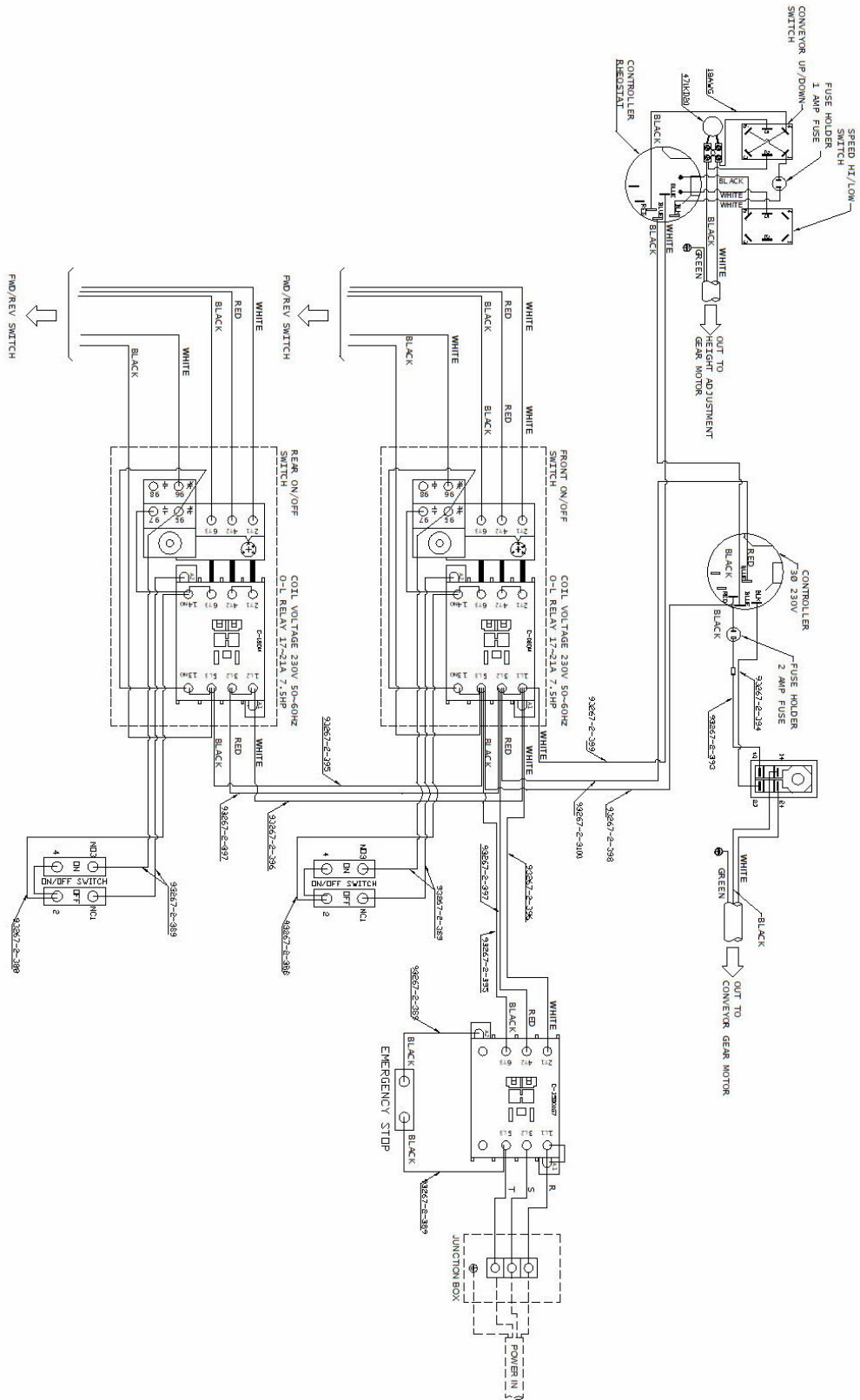


Figure 15: Internal Wiring

OPERATION

1. Confirm brush head is parallel to conveyor bed. Refer to "Checking Parallelism" to adjust if necessary.
2. Confirm the electrical supply is correct and connected to machine.
3. Make sure no one is working on or doing maintenance to machine.
4. Adjust contact of brush head onto material to be processed by either turning the height adjustment handle (1 revolution equals 3/32"), or by pressing the UP/DOWN switch on the control panel. NOTE: brush contact will vary with application(s), material and brush head configuration. Confirm correct contact with sample testing information or your salesperson.



Figure 16: Height Control Adjustments

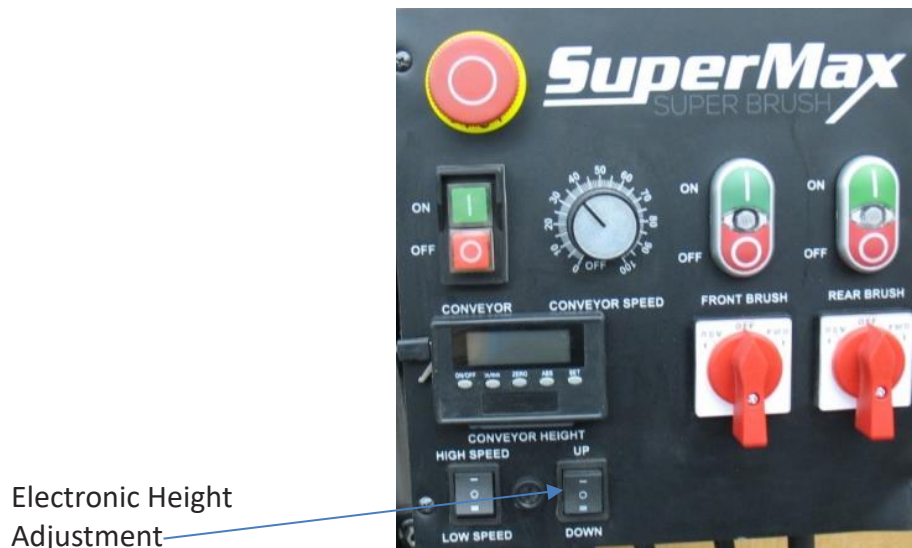


Figure 17: Height Control Adjustment, electronic

5. Confirm correct contact of hold-down (pressure) rollers. Adjust contact by loosening the roller bracket in each corner and raising or lowering to provide proper tension. Correct tension is achieved when material feeds through brush properly without slipping on the conveyor belt.

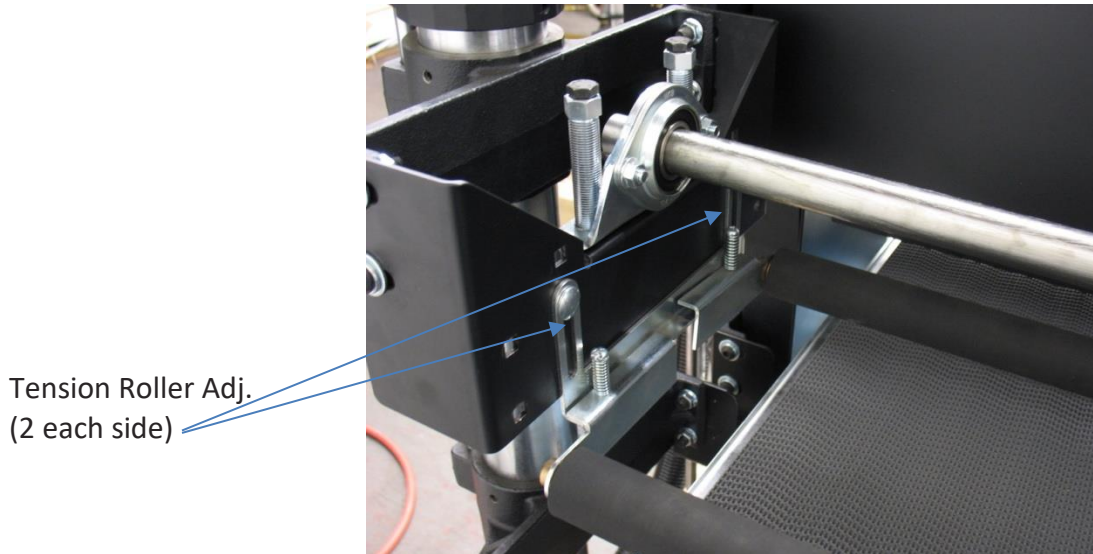


Figure 18: Tension (Hold-Down) Roller Adjustment

6. DRO;

Install two CR-2032 batteries (included) by pulling the DRO from the Control Box and removing the battery cover from the back and installing the batteries.

DRO Calibration; the typical method to use the DRO is to read the bristle penetration into stock being processed.

- A. With machine "OFF", place stock under the brush head.
- B. Adjust conveyor table (up or down) until the tip of the longest bristles are just about touching the material.
- C. Press "ON" to turn the DRO on, Fig. 19.
- D. Press "ZERO" to zero out the DRO, Fig. 19.
- E. Press "in/mm" to select desired inch or millimeter setting, Fig. 19.
- F. Remove material from under brush.
- G. Raise conveyor to desired setting/bristle penetration. See sample letter or confirm appropriate bristle penetration with salesperson.

NOTE: Appropriate bristle penetration will change with various applications, materials and brush wear. Adjust accordingly.

CAUTION

Excessive bristle penetration will prematurely shorten brush life!



Figure 19: DRO calibration

7. To start brush, press the "FRONT BRUSH" "ON" button on the front of the Control Panel, (Fig. 19 & 20). Confirm brush rotation is correct for application and material. If not correct, press OFF button, **wait for machine to stop**. Change rotation with rotation switch with "Front Brush". Turn ON brush.

8. Starting Conveyor;

- A. To start conveyor, press "CONVEYOR" "ON" button, Fig 20:
- B. Adjust speed of conveyor with "CONVEYOR SPEED" dial, 0-100%.



Figure 20: Brush & Conveyor controls

NOTE: Conveyor belt will require (periodic) adjustment to maintain proper tracking on conveyor bed. Adjust by tightening the adjustment stud, Fig. 21, with a **5mm Hex Wrench**) on the side the belt is drifting toward and loosen the opposite side an equal rotation.

NOTE: Make tracking adjustments before conveyor belt rubs on side of conveyor bed.

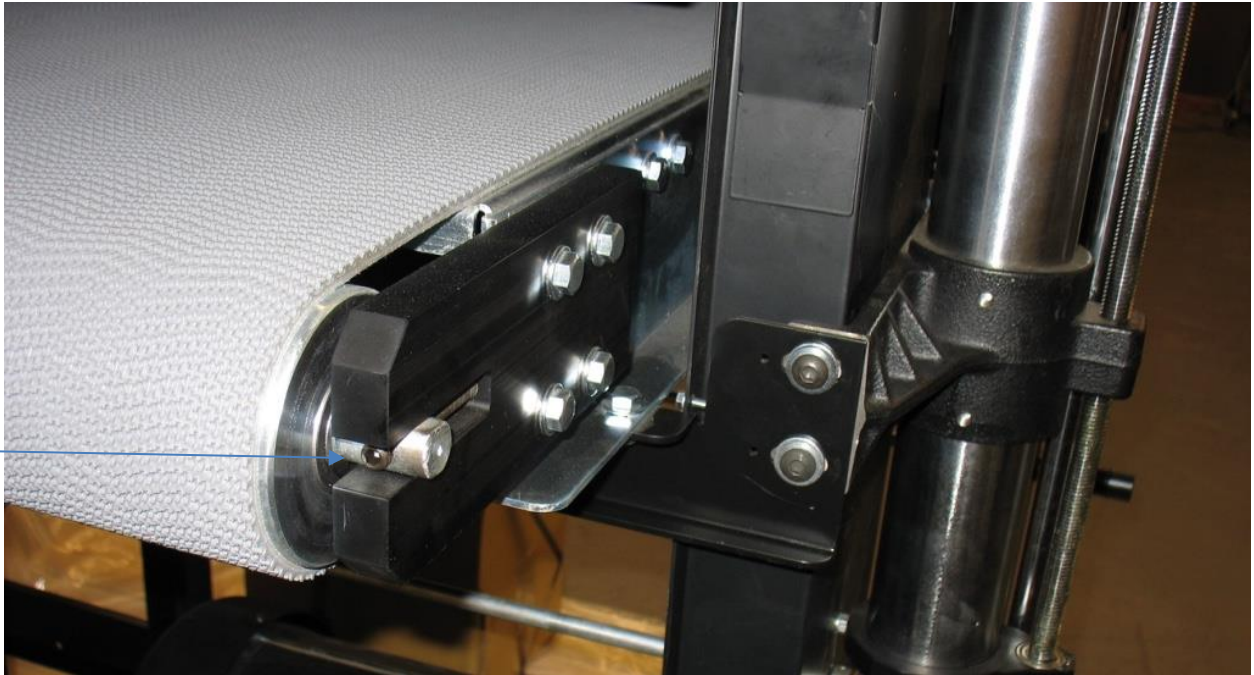


Figure 21: Conveyor Tracking

9. Each brush head has independent RPM Adjustment, (Fig. 10). While the brush is running, rotate the handle above each motor to adjust RPM. Confirm correct RPM setting with sample testing information or your salesperson. RPM reads out on yellow indicator near motor along column.

CAUTION

Excessive RPM will prematurely shorten brush life!

10. Start dust collector (open blast gates if so equipped).
11. Place material on conveyor and maintain control of stock until the tension roller is holding stock properly.
12. To stop, press the "OFF" buttons for the brush and conveyor, Fig. 20. Press the "E-STOP" button if there is an Emergency, Fig. 20! To reset the E-STOP button, twist and pull back on the button.

WARNING

The EMERGENCY STOP button should only be used for an Emergency! It disconnects all power to the machine during an Emergency. It should not be used as the normal shut down procedure and it should not be used when conducting maintenance. Power should be positively disconnected to the machine for maintenance or repairs.

MAINTENANCE

Conveyor Belt

Keep conveyor belt centered on conveyor bed. Adjust tracking stud as needed.

Keep conveyor belt clean to help prevent slippage of material.

Dust Collection

To ensure proper operation and longest brush life of the SuperBrush it is important to maintain full air flow of your dust collection system. Make sure the filter media is clean and there are no obstructions in the ducting.

TROUBLESHOOTING

Motors

Symptom	Possible Cause	Solution
Motors do not start	<ol style="list-style-type: none"> 1. Main power cord(s) un-plugged from receptacle. 3. Circuit fuse blown or circuit breaker tripped. 4. Conveyor motor fuse blown. 	<p>Plug in the primary power cord(s).</p> <p>Replace fuse or reset breaker(after determining cause).</p> <p>Replace fuse</p>
Brush motor overloads.	<ol style="list-style-type: none"> 1. Inadequate circuit. 2. Machine overloaded. 	<p>Check electrical requirements</p> <p>Use slower feed rate; slower brushRPM; reduce depth of cut.</p>
Conveyor motor oscillates.	<ol style="list-style-type: none"> 1. Motor not properly aligned. 2. Shaft collar or bushing worn. 3. Drive roller bent. 	<p>Loosen housing bolts, run motor,retighten bolts.</p> <p>Replace shaft collar or bushing.</p> <p>Replace drive roller.</p>
Brush motor or conveyor gearmotor stalls.	<ol style="list-style-type: none"> 1. Excessive depth of cut. 	<p>Reduce depth of cut; decrease brush speed; reduce feed rate.</p>

Conveyor

Symptom	Possible Cause	Solution
Conveyor rollers run intermittently.	1. Shaft coupling loose.	Align shaft flats of gear motor and drive roller; tighten shaft coupling set screws.
Conveyor belt slips on driveroller	1. Improper conveyor belt tension. 2. Excessive depth of cut	Adjust belt tension . Reduce depth of cut; reduce feedrate.
Stock slips on conveyor belt.	1. Excessive depth of cut. 2. Tension rollers too high. 3. Excessive feed rate. 4. Dirty or worn conveyor belt.	Reduce depth of cut. Lower tension rollers. Reduce feed rate. Clean or replace conveyor belt.
Conveyor belt tracks to one side,or oscillates from side to side.	1. Belt out of adjustment. 2. Drive or driven conveyor beltrollers misaligned. 3. Conveyor table not flat andsquare. 4. Conveyor belt worn. 5. Drive roller worn or damaged. 6. Roller bushings/bearings elongated due to excessive wear.	Readjust belt. Readjust. Readjust by leveling machine. Replace conveyor belt. Replace drive roller. Replace bushings/bearings.

Machine

Symptom	Possible Cause	Solution
Brush height adjustment works improperly.	1. Improper adjustment of height control.	Readjust height control.
Knocking sound while running.	1. V-belt worn. 2. Pulleys wobbling or out of round. 3. Set screws loose in pulley or bearing. 4. Bearing worn.	Replace V-belt. Tighten set screws or replace pulley. Retighten set screws. Replace bearing.
Sniping of stock (gouging near end).	1. Inadequate support of stock. 2. Conveyor drive or driven rollers higher than conveyor bed.	Use roller stands to support stock. Readjust rollers.
Burning of stock or melting of finish.	1. Feed rate too slow 2. Excessive depth of cut.	Increase feed rate. Reduce depth of cut, decrease brush RPM.
Gouging of stock.	1. Conveyor belt is too loose. 2. Excessive depth of cut. 3. Stock slipping on conveyor due to lack of contact.	Adjust belt tension. Reduce depth of cut, decrease brush RPM. Use alternate feeding procedure.

Exploded Views

STAND ASSEMBLY (1 of 2)

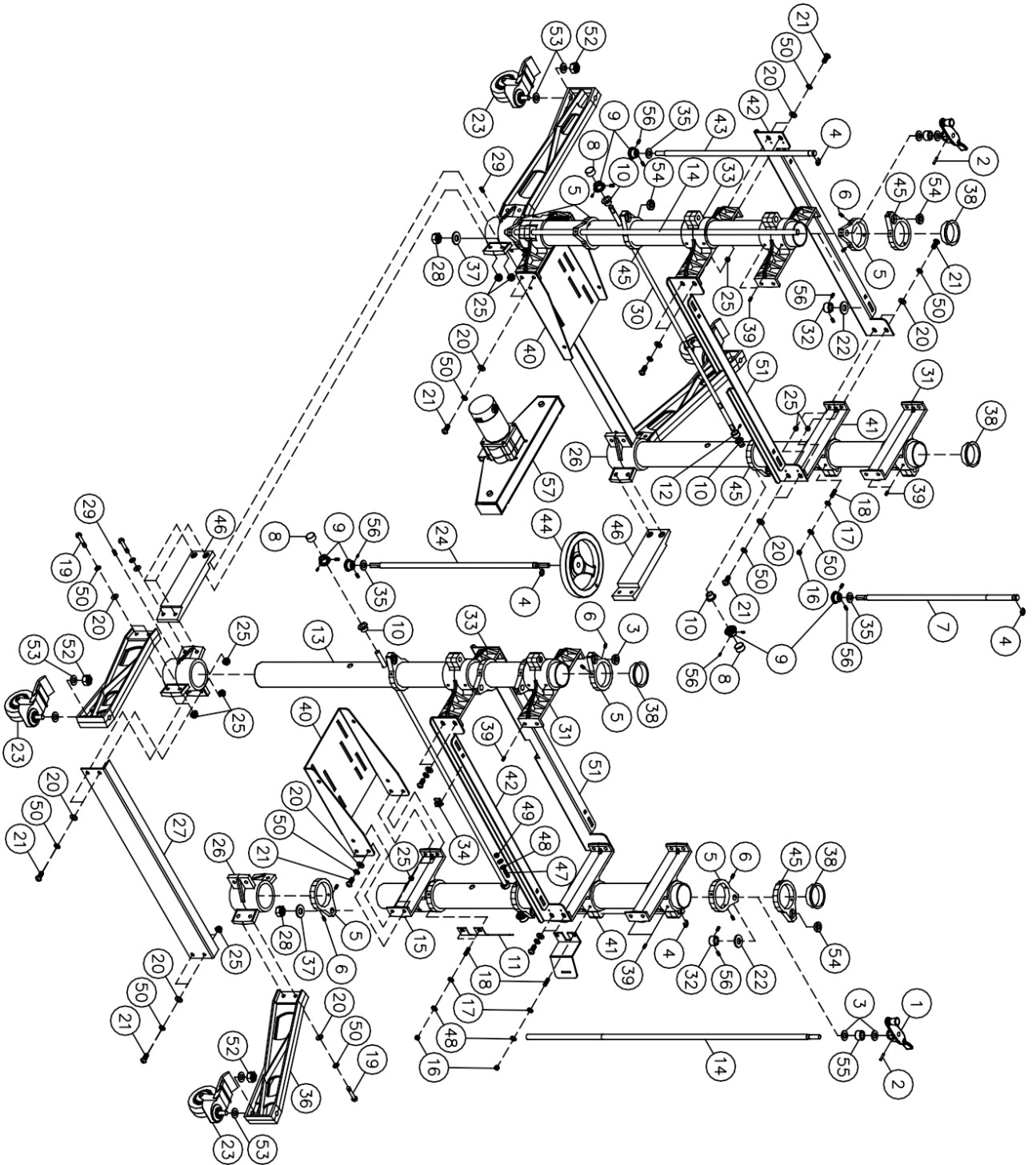


Figure 22: Stand Assembly

STAND ASSEMBLY (2 of 2) elec. hgt. adj.

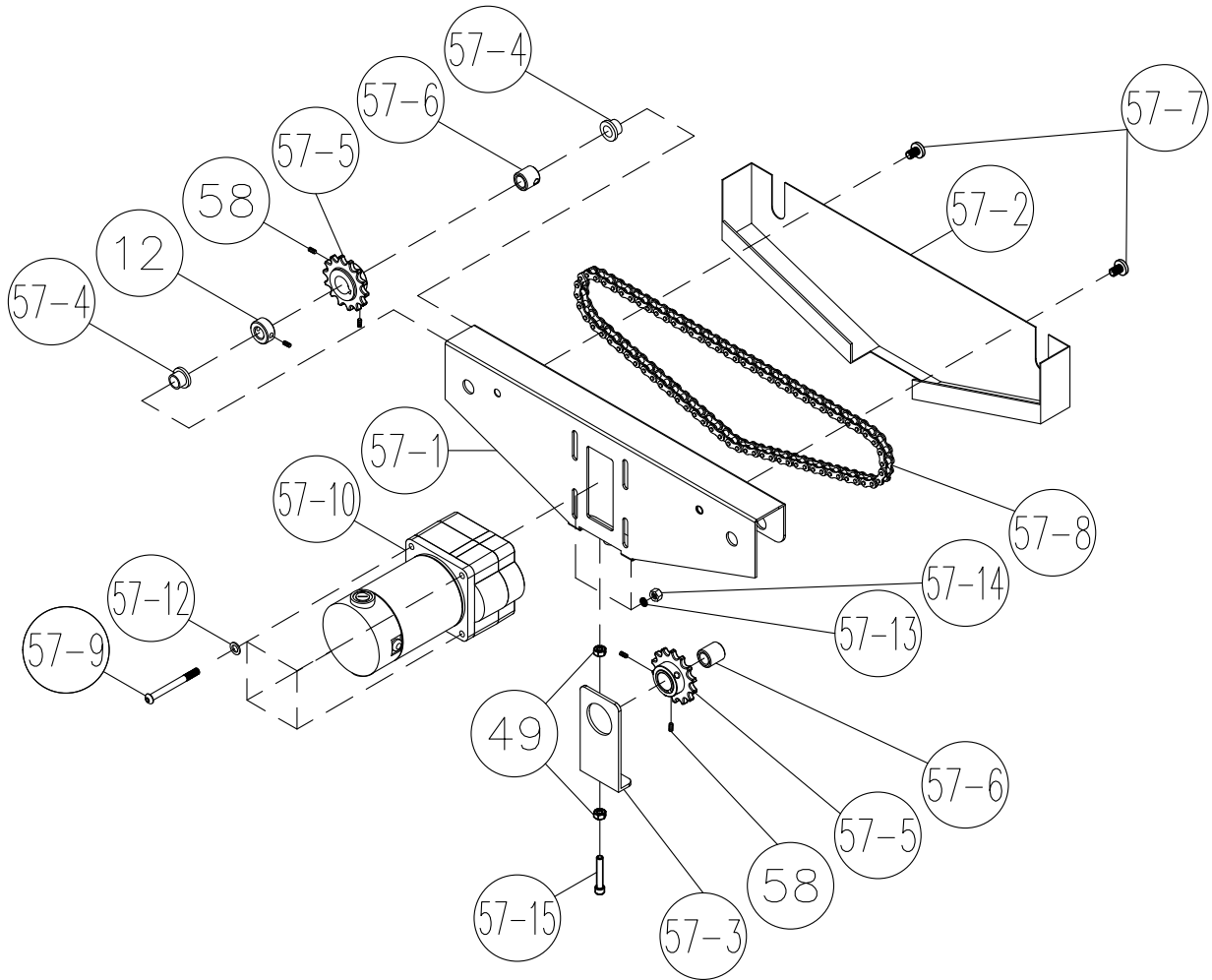


Figure 23: Stand Assembly electric height adj.

Stand Assembly Parts List

Ref. #	Description	Part Number			Qty.
		SB24x2	Both Models	SB36x2	
1	HANDLE, SWIVEL ASSY		31-0020		2
2	ROLL PIN, 3/16"x1"		20-0772		2
3	OILITE WASHER, 5/8 I.D.		50-3080		4
4	E-RING, E10		635DS-139		4
5	SUPPORT, ADJUSTING SCREW		30-1112		7
6	SET SCREW, 1/4-20x1/2		10-2804		26
7	SCREW, INBOARD HEIGHT ADJ. FOLLOW		30-1240		2
8	PLASTIC CAP, 1"		80-4013		4
9	GEAR, MITER HEAVY DUTY		20-1101-1		8
10	ROUND OILITE BUSHING, 1/2 I.D.		50-3107		8
11A	RPM, BRACKET		40-0670		2
11B	RPM, DECAL (not shown)		94-1674-1		2
12	SHAFT COLLAR, 1/2 I.D.		20-1103		6
13	TUBE, COLUMN		30-3044		4
14	SCREW, RPM, MOTOR		30-1209		2
15	MOUNT, MOTOR		30-5103		2
16	HEX NUT, 5/16-18		12-0003		12
17	FLAT WASHER, 5/16		11-0206		12
18	BRASS TIPPED SET SCREW, 5/16-18x3/4		10-9906		12
19	HEX CAP SCREW, 3/8-16x1-1/2		10-9207		16
20	FLAT WASHER, 3/8		11-9103		48
21	BUTTON HEAD SOCKET SCREW, 3/8-16x1-1/4		913002-121		32
22	NYLON WASHER		80-2324		2
23	CASTER		98-0131		4
24	SCREW, OUTBOARD HEIGHT ADJ. FOLLOW		30-1241		1
25	FLANGE LOCK NUT, 3/8-16		12-0209		48
26	BASE, COLUMN		30-1101-1		4
27	BASE SUPPORT BRACKET	40-0230		40-4241	2
28	NYLON INSERT LOCK NUT, 5/8-11		12-8015		2
29	SET SCREW, 1/2-13x1/2		10-8905		4
30	ROD, TRANSFER	30-3033-08		30-3033-07	2
31	SUPPORT BRUSH		30-5206		4
32	SPACER		20-1180-02		2

Ref. #	Description	Part Number			Qty.
		SB24x2	Both Models	SB36x2	
33	SUPPORT, OUTBOARD TABLE		30-5204		2
34	CORD HOLDER		93267-2-134		2
35	WASHER, OILITE		93267-2-135		4
36	LEG		30-1105		4
37	FLAT WASHER, 5/8x30x3		91267-146		2
38	CAP, PLASTIC COLUMN TUBE		80-4015		4
39	SET SCREW, 5/16-18x3/8		10-2903		16
40	MOTOR MOUNT		40-0106		2
41	SUPPORT, INBOARD TABLE		30-5205		2
42	BRACKET, TABLE MOUNT	40-0025		40-0037	2
43	SCREW, ADJUSTING, MAIN		30-1208HR		1
44	HEIGHT ADJUSTMENT HANDWHEEL		31-0027		1
45	SUPPORT, ADJUSTING SCREW, W/BEARING		30-1112-0		7
46	SPACER, STAND (LEG TIE)		30-1045		2
47	SET SCREW, 1/4-20x1 BRASS TIPPED		93267-2-147		2
48	FLAT WASHER, 1/4		480BS-145		4
49	HEX NUT, 1/4-20		12-0001		4
50	LOCK WASHER, 3/8		480BS-111		48
51	BRACKET, TABLE MOUNT	40-0025-1		40-0037-1	2
52	HEX NUT, 1/2-13		12-0009		4
53	FLAT WASHER, 1/2		93267-2-153		8
54	BEARING, R8ZZ		BB-R8ZZ		7
55	SPACER		93267-2-155		2
56	SET SCREW, 1/4-20x1/4		10-8802		20
57	SPROCKET ASSEMBLY		93267-2-157		1
57-1	BRACKET, CHAIN		93267-2-401		1
57-2	GUARD, CHAIN		93267-2-402		1
57-3	BRACKET, IDLER TENSION		93267-2-403		1
57-4	ROUND OILITE BUSHING, 1/2 I.D.		50-3107		4
57-5	SPROCKET		93267-2-405		3
57-6	SPACER		30-1405		3
57-7	SCREW, 5/16-18x1/2		93267-2-407		2
57-8	CHAIN, CONNECTING LINK		13-1014		1
57-9	SOCKET HEAD CAP SCREW, M6x1.0x80		93267-2-409		4

Ref. #	Description	Part Number			Qty.
		SB24x2	Both Models	SB36x2	
57-10	DC GEAR MOTOR, 180VDC	93267-2-410		93367-2-410	1
57-12	FLAT WASHER, M6		635DS-343		4
57-13	LOCK WASHER, M6		93267-2-414		4
57-14	HEX NUT, M6x1.0		635DS-344		4
57-15	SOCKET HEPAD CAP SCREW, 1/4-20x1-1/2		93267-2-416		1
58	SET SCREW, 1/4-20x1/4		480BS-113		6

HEAD ASSEMBLY (Front 1/2)

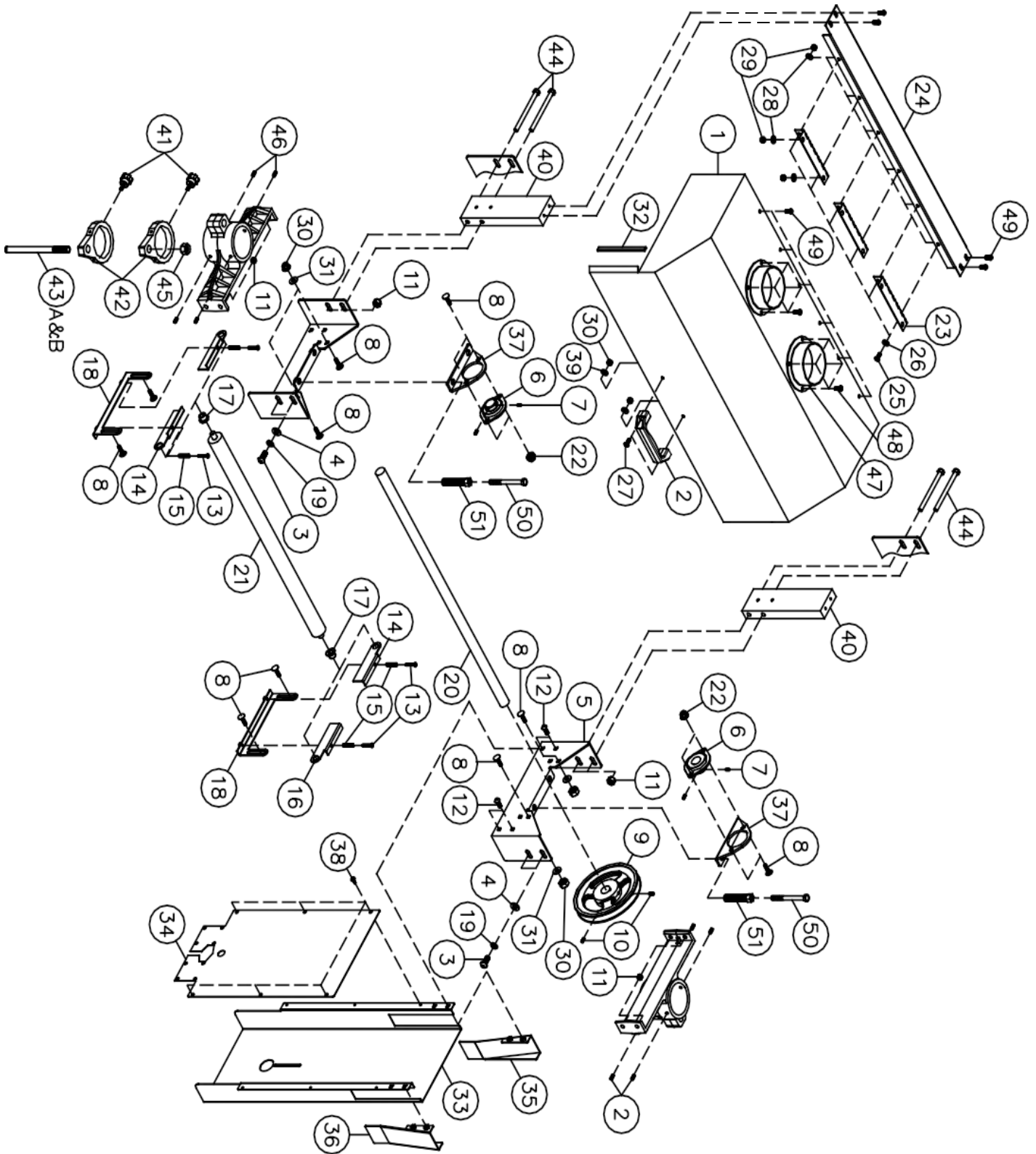


Figure 24: Head Assembly (Front 1/2, without brush)

Head Assembly Parts List

Ref #	Description	Part Number			Qty
		SB24x2	Both Models	SB36x2	
1	DUST COVER	41-3654		41-3656	2
2	HANDLE, DUST COVER		80-2841		2
3	BUTTON HEAD SOCKET SCREW, 3/8-16x1-1/4		913002-121		8
4	FLAT WASHER, 3/8x20x2		11-0104		12
5	BRACKET, BEARING MOUNTING		40-0613		4
6	BEARING		50-3067		4
7	SET SCREW, 1/4-20x1/4		10-8802		8
8	CARRIAGE BOLT, 5/16-18x3/4		10-1203		16
9	PULLEY		50-0701-1		2
10	SET SCREW, 5/16-18x3/8		10-8903		4
11	FLANGE LOCK NUT, 3/8-16		12-0209		12
12	BUTTON HEAD SOCKET SCREW, 5/16-18x3/8		91267-212		16
13	SCREW, 1/4-20x1-3/4		10-3213		8
14	BRACKET, LEFT SUSPENSION		40-0323		4
15	SPRING, TENSION ROLLER		20-3284		8
16	BRACKET, RIGHT SUSPENSION		40-0326		4
17	ROUND OILITE BUSHING, 1/2 I.D.		50-3107		8
18	BRACKET, SUSPENSION BASE		40-0322		4
19	LOCK WASHER, 3/8		480BS-111		8
20	ROD	93267-2-220		93367-2-220	2
21	ROLLER TENSION	30-1218		30-3218	4
22	FLANGE LOCK NUT, 5/16-18		12-0207		8
23	HINGE		40-0225		6
24	BRACKET, DUST COVER MOUNTING	40-3659		40-3658	1
25	SCREW, 1/4-20x1/2		10-3205		12
26	LOCK-INT. TOOTH WASHER, 1/4		11-0504		12
27	SCREW, 5/16-18x5/8		913022-203		4
28	FLAT WASHER, 1/4		480BS-145		24
29	HEX NUT, 1/4-20		12-0001		24
30	HEX NUT, 5/16-18		12-0003		12
31	LOCK-INT. TOOTH WASHER, 5/16		11-0505		8
33	GUARD, BELT COVER		40-0009		2
34	GUARD, BELT, PLATE		40-0010		2

Ref #	Description	Part Number			Qty
		SB24x2	Both Models	SB36x2	
35	GUARD, RIGHT BELT COVER		91267-235		2
36	GUARD, LEFT BELT COVER		91267-236		2
37	BEARING SET		93267-2-237		4
38	SLOTTED HEX HEAD SCREW, 10-24x3/8		10-3803		12
39	FLAT WASHER, 5/16		635DS-207		4
40	SPACER, HEAD		30-1310		2
41	KNOB, LOCKING W/SET SCREW		81-3132W		2
42	SUPPORT, ADJUSTING SCREW		30-1112		2
43A	DEPTH GAUGE ROD		30-1260HR		1
43B	DECAL, SCALE		94-1654		1
44	SOCKET HEAD CAP SCREW, 3/8-16x4-1/2		10-9209		4
45	HEX NUT, 1/2-13		925002-109		2
46	SET SCREW, 5/16-18x3/8		10-2903		16
47	DUST PORT		635DS-210		4 / 6
48	SCREW, 1/4-20x3/8		635DS-135		16 / 24
49	BUTTON HEAD SOCKET SCREW, 1/4-20x1/2		93267-2-249		16
50	HEX CAP SCREW, 3/8-16x4		93267-2-242		8
51	ADJUSTMENT NUT		93267-2-251		8

CONVEYOR ASSEMBLY

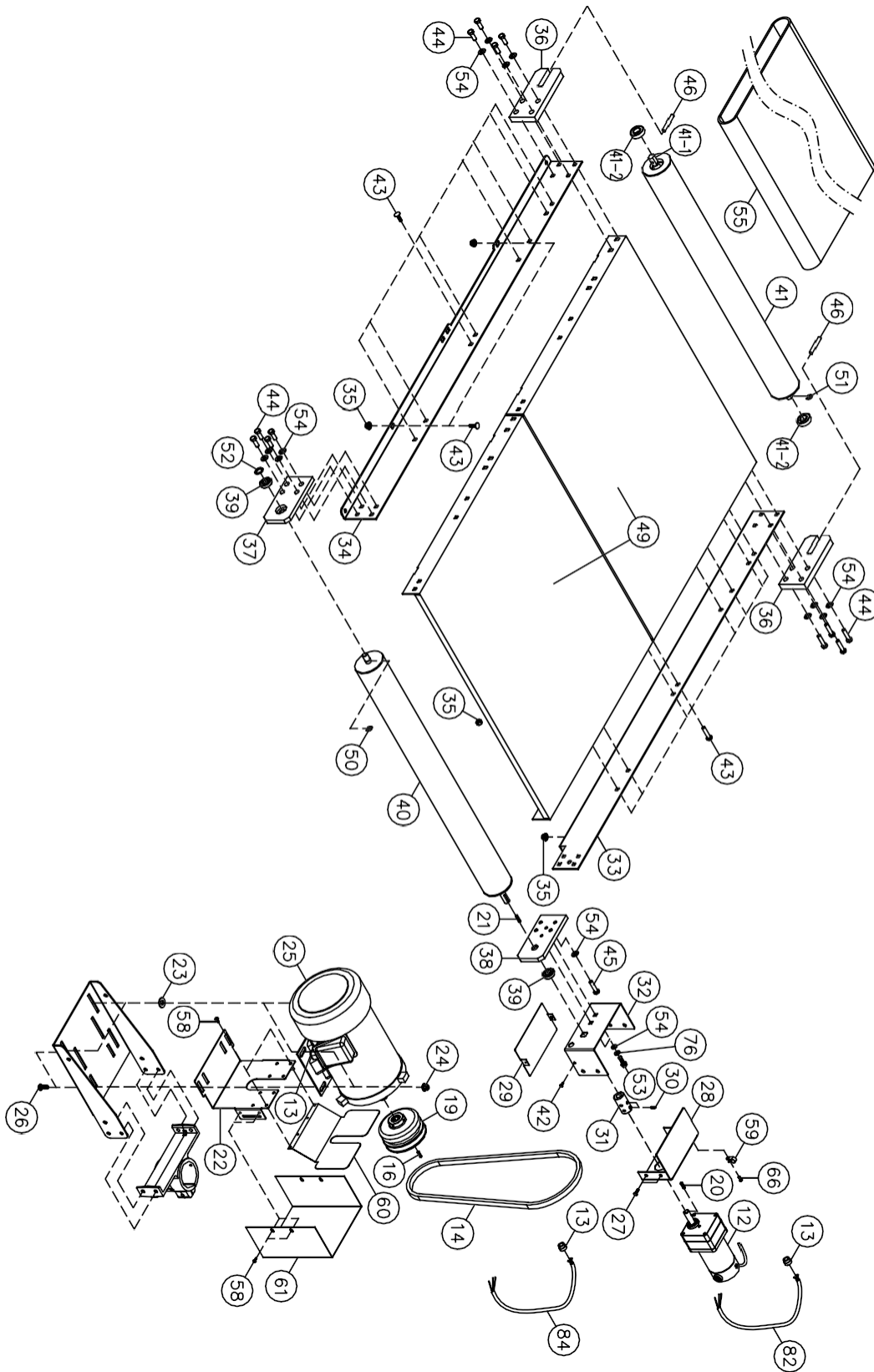


Figure 25: Conveyor Assembly

CONTROL PANEL ASSEMBLY (Incl. w/Conveyor Parts)

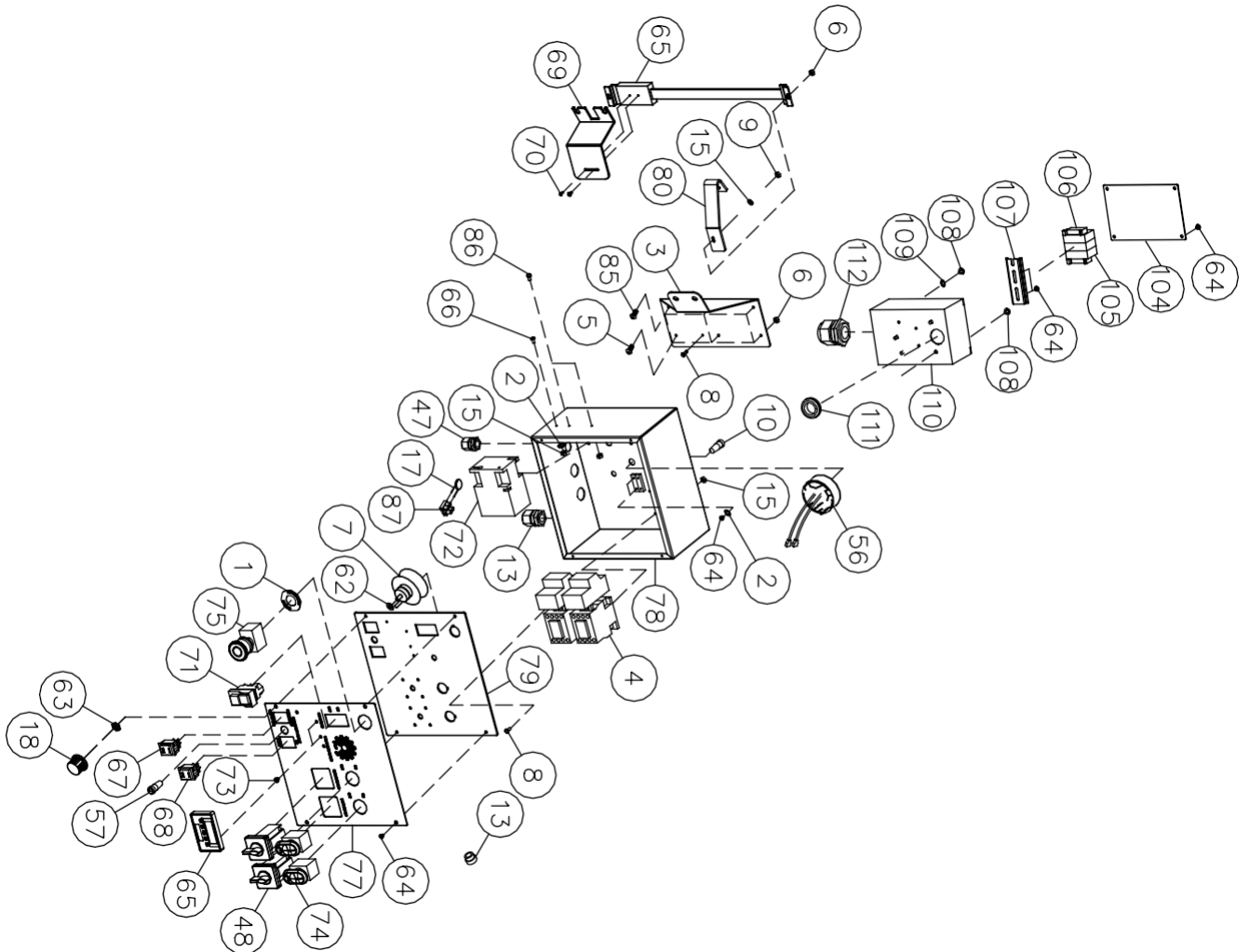


Figure 26: Control Panel Assembly (Included with Conveyor parts list)

Conveyor Assembly Parts List, includes Control Panel

Ref. #	Description	Part Number			Qty.
		SB24x2	Both Models	SB36x2	
1	EMERGENCY STOP LABEL		635DS-361		1
2	LOCK-EXT. TOOTH WASHER, M4		93267-2-302		5
3	CONTROL BOX SUPPORT BRACKET		93267-2-303		1
4	CONTACTOR		93267-2-304		2
5	BUTTON HEAD SOCKET SCREW, M5X0.8X8		93267-2-305		5
6	HEX NUT, M5x0.8		93267-2-306		6
7	CONTROLLER, 180 VDC, VARIABLE SPEED, CONVEYOR		72-1260		1
8	SCREW, M4x0.7x12		913002-328		5
9	FLAT WASHER, 8x4x1		93267-2-309		1
10	FUSE HOLDER		93267-2-310		1
12	DC GEAR MOTOR, 180VDC		93267-2-312		1
13	STRAIN RELIEF, PG-19		PG-19		4
14	V-BELT		50-2029-1		2
15	HEX NUT, M4x0.7		PLAREVO1836-1153		7
16	KEY, 1/4 x 1/4 x 4"		91267-352		2
17	ZINC OXIDE VARISTOR		93267-2-317		1
18	KNOB		72-6106-01A		1
19	PULLEY, DRIVE, VARIABLE SPEED		50-0704		2
20	KEY, 3/16"x3/16"x3/4"		20-0763		1
21	KEY, 3/16" x3/16"x1-1/4"		93267-2-321		1
22	LOWER, INNER BELT GUARD		40-1000		2
23	FLAT WASHER, 5/16		93267-2-323		4
24	FLANGE LOCK NUT, 5/16-18		12-0207		8
25	MOTOR, 7.5 HP. TEFC, 3Ph		70-0351		2
26	CARRIAGE BOLT, 5/16-18x1		635DS-234		8
27	HEX CAP SCREW, 5/16-18x1/2		10-9101		4
28	CONTROL HOUSING		40-5023-1		1
29	CONTROL BOX BASE BRACKET		40-4116		1
30	SET SCREW, 5/16-18x3/8		10-8902		2
31	COUPLER, 5/8		13-1017		1
32	BOTTOM COVER		40-4146		1
33	RAIL, BED RH		40-0502		1
34	RAIL, BED LH		40-0503		1
35	FLANGE LOCK NUT, 3/8-16		12-0209		36

Ref. #	Description	Part Number			Qty.
		SB24x2	Both Models	SB36x2	
36	BRACKET, DRIVEN ROLLER SUPPORT		40-4152		2
37	BRACKET, DRIVE ROLLER SUPPORT LH		40-4151		1
38	BRACKET, DRIVE ROLLER SUPPORT RH		40-4150		1
39	BEARING, DRIVE ROLLER		13-1016		2
40	ROLLER, DRIVE	30-3110		30-3108	1
41	ROLLER, DRIVEN	30-3111		30-3109	1
42	SCREW, 1/4-20x3/8		93267-2-375		2
43	CARRIAGE BOLT, 3/8-16x3/4		10-1302		20
44	HEX CAP SCREW, 3/8-16x1-1/2		10-9207		12
45	BUTTON HEAD SOCKET SCREW, 3/8-16x1		93267-2-345		4
46	SET SCREW, 3/8-16x3		10-9215		2
47	STRAIN RELIEF, POWER CORD, PG-11		PG-11		2
48	FWD/REV SWITCH		93267-2-348		2
49	CONVEYOR BED	40-4101		40-4201	2
50	E-RING, E-12		93267-2-350		2
51	E-RING, E-15		20-0753		2
52	STARKLOCK, 5/8		BV-6185		1
53	HEX CAP SCREW, 3/8-16x3/4		10-9205		2
54	FLAT WASHER, 3/8x20x2		11-0104		16
55	BELT, CONVEYOR POLYURETHANE	61-1011		61-1008	1
56	CONTROLLER, 180 VDC, VARIABLE SPEED, CONVEYOR		93267-2-356		1
57	FUSE HOLDER		72-6202-1		1
58	SLOTTED HEX HEAD SCREW, 10-24x3/8		10-3803		6
59	CORD HOLDER		93267-2-359		1
60	GUARD, BELT, ANGLED		40-0012		2
61	GUARD, BELT LOWER		40-0011		2
62	FLAT WASHER, 5/16 I.D. THIN		72-1270-3		2
63	JAM NUT, 5/16-32UNEF		72-1270-4		2
64	SCREW, M4x0.7x6		PLAREVO1836-1152		12
65	LCD MONITOR		93267-2-365		1
66	SCREW, M4x0.7x8		913002-169		2
67	SWITCH, HIGH/LOW		72-2051		1
68	SWITCH, UP/DOWN		72-2050		1
69	DRO MOUNTING PLATE		93267-2-369		1

Ref. #	Description	Part Number			Qty.
		SB24x2	Both Models	SB36x2	
70	SCREW, M3x0.5x8		93267-2-370		2
71	ON/OFF SWITCH, CONVEYOR		72-2004E		1
72	CONTACTOR		93267-2-372		1
73	SCREW, M3x0.5x6		93267-2-373		2
74	ON/OFF SWITCH, DRUM		PLAREVO1836-170		2
75	EMERGENCY STOP		PLAREVO1836-171		1
76	LOCK WASHER, 3/8		480BS-111		2
77	CONTROL PANEL LABEL		93267-2-377		1
78	CONTROL BOX		93267-2-378A		1
79	CONTROL PANEL		93267-2-379		1
80	CONTROL BOX SUPPORT BRACKET		93267-2-380		1
82	MOTOR CORD, FRONT MOTOR		93267-330		1
84	MOTOR CORD, REAR MOTOR		93267-330-1		1
85	BUTTON HEAD SOCKET SCREW, M5X0.8X12		93267-2-385		1
86	SCREW, M4x0.7x12 (BLACK)		93267-2-386		2
87	TERMINAL BLOCK		93267-2-387		1
104	JUNCTION BOX COVER		93497-3100		1
105	RAIL-MOUNT TERMINAL BLOCKS		93497-3101		3
106	END BRACKET		93497-2-391		2
107	DIN RAIL		93497-2-3103		1
108	SCREW, M5x0.8x8		93497-2-398		5
109	LOCK-EXT. TOOTH WASHER, M5		93497-2-3102		1
110	JUNCTION BOX		93497-399		1
111	RUBBER BUSHING, D25		PLAREVO1216-205		1
112	STRAIN RELIEF, PG-29		93497-384		1

Specifications: SuperBrush 24x2

Main Motor:	7-1/2 HP each (2)/ 1750 RPM
Electrical:	208-230V / 60Hz / 3PH
Circuit:	50 Amp (min.) at 208V, 3PH
Air Volume:	600 CFM per port (min.)
Inlet:	Four 4" ports
Switch:	ON/OFF for main motors, Conveyor & Lift, E-STOP
Packing Size: (L x W x H)	89" x 55" x 60" appx. (2269 x 1400 x 1530 mm)
Machine weight:	883 lbs. (401 kg.)
Shipping weight:	1342 lbs. (610 kg.)

SuperBrush 36x2

Main Motor:	7-1/2 HP each (2)/ 1750 RPM
Electrical:	208V - 230V / 60Hz / 3PH
Circuit:	50 Amp (min.) at 208V, 3PH
Air Volume:	600 CFM per port (min.)
Inlet:	Six 4" ports
Switch:	ON/OFF for main motors, Conveyor & Lift, E-STOP
Packing Size: (L x W x H)	89" x 67" x 60" appx. (2269 x 1700 x 1530 mm)
Machine weight:	997 lbs. (453 kg.)
Shipping weight:	1518 lbs. (689 kg.)

SUPPLIES:

Conveyor Belt:	SB24x2, Part #61-1011 SB36x2, Part #61-1008
Brush heads:	Part # varies



SuperMax
Tools

SUPERBRUSH 24x2

STOCK NO. 93267-2

POWER. 230V, 3Ph, 40.8A, 60Hz
650~1350 RPM

SERIAL NO.



Taiwan TCP



SuperMax
Tools

SUPERBRUSH 36x2

STOCK NO. 93367-2

POWER. 230V, 3Ph, 40.8A, 60Hz
650~1350 RPM

SERIAL NO.



Taiwan TCP

Contact Laguna Tools for supplies :

800-234-1976

www.lagunatools.com

LAGUNA TOOLS

744 Refuge Way Suite 200

Grand Prairie TX 75050

Ph: 800.234.1976

www.lagunatools.com

021122