

LAGUNA

OPERATING AND PARTS MANUAL 1HP One stage Dust Collector Model: BFLUX1



Please read and save these instructions. Read carefully before attempting to assemble, install, operate, or maintain the product described. Protect yourself and others by observing all safety information. Failure to comply with instructions could result in personal injury and/or property damage! Retain instructions for future reference.



TABLE OF CONTENTS

- Important Safety Instructions
- Safety Guidelines - Definitions
- General Safety Rules
 - Additional Safety For Dust Collectors
 - Power Connections
 - Motor Specifications
 - Grounding Instructions
- Key Features and Components
- Functional Description
- Product Specifications
- Assembly
 - General Tool Assembly
- Maintenance Procedures
 - Cleaning the Filter
 - Routine Inspection
- Trouble Shooting
- Parts breakdown and parts list



IMPORTANT SAFETY INSTRUCTIONS

▲WARNING

READ AND UNDERSTAND ALL WARNINGS AND OPERATING INSTRUCTIONS BEFORE USING THIS EQUIPMENT. Failure to follow all instructions listed below, may result in electric shock, fire, and/or serious personal injury or property damage.

Woodworking can be dangerous if safe and proper operating procedures are not followed. As with all machinery, there are certain hazards involved with the operation of the product. Using the machine with respect and caution will considerably lessen the possibility of personal injury. However, if normal safety precautions are overlooked or ignored, personal injury to the operator may result. Safety equipment such as guards, push sticks, hold-downs, featherboards, goggles, dust masks and hearing protection can reduce your potential for injury. But even the best guard will not make up for poor judgment, carelessness, or inattention. **Always use common sense** and exercise caution in the workshop. If a procedure feels dangerous, do not try it. Figure out an alternative procedure that feels safer. **REMEMBER:** Your personal safety is your responsibility.

▲WARNING

This machine was designed for certain applications only. We strongly recommend that this machine not be modified and/or used for any application other than that for which it was designed. If you have any questions relative to a particular application, DO NOT use the machine until you have first contacted the manufacturer to determine if it can or should be performed on the product.

If you have any questions relative to its application DO NOT use the product until you have contacted the manufacturer and we have advised you.

When using an electrical appliance, basic precautions should always be followed, including the following:

READ ALL INSTRUCTIONS BEFORE USING (THIS APPLIANCE)

▲WARNING

- To reduce the risk of fire, electric shock, or injury:
1. Do not leave appliance when plugged in. Unplug from outlet when not in use and before servicing.
 2. Do not use outdoors or on wet surfaces
 3. Do not allow to be used as a toy. Close attention is necessary when used by or near children.
 4. Use only as described in this manual. Use only manufacturer's recommended attachments.



5. Do not use with damaged cord or plug. If appliance is not working as it should, has been dropped, damaged, left outdoors, or dropped into water, return it to a service center.
6. Do not pull or carry by cord, use cord as a handle, close a door on cord, or pull cord around sharp edges or corners. Do not run appliance over cord. Keep cord away from heated surfaces.
7. Do not unplug by pulling on cord. To unplug, grasp the plug, not the cord.
8. Do not handle plug or appliance with wet hands.
9. Do not put any object into openings. Do not use with any opening blocked; keep free of dust, lint, hair, and anything that may reduce air flow.
10. Keep hair, loose clothing, fingers, and all parts of body away from openings and moving parts.
11. Turn off all controls before unplugging.
12. Use extra care when cleaning on stairs.
13. Do not use to pick up flammable or combustible liquids, such as gasoline, or use in areas where they may be present.
14. Connect to a properly grounded outlet only. See Grounding Instructions.

SAVE THESE INSTRUCTIONS

1. Read and understand the warnings posted on the machine and in this manual. Failure to comply with all these warnings may cause serious injury.
2. Replace the warning labels if they become obscured or removed.
3. This 3HP Portable Cyclone Dust Collector is designed and intended for use by properly trained and experienced personnel only. If you are not familiar with the proper and safe operation of this type of dust collector, do not use until proper training and knowledge have been obtained.
4. Do not use this machine for other than its intended use. If used for other purposes, **LAGUNA TOOLS INC.**, disclaims any real or implied warranty and holds itself harmless from any injury that may result from that use.
5. Always wear approved safety glasses/face shields while using this machine.
6. Before operating this dust collector, remove tie, rings, watches and other jewelry, and roll sleeves up past the elbows. Remove all loose clothing and confine long hair. Non-slip footwear or anti-skid floor strips are recommended. Do **not** wear gloves.
7. Wear ear protectors (plugs or muffs) during extended periods of operation.



8. Some dust created by power sanding, sawing, grinding, drilling and other construction activities contain chemicals known to cause cancer, birth defects or other reproductive harm. Some examples of these chemicals are:
 - Lead from lead-based paint.
 - Crystalline silica from bricks, cement, and other masonry products.
 - Arsenic and chromium from chemically treated lumber.

Your risk of exposure varies, depending on how often you do this type of work. To reduce your exposure to these chemicals, work in a well-ventilated area and work with approved safety equipment, such as face or dust masks that are specifically designed to filter out microscopic particles.

9. Do not operate this machine while tired or under the influence of drugs, alcohol, or any medication.
10. Make certain the switch is in the **OFF** position before connecting the machine to the power source.
11. Make certain the machine is properly grounded.
12. Make all machine adjustments or maintenance with the machine unplugged from the power source.
13. Form a habit of checking to see that all extra equipment such as adjusting keys, wrenches, scrap, stock, and cleaning rags are removed away from the machine before turning on.
14. Keep safety guards in place at all times when the machine is in use. If removed for maintenance purposes, use extreme caution, and replace the guards immediately when maintenance is complete.
15. Make sure the dust collector is on a flat even surface and the wheels locked in place before use.
16. Check damaged parts. Before further use of the machine, a guard or other part that is damaged should be carefully checked to determine that it will operate properly and perform its intended function. Check for alignment of moving parts, binding of moving parts, breakage of parts, mounting and any other conditions that may affect its operation. A guard or other part that is damaged should be properly repaired or replaced.
17. Provide for adequate space surrounding work area and non-glare, overhead lighting.



18. Keep the floor around the machine clean and free of scrap material, oil, and grease.
19. Keep visitors a safe distance from the work area. **Keep children away.**
20. Make your workshop child proof with padlocks, master switches or by removing starter keys.
21. Give your work undivided attention. Looking around, carrying on a conversation and "horse-play" are careless acts that can result in serious injury.
22. Maintain a balanced stance at all times so that you do not fall or lean against the dust collector. Do not overreach or use excessive force to perform any machine operation.
23. Use the right tool at the correct speed and feed rate. Do not force a tool or attachment to do a job for which it was not designed. The right tool will do the job better and safer.
24. Use recommended accessories; improper accessories may be hazardous.
25. Maintain machinery with care. Follow instructions for lubricating and changing accessories.
26. Turn off the machine before cleaning. Use a brush or compressed air to remove dust or debris — do not use your hands.
27. Do not stand on the machine. Serious injury could occur if the machine tips over.
28. Never leave the machine running unattended. Turn the power off and do not leave the machine until it comes to a complete stop.

Familiarize yourself with the following safety notices used in this manual:

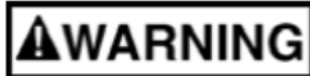
SAFETY GUIDELINES - DEFINITIONS

This manual contains information that is important for you to know and understand. This information relates to protecting YOUR SAFETY and PREVENTING EQUIPMENT PROBLEMS. To help you recognize this information, we use the symbols below. Please read the manual and pay attention to these sections.

LAGUNA



Indicates an imminently hazardous situation which, if not avoided, will result in death or serious injury.



Indicates a potentially hazardous situation which, if not avoided, could result in death or serious injury.



Indicates a potentially hazardous situation which, if not avoided, may result in minor or moderate injury.



Used without the safety alert symbol indicates potentially hazardous situation which, if not avoided, may result in property damage.

GENERAL SAFETY RULES



WARNING FAILURE TO FOLLOW THESE RULES MAY RESULT IN SERIOUS PERSONAL INJURY.

FOR YOUR OWN SAFETY, READ AND UNDERSTAND THE INSTRUCTION MANUAL BEFORE OPERATING THE MACHINE. Learn the unit's application and limitations as well as the specific hazards peculiar to it.

KEEP WORK AREA CLEAN. Cluttered areas and benches invite accidents.

DON'T USE IN DANGEROUS ENVIRONMENT. Do not use this unit in damp or wet locations or expose it to rain. Keep work area well-lighted.

KEEP CHILDREN AND VISITORS AWAY. All children and visitors should be kept a safe distance from work area.

DISCONNECT UNIT before servicing.

CHECK DAMAGED PARTS. Before further use of the unit, properly repair or replace any part that is damaged.

LAGUNA



WARNING

FAILURE TO FOLLOW THESE RULES MAY RESULT IN SERIOUS INJURY.

ADDITIONAL SAFETY FOR DUST COLLECTORS

Intended use. This dust collector is only intended for collecting wood dust and chips from woodworking machines. Do not use this dust collector to collect metal, dirt, pebbles, drywall, asbestos, lead paint, silica, liquids, aerosols, or any flammable, combustible, or hazardous materials.

Hazardous dust. Dust created while using machinery may cause cancer, birth defects, or long-term respiratory damage. Be aware of dust hazards associated with each work piece material, and always wear a NIOSH-approved respirator to reduce your risk.

Dust allergies. Dust from certain woods may cause an allergic reaction in people and animals. Make sure you know what type of wood dust you will be exposed to in case there is a possibility of an allergic reaction.

Wear respirator. Fine dust that is too small to be caught in the filter will be blown into the ambient air during operation. Always wear a NIOSH-approved respirator during operation and for a short time after to reduce your risk of permanent respiratory damage.

Emptying dust. When emptying dust from the collection container, wear a respirator and safety glasses. Empty dust away from ignition sources and into an approved container.

Disconnecting power supply. Turn the switch off, disconnect the dust collector from the power supply, and allow the impeller to come to a complete stop before leaving the machine unattended or doing any service, cleaning, maintenance, or adjustments.

Suspended dust particles and ignition sources. Do not operate the dust collector in areas where explosion risks are high. Areas of high risk include, but are not limited to, areas near pilot lights, open flames, or other ignition sources.

Fire suppression. Only operate the dust collector in locations that contain a fire suppression system or have a fire extinguisher nearby.

Impeller hazards. Do not place your hands or tools near the open inlet during operation for any reason. The powerful suction could easily cause accidental contact with the impeller, which will

LAGUNA

cause serious personal injury or damage to the machine. Always keep small animals and children away from open dust collection inlets.

Avoiding sparks. Do not allow steel or rocks to strike the impeller—this may produce sparks.

Sparks can smolder in wood dust for a long time before a fire is detected. If you accidentally cut

into wood containing tramp metal (nails, staples, spikes, etc.), immediately turn **off** the dust collector, disconnect it from power, and wait for the impeller to stop—then empty the collection container into an approved airtight metal container.

Operating location. To reduce respiratory exposure to fine dust, locate permanently installed dust collectors away from the working area, or in another room that is equipped with a smoke detector. Do not operate the dust collector in rainy or wet locations—exposure to water may create a shock hazard or decrease the life of the machine.

Static electricity. Plastic dust lines generate high amounts of static electricity as dust chips pass through them. Although rare, sparks caused by static electricity can cause explosions or fire. To reduce this risk, make sure all dust lines are thoroughly grounded by using a grounding wire.

Regular cleaning. Regularly check/empty the collection bags or drum to avoid the buildup of fine dust that can increase the risk of fire. Make sure to regularly clean the surrounding area where the machine is operated—excessive dust buildup on overhead lights, heaters, electrical panels, or other heat sources will increase the risk of fire.

CAUTION

This means that if precautions are not heeded, it may result in minor injury and/or possible machine damage.

WARNING

This means that if precautions are not heeded, it may result in serious injury or possibly even death.

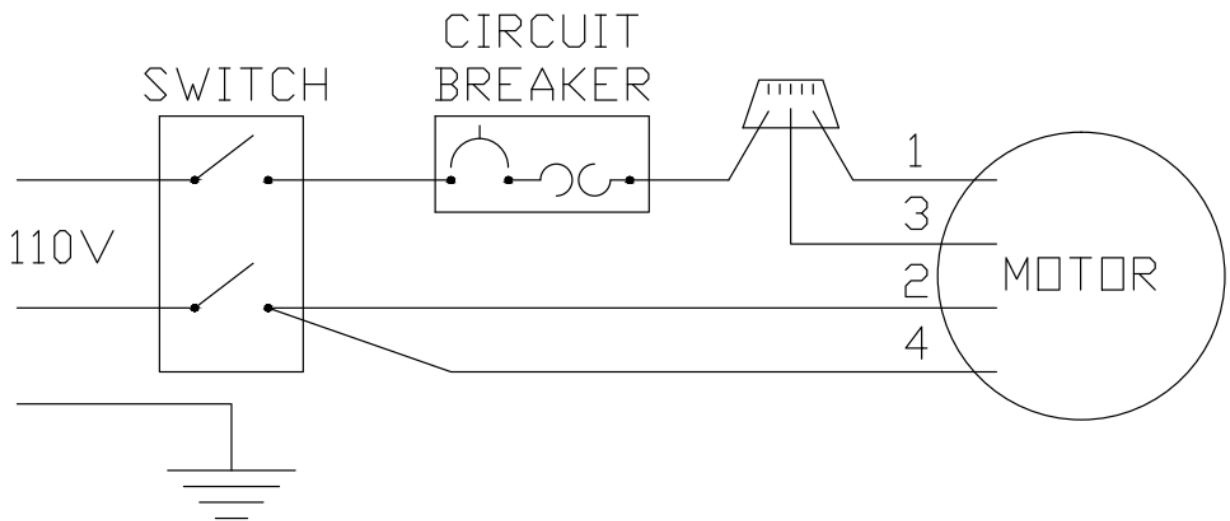
**SAVE THESE INSTRUCTIONS.
Refer to them often and use them to instruct others.**

LAGUNA

POWER CONNECTIONS

A separate electrical circuit should be used for your machines. This circuit should not be less than #12 wire and should be protected with a 15 Amp time lag fuse. If an extension cord is used, use only 3-wire extension cords which have 3-prong grounding type plugs and matching receptacle which will accept the machine's plug. Before connecting the machine to the power line, make sure the switch (s) is in the "OFF" position and be sure that the electric current is of the same characteristics as indicated on the machine. All line connections should make good contact. Running on low voltage will damage the machine.

Do not expose the machine to rain or operate the machine in damp locations.



MOTOR SPECIFICATIONS

⚠ DANGER Your machine is wired for 120V, 60 HZ alternating current. Before connecting the machine to the power source, make sure the switch is in the "OFF" position.

GROUNDING INSTRUCTIONS

⚠ DANGER This machine must be grounded while in use to protect the operator from electric shock.

1. All grounded, cord-connected machines:

In the event of a malfunction or breakdown, grounding provides a path of least resistance for electric current to reduce the risk of electric shock. This

LAGUNA

machine is equipped with an electric cord having an equipment-grounding conductor and a grounding plug. The plug must be plugged into a matching outlet that is properly installed and grounded in accordance with all local codes and ordinances.

Do not modify the plug provided - if it will not fit the outlet, have the proper outlet installed by a qualified electrician. Improper connection of the equipment-grounding conductor can result in risk of electric shock. The conductor with insulation having an outer surface that is green with or without yellow stripes is the equipment-grounding conductor. If repair or replacement of the electric cord or plug is necessary, do not connect the equipment-grounding conductor to a live terminal.

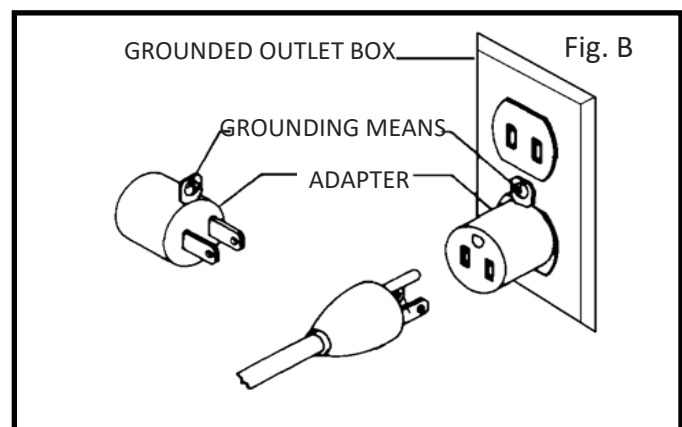
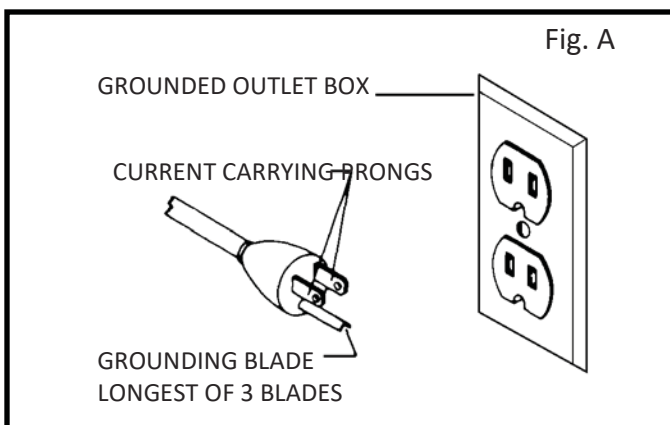
Check with a qualified electrician or service personnel if the grounding instructions are not completely understood, or if in doubt as to whether the machine is properly grounded.

Use only 3-wire extension cords that have 3-prong grounding type plugs and matching 3-conductor receptacles that accept the machine's plug, as shown in Fig. A. Repair or replace damaged or worn cord immediately.

2. Grounded, cord-connected machines intended for use on a supply circuit having a nominal rating less than 150 volts:

If the machine is intended for use on a circuit that has an outlet that looks like the one illustrated in Fig. A, the machine will have a grounding plug that looks like the plug illustrated in Fig. A. A temporary adapter, which looks like the adapter illustrated in Fig. B, may be used to connect this plug to a matching 2-conductor receptacle as shown in Fig. B if a properly grounded outlet is not available. The temporary adapter should be used only until a properly grounded outlet can be installed by a qualified electrician. The green-colored rigid ear, lug, and the like, extending from the adapter is used, it must be held in a place with a metal screw. **NOTE:** In Canada, the use of a temporary adapter is not permitted by the Canadian Electric Code.

⚠ DANGER In all cases, make certain that the receptacle in question is properly grounded. If you are not sure, have a qualified electrician check the receptacle.



EXTENSION CORDS



WARNING Use proper extension cords. Make sure your extension cord is in good condition and is a 3-wire extension cord which has a 3-prong grounding type plug and matching receptacle which will accept the machine's plug. When using an extension cord, be sure to use one heavy enough to carry the current of the machine. An undersized cord will cause a drop in line voltage, resulting in loss of power and overheating. Fig. D.1 or D.2, shows the correct gauge to use depending on the cord length. If in doubt, use the next heavier gauge. The smaller the gauge number, the heavier the cord.

MINIMUM GAUGE EXTENSION CORD RECOMMENDED SIZES FOR USE WITH STATIONARY ELECTRIC MACHINES			
Ampere Rating	Volts	Total Length of Cord in Feet	Gauge of Extension Cord
0-6	120	up to 25	18 AWG
0-6	120	25-50	16 AWG
0-6	120	50-100	16 AWG
0-6	120	100-150	14 AWG
6-10	120	up to 25	18 AWG
6-10	120	25-50	16 AWG
6-10	120	50-100	14 AWG
6-10	120	100-150	12 AWG
10-12	120	up to 25	16 AWG
10-12	120	25-50	16 AWG
10-12	120	50-100	14 AWG
10-12	120	100-150	12 AWG
12-16	120	up to 25	14 AWG
12-16	120	25-50	12 AWG
12-16	120	GREATER THAN 50 FEET NOT RECOMMENDED	

MINIMUM GAUGE EXTENSION CORD RECOMMENDED SIZES FOR USE WITH STATIONARY ELECTRIC MACHINES			
Ampere Rating	Volts	Total Length of Cord in Feet	Gauge of Extension Cord
0-6	240	up to 50	18 AWG
0-6	240	50-100	16 AWG
0-6	240	100-200	16 AWG
0-6	240	200-300	14 AWG
6-10	240	up to 50	18 AWG
6-10	240	50-100	16 AWG
6-10	240	100-200	14 AWG
6-10	240	200-300	12 AWG
10-12	240	up to 50	16 AWG
10-12	240	50-100	16 AWG
10-12	240	100-200	14 AWG
10-12	240	200-300	12 AWG
12-16	240	up to 50	14 AWG
12-16	240	50-100	12 AWG
12-16	240	GREATER THAN 100 FEET NOT RECOMMENDED	



PRODUCT SPECIFICATIONS

Motor Specs:	1 HP
Electrical Specs:	110V / 60Hz / 1PH / 3450 RPM
Running AMP	(with 4" inlet) 8.4A at 110V
Air Volume:	550CFM (cubic feet per minute)
Max. static pressure	4.86 Inches of water
Fan size	9"
Inlet:	Ø4"
Switch	Motor mounted direct switch
Packing Size: (L x W x H)	32.7" x 20.1" x 24.8" (83 x 51 x 63 cm)
Machine weight	71 lbs. (32 kgs)
Shipping weight	77 lbs. (35 kgs)

<u>Filter Media</u>	filtering area: 1.6m ² (17.2 ft ²)
Cartridge Filter	1 Micron Ø14.2" x 11.8" (Ø36 x 30cm) x 1pc

GENERAL TOOL ASSEMBLY

Tools Required

The wrenches supplied in the hardware pack are

(1) 10mm Wrench 

(1) 12mm Wrench 

Phillips's Screwdriver (Not Supplied).

⚠ DANGER **SEVERE LACERATION HAZARD. TURN THE UNIT "OFF," DISCONNECT THE UNIT** from the power source and wait 2-1/2 minutes to allow time for internal rotating components to stop before installing or removing accessories, before adjusting or changing set-ups, clearing clogs or when making repairs. For your own safety, do not connect the machine to the power source until the machine is completely assembled. Please also make sure that you read and understand the entire instruction manual.

ASSEMBLY TIME ESTIMATE 1 hour to 2 hours

CASTERS

1. Locate the bag of hardware with the 1/4" flat washers and 1/4" hex bolts for the four plate mount casters. Each caster requires four of each washer and bolt.



LAGUNA

2. Make sure you have the base in the position with the four bolt holes for each plate mount caster facing upwards to assemble each caster.



3. Place each caster with the plate mount on the base. Take the 1/4" hex bolt and 1/4" washer and insert through the plate mount and thread into the base. Tighten each bolt. Do the same for the other three casters.



SIDE SUPPORTS

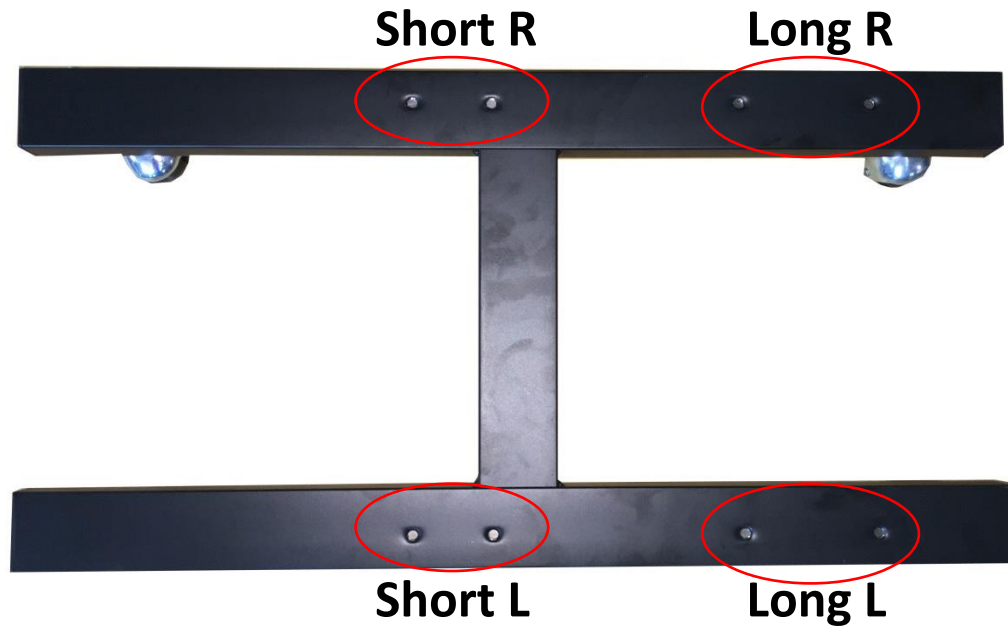
1. Place the base with the casters on the bottom. Make sure you place the side with the two bolt holes on each leg of the base to your right side when looking down on it. See below on positioning; this is important for assembling the correct side support to the corresponding side.



2. Locate the side supports that have been labelled on the inside with "L" and "R."



3. The base below shows where each side support needs to go.

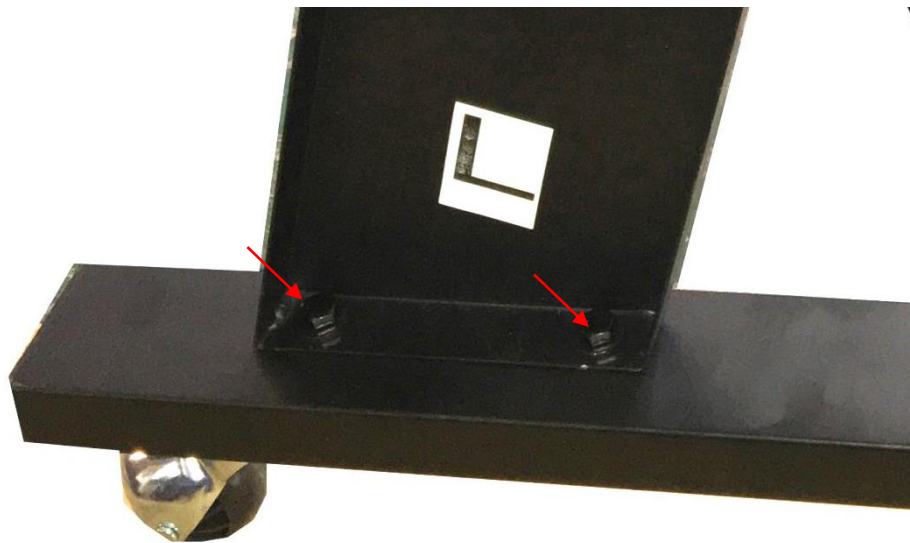


4. Place the Long side support labeled "L" in an upright position with the slant facing inwards towards the middle of the base. The angle of the picture below has been taken on the opposite side to show the label "L."



LAGUNA

5. Align the two holes in the bottom end of the long side support with the two holes in the base. Place a $5/16$ " flat washer onto the $5/16$ "x $3/4$ " hex bolt and insert through each hole in the long side support and base. Tighten the bolt securely.



6. Place the short side support labelled "L" in an upright position with the slant facing long side support.



7. Align the two holes on the top end of the short side support to with the two bolt holes on the middle of the long side support. Place a 5/16" flat washer onto the 5/16"x3/4" hex bolt and insert through each hole in the long side support and short side support. Tighten the bolt securely.
8. Align the two holes on the bottom end of the short side support to the two bolt holes in the base. Place a 5/16" flat washer onto the 5/16"x3/4" hex bolt and insert through each hole in the long side support and short side support. Tighten the bolt securely.



9. Repeat this process for the remaining side supports labelled "R."
10. The figure below shows both side supports assembled.



11. Locate the support brace and place inside the two side supports.
NOTE: MAKE SURE THE SUPPORT IS ATTACHED TO THE SIDE SUPPORTS CLOSEST TO THE MOTOR.



12. Align the four holes in the support brace with the four holes in the side supports as shown below.
13. Place a 5/16" flat washer onto the 5/16"x3/4" hex bolt and insert through the long side supports and support brace. Tighten the bolt securely.



ATTACHING THE MOTOR AND DUST CHUTE TO THE FRAME

1. Place the motor and dust chute on their side.
2. Align the four holes, two shown at C, on the top of the side supports (A) Fig. 3, with the four holes on the dust chute (B).
3. Place a 5/16" flat washer onto a 5/16"x3/4" hex bolt and insert the bolt through the side support and thread bolt into the tapped hole on the dust chute and tighten securely.
4. Repeat this process for the three remaining holes.
5. Carefully lift the assembly up with the wheels on the bottom and dust chute on top.

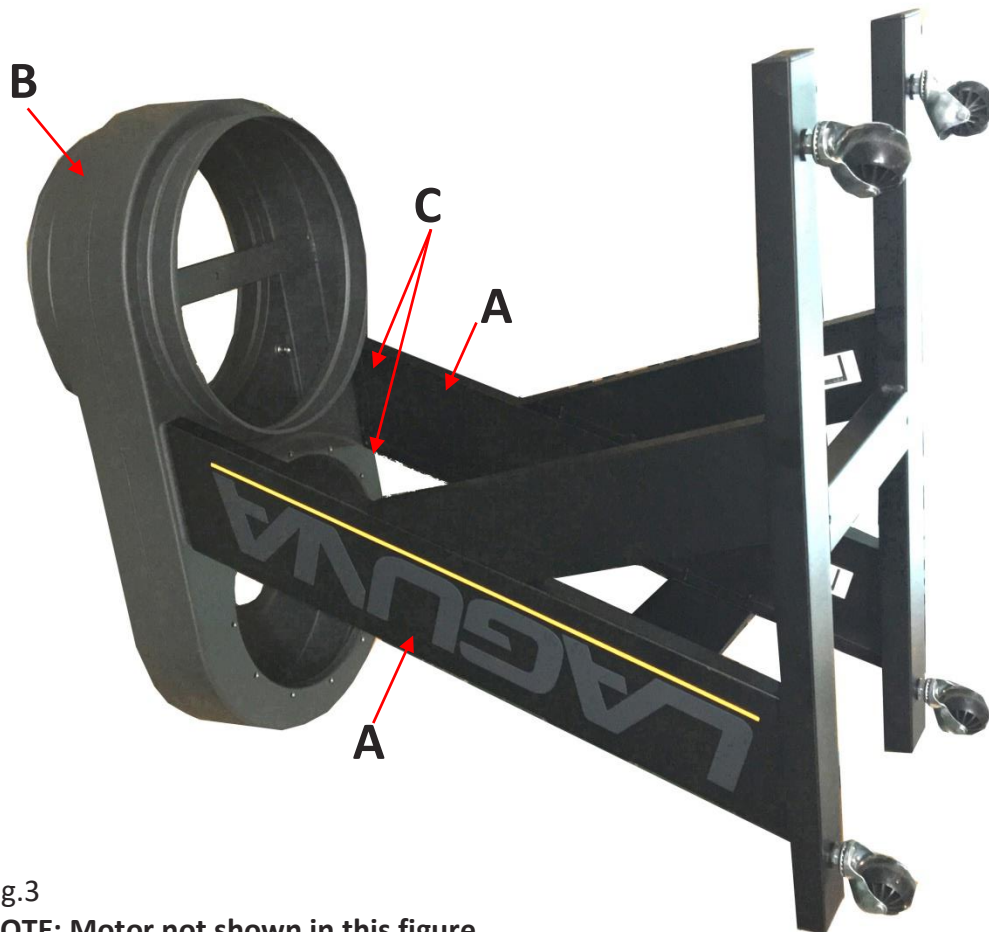


Fig.3

NOTE: Motor not shown in this figure.

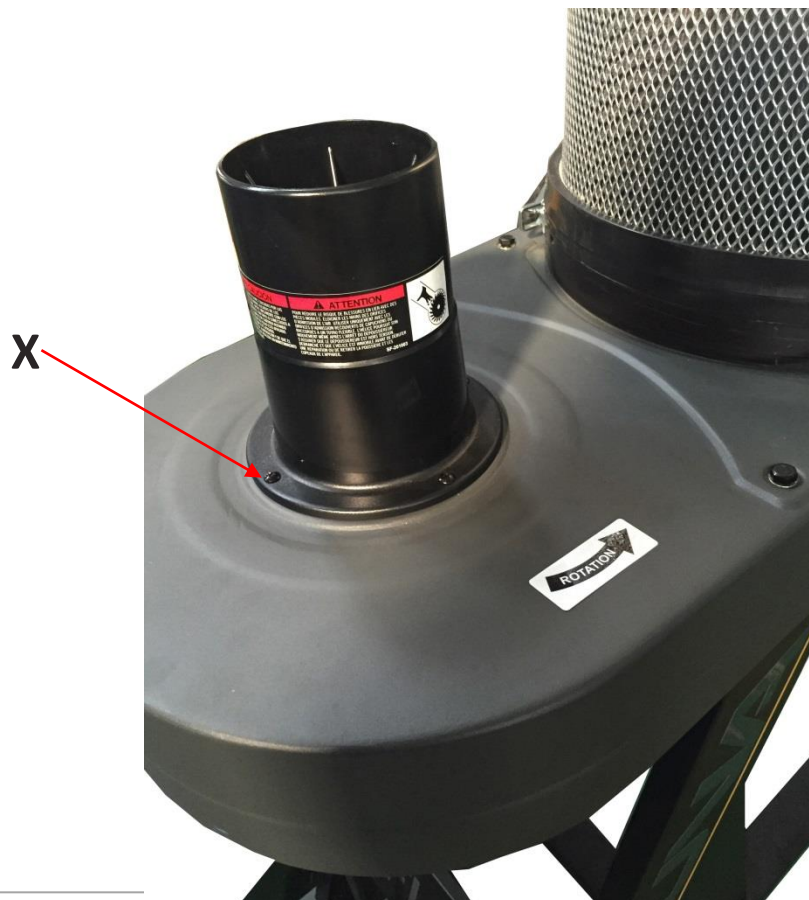
INTAKE ADAPTER TO THE DUST CHUTE

1. Line up four holes in the intake adapter (one shown as X) Fig.4 with four holes in the dust chute.
2. Use the included #8 x 1/2" countersunk screws, fasten the intake adapter to the dust chute.

⚠ DANGER

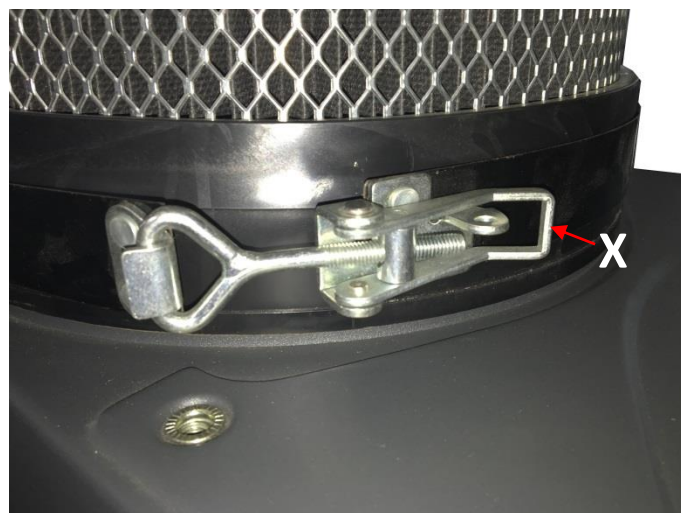
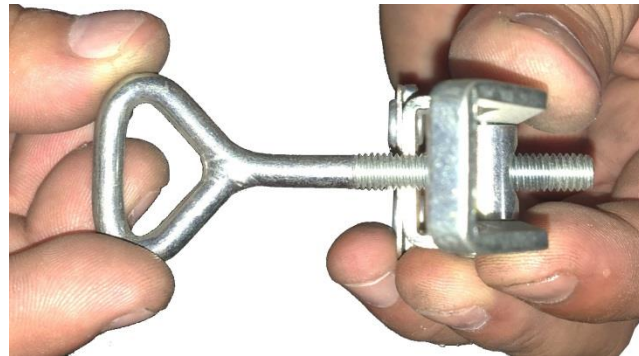
SEVERE LACERATION HAZARD. TURN THE UNIT "OFF," Disconnect the UNIT from the power source and wait 2-1/2 minutes to allow time for internal rotating components to stop before installing or removing accessories, before adjusting or changing set-ups, clearing clogs or when making repairs. The dust collector is not supplied with a 4" wide flexible dust intake hose. Please assemble your own 4" wide flex hose to the intake adapter and secure with a hose clamp. Assemble the other end of the flexible hose and to the woodworking machine and secure with a hose clamp.

IMPORTANT: Do not operate the dust collector without the flexible hose assembled to the intake adapter.



CANISTER FILTER TO CHUTE

1. Take the canister filter and fit the open end to the top channel on the dust chute.
2. Locate the adjustable band clamp from the hardware and take the end with the clamp and key bolt. Adjust the length of the band clamp by tightening or loosening the key bolt.
3. Secure adjustable band clamp around the bottom end of the canister filter.
4. Hook the key bolt onto the other end of the clamp and push the handle (one shown as A) down to secure tightly.



COLLECTION BAGS TO CHUTE

⚠ WARNING DISCONNECT THE MACHINE FROM THE POWER SOURCE!

USING THE CLOTH SNAP BAND RING:

1. Place the cloth-covered snap band ring (A) Fig. 5 inside the opening of the clear plastic collection bag. Fold about 6 inches of the bag around the snap band ring.
2. Place the bag in the large opening (B) Fig. 6 in the dust chute. Fit the snap band ring into the bottom channel (B) Fig.6. Bend and fold the snap band ring to fit it into place.
3. Tug slight on the bag to eliminate any slack and make sure that the bag is secure and will not detach during collection.



USING A METAL BAG CLAMP:

You can also attach the plastic bag to the outside of the dust collector using the included metal bag clamp (B) Fig. 7.

1. Place the metal bag clamp (B) around the top of the plastic bag (A). Fold about 4 to 6 inches of plastic bag over the clamp (Fig. 7).
2. Place the metal bag clamp and plastic bag (A) Fig. 8 on the dust chute. Fasten the metal bag clamp (B) securely.



CLEANING THE FILTER

To ensure proper operation of this Dust Cyclone, the canister filter must have adequate air flow. This means the filter must be regularly maintained by carefully blowing the filter clean using compressed air and an air gun to release built-up particulates trapped between the filter pleats.

For heavy duty users, it is recommended to use compressed air on a regular basis to maintain maximum filtration efficiency and longer life span of the filter.

Using the Filter Cleaner Crank

The filter cleaner crank knocks dust particulate and small debris from the pleated filter and into the filter bag.

To keep your machine in good working condition, it is recommended that you use the filter cleaner crank to clean the filter after every use.

To clean the filter using the crank simply rotate the crank handle clockwise four or five rotations.

Using Compressed Air



DISCONNECT MACHINE FROM POWER!

For heavy duty users, it is recommended to use compressed air on a weekly basis to maintain maximum filtration efficiency and longer life span of the filter.

ROUTINE INSPECTION

It is a good idea to routinely inspect any quality woodworking tool in order to keep it in optimum condition. This includes inspecting all hardware for tightness, ensuring the filter is clean, and cleaning debris and grime from any surfaces and moving parts.

TROUBLESHOOTING GUIDE

Symptom	Possible Cause	Possible Solution
Machine does not start or a breaker trips.	Power supply switched OFF or is faulty.	Ensure power supply is ON and has the correct voltage.
	Wall fuse/circuit breaker is blown/tripped.	Ensure adequate circuit size; install inlet restrictor, replace weak breaker.
	Incorrectly wired motor connection.	Rewire or call certified service technician or electrician.
	On-board circuit breaker is tripped.	Allow motor to cool, improve ventilation, press reset button.
	Wiring is open/has high resistance.	Check for broken wires or poor connections, repair, as necessary.
	Faulty power switch.	Replace switch.
	Motor is at fault.	Test/repair/replace.
Excessive vibration or noise during operation.	Loose component.	Inspect and tighten all bolts/nuts.
	Loose or broken motor mount.	Tighten or replace as needed.
	Motor fan hitting fan cover.	Check fan and cover; replace as needed.
	Bad motor bearings.	Rotate shaft manually, check for grinding or loose shaft, replace bearings if needed.
Loud, repetitive noise, or excessive vibration coming from cyclone	Machine is on uneven surface.	Stabilize on a flat surface.
	Damaged/Unbalanced impeller.	Inspect impeller for dents, bends, loose fins. Replace if needed.
	Loose connections.	Check and re-tighten all fasteners.

LAGUNA

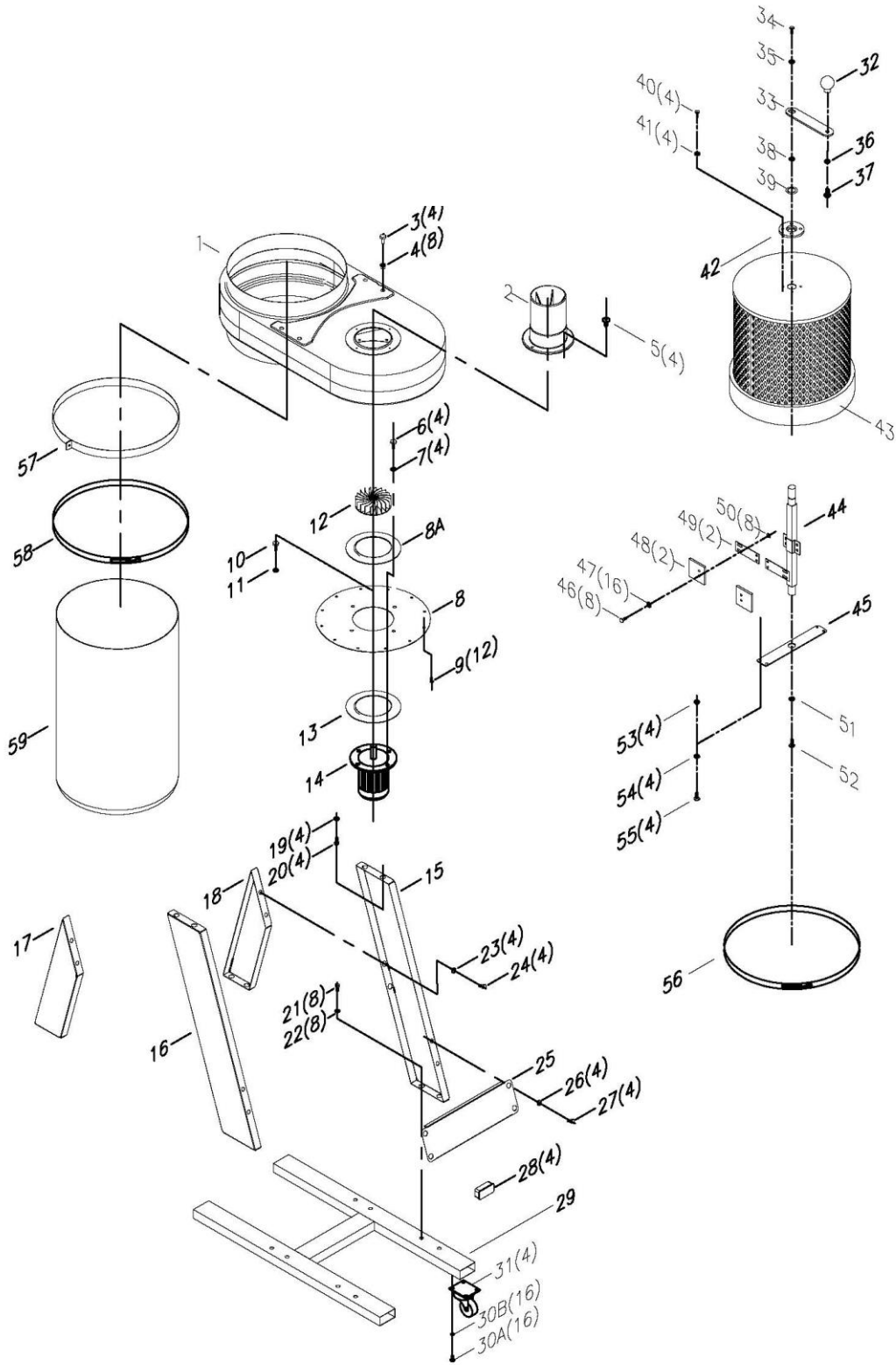
	<p>Impeller is loose.</p> <p>Motor fan hitting fan cover.</p>	<p>Replace the motor and impeller.</p> <p>Check fan and cover; replace as needed.</p>
--	---	---

<p>Dust collector does not adequately collect dust or chips, poor performance.</p>	<p>Canister end bag is full.</p>	<p>Empty canister end bag.</p>
	<p>Filter is dirty.</p>	<p>Clean filter.</p>
	<p>Restricted duct line.</p>	<p>Clean inlet adapter.</p>
	<p>Suction route is too long or has too many sharp bends.</p>	<p>Move machine closer to the point of suction, and rerun ducts to eliminate sharp bends.</p>
	<p>Wet lumber is clogging ducts.</p>	<p>Use lumber with less than 20% moisture content.</p>
	<p>Leaks in the duct work or too many open ports.</p>	<p>Repair all duct leaks and close any ports not being used.</p>
	<p>Inadequate velocity in the main suction line.</p>	<p>Increase velocity by opening 1 or 2 more blast gates to different branch lines.</p>
	<p>Wrong size ducting/ports used.</p>	<p>Re-size and re-install ducts and fittings.</p>
<p>Sawdust being blown into the air from the dust collector</p>	<p>Band clamp or end bag is not secure.</p>	<p>Re-install ensuring a tight fit.</p>
	<p>Loose or damaged seals.</p>	<p>Replace seals and gaskets.</p>



Parts Breakdown

LAGUNA



Part List

Ref No	Part Name	Description	Q'TY
--------	-----------	-------------	------

LAGUNA

1	DUST CHUTE		1
2	INTAKE SPLITTER	4"	1
3	HEX BOLT	5/16"*3/4"	4
4	NUT	5/16"	8
5	SHEET METAL THREAD BOLT	#8x1/2"	4
6	HEX BOLT	5/16"*3/4"	4
7	FLAT WASHER	5/16"*OD18*2t	4
8	MOTOR BASE SUPPORT		1
8A	GASKET		1
9	HEX SPRING BOLT	5/16"*5/8"	12
10	HEX BOLT	5/16"*3/4"	1
11	FLAT WASHER	5/16"*OD30*3t	1
12	FAN	9"	1
13	MOTOR RUBBER GASKET		1
14	MOTOR	1HP/110V/60HZ/1PHASE	1
15	SIDE SUPPORT – LONG	Right	1
16	SIDE SUPPORT – LONG	Left	1
17	SIDE SUPPORT – SHORT	Left	1
18	SIDE SUPPORT – SHORT	Right	1
19	FLAT WASHER	5/16"*OD18*2t	4
20	HEX BOLT	5/16"*3/4"	4
21	HEX BOLT	5/16"*3/4"	8
22	FLAT WASHER	5/16"*OD18*2t	8
23	FLAT WASHER	5/16"*OD18*2t	4
24	HEX BOLT	5/16"*3/4"	4
25	SUPPORT BRACE		1
26	FLAT WASHER	5/16"*OD18*2t	4
27	HEX BOLT	5/16"*3/4"	4
28	PLUG	30*60mm	4
29	BASE		4
30A	HEX BOLT	1/4"	16
30B	FLAT WASHER	1/4"	16
31	PLATE MOUNT CASTER/WHEEL	2" PP2	4
32	HANDLE	22mmL	1
33	ROTATION ARM		1
34	HEX BOLT	5/16"*3/4"	1
35	FLAT WASHER	5/16"*OD30*3t	1
36	FLAT WASHER	3/8"*OD23*2t	1
37	LOCK NUT	3/8"	1
38	C-SHAPED CLAMP	Ø20	1
39	SEAL	OuterØ30*Inner Ø20*5t	1
Ref No	Part Name	Description	Q'TY
40	HEX BOLT	1/4"*3/4"	4

LAGUNA

41	FLAT WASHER	1/4"*OD19*2t	4
42	BEARING	Ø70* Ø20.5*7t	1
43	CANISTER FILTER	Ø350*300mm	1
44	ROTATION SHAFT		1
45	SUPPPORT PLATE		1
46	HEX BOLT	1/4"*5/8"	8
47	FLAT WASHER	1/4"*OD13*1t	16
48	CANVAS		2
49	PEDAL		2
50	LOCK NUT	1/4"	8
51	FLAT WASHER	5/16"*OD23*2t	1
52	HEX BOLT	5/16"*3/4"	1
53	LOCK NUT	1/4"	4
54	FLAT WASHER	1/4"*OD13*1t	4
55	HEX BOLT	1/4"*3/4"	4
56	ADJUSTABLE BAND CLAMP	Ø350mm	1
57	BLACK SNAP BAND	Ø350mm	1
58	SPRING BAG CLAMP	Ø350mm	1
59	PLASTIC BAG	Ø350mm*980mm	2

Hardware Pack for BFLUX1				
Ref No.	Description	Qty.	Total Qty.	Area Used.
20	HEX BOLT 5/16"*3/4"	4	20	Used on upright stands
21	HEX BOLT 5/16"*3/4"	8		
24	HEX BOLT 5/16"*3/4"	4		
27	HEX BOLT 5/16"*3/4"	4		
19	FLAT WASHER 5/16"*OD18*2t	4	20	
22	FLAT WASHER 5/16"*OD18*2t	8		
23	FLAT WASHER 5/16"*OD18*2t	4		
26	FLAT WASHER 5/16"*OD18*2t	4		
31	PLATE MOUNT CASTER/WHEEL 2"	4	4	Used on casters
30A	HEX BOLT 1/4"*5/8"	16	16	
30B	FLAT WASHER 1/4"*OD13*1t	16	16	
5	SHEET METAL THREAD BOLT #8x1/2"	4	4	Used on canister filter
35	FLAT WASHER 5/16"*OD30*3t	1	1	Used on canister filter handle
34	HEX BOLT 5/16"*3/4"	1	1	
*	OPEN END WRENCH #12	1	1	Used for upright stand assembly
*	OPEN END WRENCH #10	1	1	Used for caster assembly
32	HANDLE 22mmL	1	1	Used on canister filter handle
33	ROTATION ARM	1	1	
36	FLAT WASHER 3/8"*OD23*2t	1	1	
37	LOCK NUT 3/8"	1	1	

LAGUNA



LAGUNA TOOLS
2072 Alton Parkway
Irvine, California 92606
Ph: 800.234.1976
www.lagunatools.com