



BRILLIANCE™

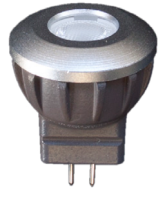
A HIGHER LIGHT FORM®



WILDLIFE CERTIFIED LIGHTING



MICRO G4



MR8



MR11



AR11



MR16



PAR36

Wattage	1.2W	1.5W	2W	2W	4W	5W	7W	11W
Volt Amps	1.52	2.5	3.33	3.33	6.35	8.33	10.77	15.94
Beam Spread	Omni	30°	30°	30°	30°		30°	
Operating Range	8-14 VAC/DC	8-25 VAC/DC	8-25 VAC/DC	8-25 VAC/DC	8-25 VAC/DC		8-25 VAC/DC	
CRI	85	85	85	85	85		85	
IP	65	61	61	61	61		68	
Lamp Life	35,000	50,000	50,000	50,000	50,000		50,000	
Warranty	5	5	5	5	5		5	

Certification Information Certification Number: 2018-036 | Category: Certified Bulb
Certification Requirements: Must be installed in a low mounted, downward directed and shielded fixture.

	Metal Works Fixture	Certification Info	Certification Requirements
	Sequoia Path Light <i>Brass, Copper, or Brass+Black (Cerakote®)</i>	2019-268 Category: Certified Walkway Lighting	Amber LED. Must be downward directed. Maximum mounting height of 24" from the ground. Additional shielding may be necessary if visible from the beach.
	Zion Path Light <i>Brass, Copper, or Brass+Black (Cerakote®)</i>	2019-267 Category: Certified Walkway Lighting	Amber LED. Must be downward directed. Maximum mounting height of 24" from the ground. Additional shielding may be necessary if visible from the beach.
	Bryce Hanging Down Light <i>Brass, Copper, or Brass+Black (Cerakote®)</i>	2019-269 Category: Certified Ceiling Mount Fixtures	Amber LED. Must be installed below structures. Allowed on the ground floor only, unless on the landward side of the structure. Additional shielding may be necessary if visible from the beach.

WILDLIFE CERTIFIED INTEGRATED LIGHTS









STRIP LIGHT



LIGHT BAR

Wattage	1.8 per meter	1.5W	2.5W
Volt Amps	3.00 per foot	1.67	2.78
Length	82.25 ft reel	5.125"	9.0"
Operating Range	8-16 VAC/DC	8-15 VAC	
CRI	80	85	
IP	65	65	
Lamp Life (hrs)	35,000	30,000	
Warranty (yrs)	3	5	
Certification Information	<p>Certification Numbers: Strip Light - 2018-036 Light Bar - 2019-270 Category: Tape/Bullet LED Lights Certification Requirements: Must be installed with the approved integrated Amber LED. Must be installed in a low, shielded location and directing the light downward and away from the beach. If the Light Bar is used in a fixture, the fixture must meet the FWC Lighting Guidelines for the appropriate fixture type.</p>		

FIXTURES UNDER REVIEW

	Metal Works Fixture	Status	Light Source
	<p>Redwood Path Light <i>Brass, Copper, Brass+Black (Cerakote®), or Brass+Black (Cerakote®) w/ Brass Top</i></p>	<p>Under Review Light Source Approved Under Certification Number 2018-036</p>	Micro G4 Amber
	<p>Everglades Area Light <i>Brass or Brass+Black (Cerakote®)</i></p>	<p>Under Review Light Source Approved Under Certification Number 2018-036</p>	Micro G4 Amber
	<p>Surface Mount Wall Wash <i>Brass, Copper, or Brass+Black (Cerakote®)</i></p>	<p>Under Review Light Source Approved Under Certification Number 2019-270</p>	Integrated into Fixture
	<p>Tee Wall Washer <i>Brass, Copper, or Brass+Black (Cerakote®)</i></p>	<p>Under Review Light Source Approved Under Certification Number 2019-270</p>	Integrated into Fixture
	<p>Mini Beam + Stake & Shield 1.5W 90 Lumens <i>36°, CRI 90, IP68, 8-15VAC, 3 year warranty, 2.50VA 30,000 hrs</i></p>	<p>Under Review</p>	Integrated into Fixture
	<p>Adjustable AquaBeam <i>MR16 4W: 6.35 VA, MR16 5W: 8.33VA, CRI 85, IP68, 8-25VAC, 5 year warranty, 50,000 hours</i></p>	<p>Under Review Light Source Approved Under Certification Number 2018-03</p>	MR16 Amber