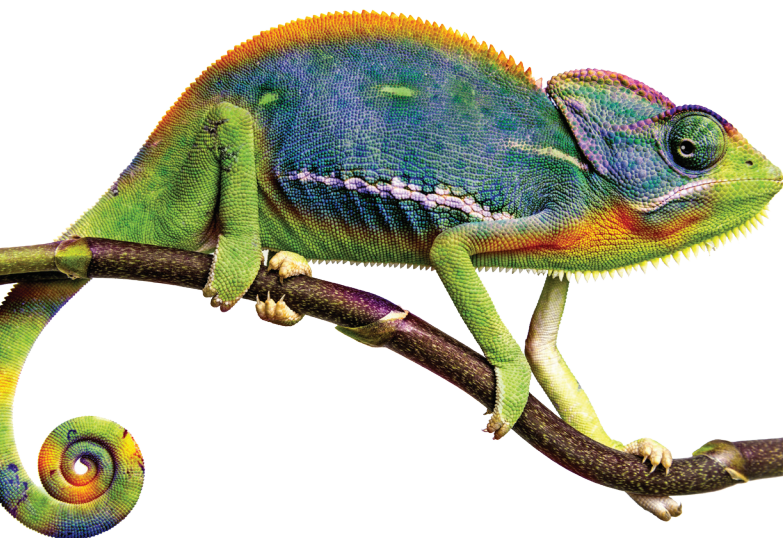


RGBW LAMPS + CONTROLS

SMART PRODUCTS



G4



2.5 Watts
190-250 Lumens
RGBW



MR16



6 Watts
328-441 Lumens
RGBW



PAR36



9 Watts
442-686 Lumens
RGBW

TECHNICAL REQUIREMENTS: All Chameleon lamps must have consistent 2.4 GHz Wi-Fi signal at the installation location with dBm strength of -70 or better. See the Brilliance Smart Products Guide for more information and troubleshooting.

SMART SOCKET 3.0

- NEW! Antenna promotes improved Wi-Fi
- Control lighting from Brilliance Smart app
- Pair with transformer for astronomical timing
- Android + iOS compatible, and ETL Listed



Intertek
5025307

LOW VOLTAGE DIMMER

- Control dimming
- 10 Amp capacity
- No minimum load
- Up to 120 watts



MADE IN AMERICA



TECHNICAL REQUIREMENTS: Must have consistent 2.4 GHz Wi-Fi signal at the installation location with dBm strength of -70 or better. See the Brilliance Smart Products Guide for more information and troubleshooting. Must be placed in landscape lighting transformer or in a covered receptacle box.

TECHNICAL REQUIREMENTS: Always use the supplied gasket to protect against water ingress. In applications where the environment can be extremely wet, we recommend using a cover to protect against water ingress.



Brilliance | brillianceled.com | 800.867.2108