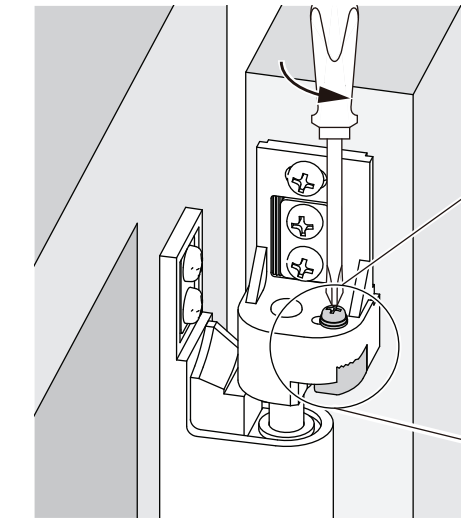
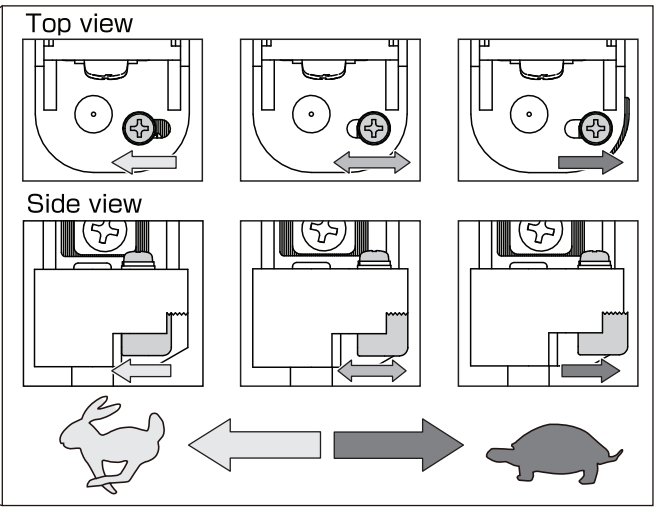


■ Adjustment of closing speed

1 Loosen the adjustment screw.



2 Move the adjustment screw.



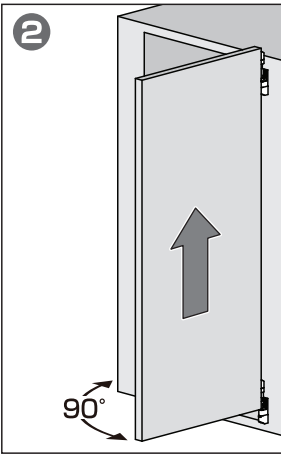
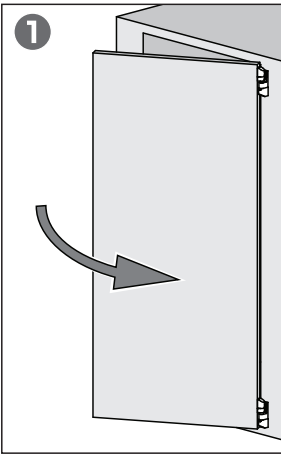
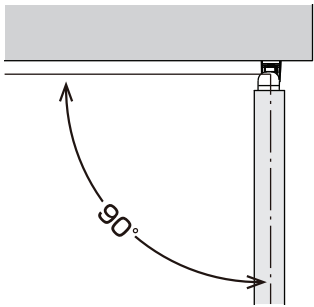
⚠ CAUTION

Be sure to fasten the adjustment screw securely after the adjustment.

REMOVAL

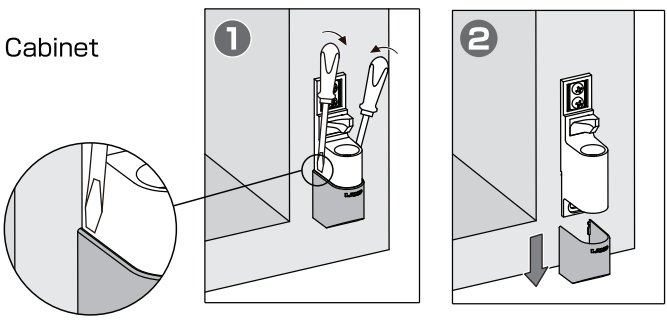
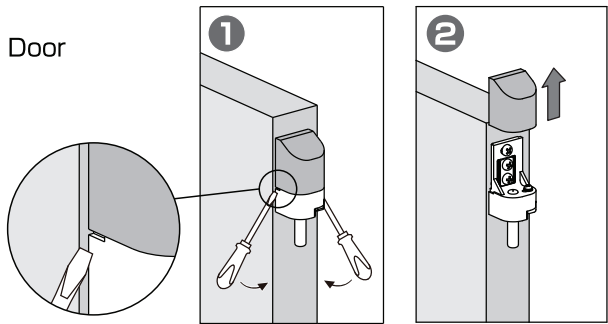
■ Removal door

Remove the door at 90° opened.



■ Removal cover

The work should be done with the door removed.



Sugatsune America
18101 Savarona Way,
Carson, CA 90746

sugatsune.com

Gravity Hinge
with Soft-Close

HG-JG150

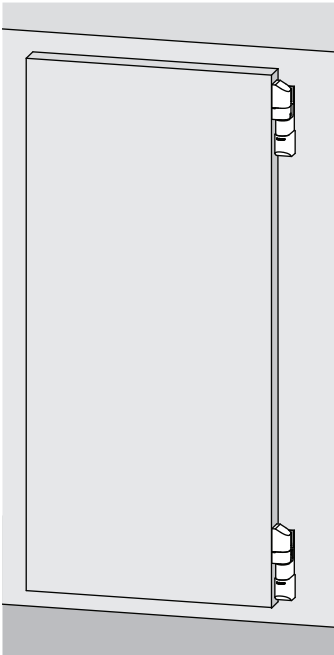


Installation instructions



Thank you for using our product. Before installation, please read this manual thoroughly to ensure correct installation. Please keep this manual at hand for future reference.

Video link

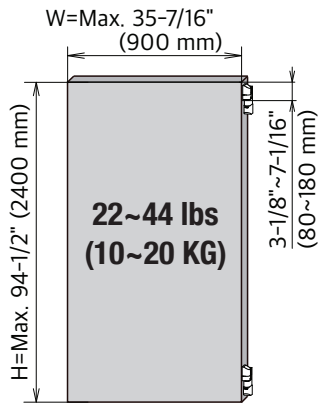


ABOUT THE PRODUCT

● This product is a gravity hinge with a soft-close function.

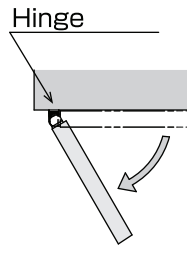
SPECIFICATION

■ Door size

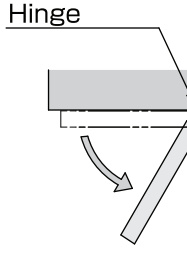


■ Opening direction

Left opening
⇒HG-JG150L



Right opening
⇒HG-JG150R



Recommended H:W = 2:1

■ Operating temperature 32°F ~ 104°F (0°C ~ 40°C)

⚠ CAUTION

Use a door that is straight. A warped door may not close completely.

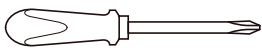
FOR YOUR SAFETY AND CORRECT INSTALLATION

Meaning of symbols

⚠ Warning Caution	⊘ Prohibited	! Required
----------------------	--------------	------------

■ Tools needed

phillips screwdriver : # 2



flathead screwdriver

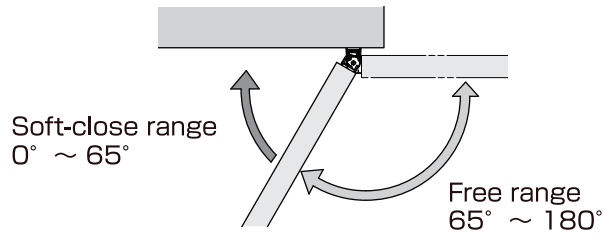


⚠ If not followed, injury or damage may result.

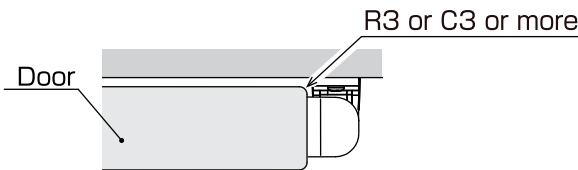
- ❗ Follow the specified dimensions, specifications, and alignment of the cabinet. Warping, tilting or twisting of the cabinet or door may cause failure.
- ❗ Provide a cabinet that can withstand the weight and impact of opening and closing the door. Be sure to use the specified screws and tighten them securely. If the mounting strength is insufficient, the door may fall and cause injury.
- ❗ Make sure to check the screws for slack at regular intervals (one month from first usage, half a year, and then one time every year is recommended).

Soft-close RANGE

DOOR FORME



Recommended



PARTS LIST

The below shows HG-JG150R. HG-JG150L is a mirror image.

Door	Cabinet	Door	Cabinet	Door	Cabinet	
D-R	D	C-R	C	x2	x2	x4
Upper Hinge		Lower Hinge		Cover		Adjustment Plate

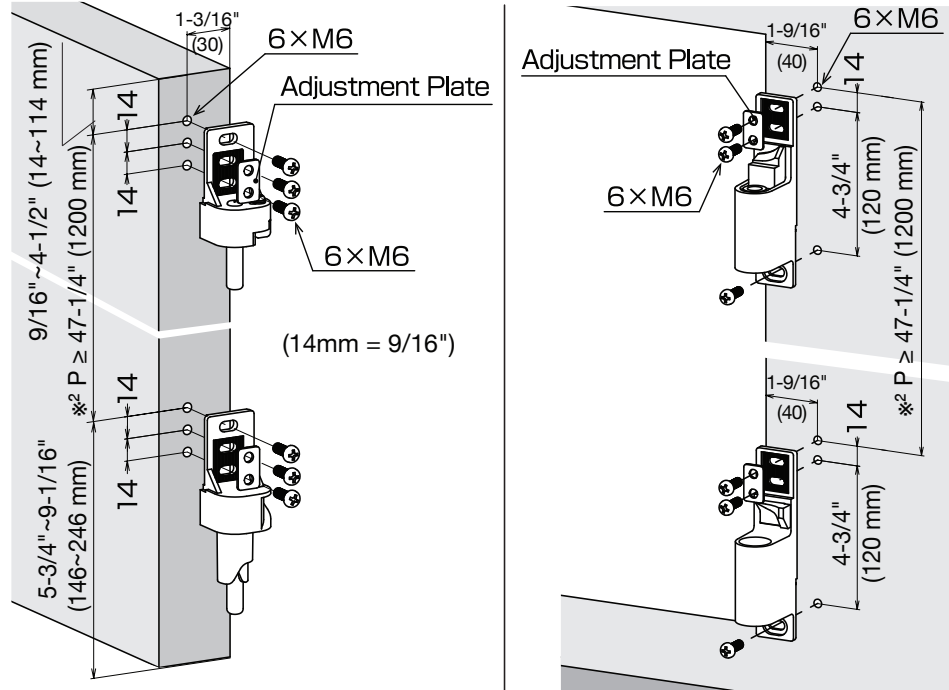
※¹ Marked as "L" for HG-JG150L

Recommended screws

- Bind head screw M6
- Pan head screw M6
- Hexagon socket head cap screw M6
- Hexagon socket button head screw M6

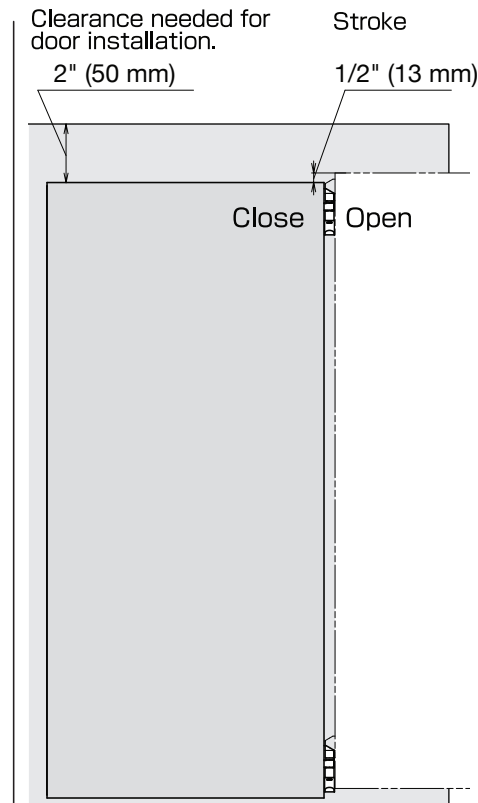
INSTALLATION

1 Hinge installation



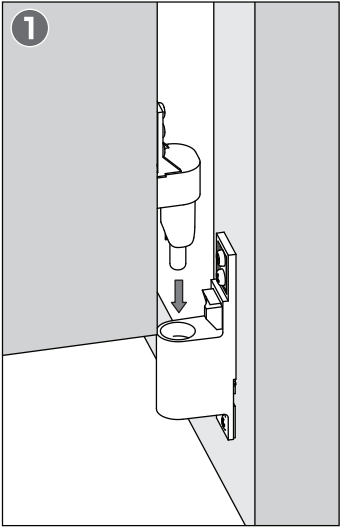
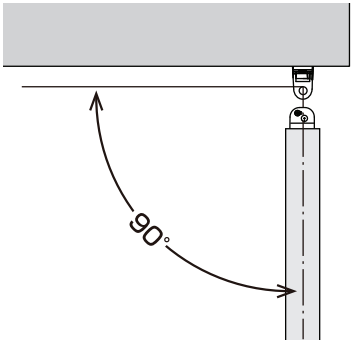
CAUTION

※² Dimension P on the door and the cabinet must be the same.
If not, the door may not fully close or the damper may not work properly.

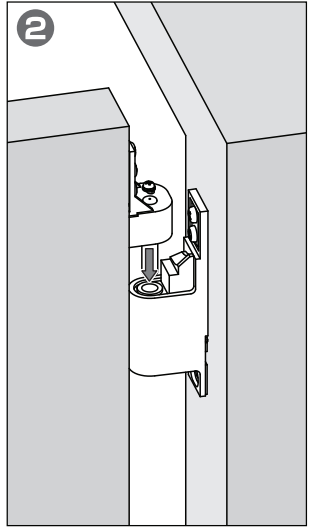


2 Hanging door

Hang the door at 90° position.



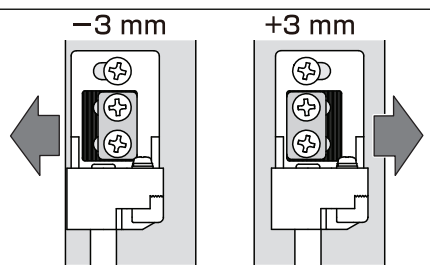
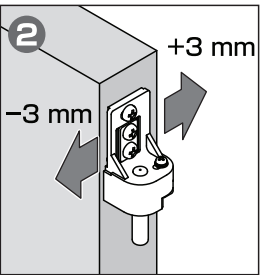
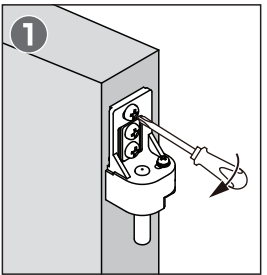
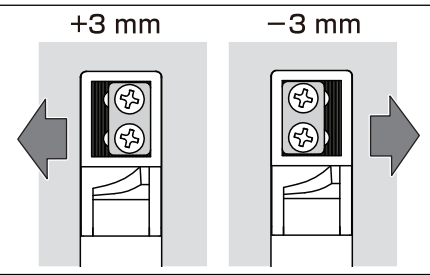
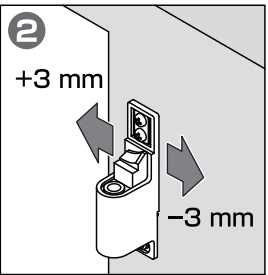
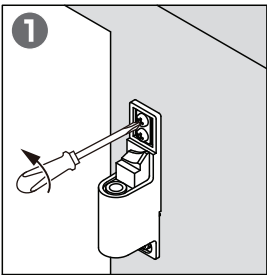
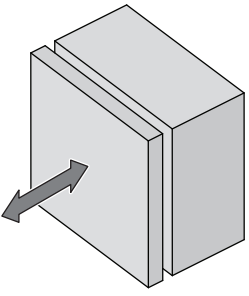
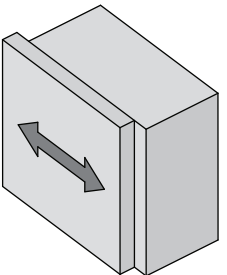
Lower Hinge



Upper Hinge

Door adjustment (±3 mm)

The work should be done with the door removed.

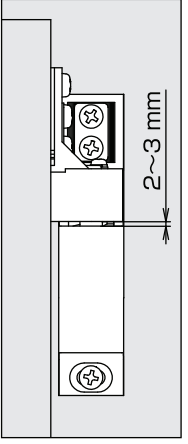


CAUTION

Be sure to fasten the screws securely.

Checking the gap on the hinge

Upper Hinge



Check the gap if it is 2 - 3 mm.
If not, the door may not fully close or the damper may not work properly.

Install cover

