

CLIP top BLUMOTION



CLIP top BLUMOTION

Premium concealed hinges with integrated BLUMOTION

www.blum.com

Perfecting motion  **blum**[®]



Silent and effortless, that's how cabinet doors close with CLIP top BLUMOTION hinges — regardless of the weight or closing speed. The new BLUMOTION soft close mechanism is integrated in the hinge cup, and continues to provide the quality of motion you have come to expect from Blum hardware.



New geometry

CLIP top BLUMOTION 110 hinges have a new pivot point allowing the use of thicker doors, up to 1". This new geometry ensures that the door does not make contact with the cabinet face even with smaller door gaps.



Deactivation option

The BLUMOTION function can easily be deactivated on one of the hinges, giving small or light doors the same high quality of motion.



Compatible with current mounting plates

CLIP top BLUMOTION hinges work with all current CLIP mounting plates so you can start using this new hinge right away.

A complete program



Standard 110° hinges

Blum's new premium hinge with all the best features from over 40 years of hinge development. Available in all three crankings and various insertion methods.



Standard 110°+ hinges for greater overlay

Blum's new 110°+ hinge offers the same features as the standard 110 and adds the ability to achieve a larger overlay. Available in straight arm hinges only.



95° thick door hinges

These CLIP top BLUMOTION hinges are specially designed to work with thicker doors (up to 1-3/16"). Available in all three crankings and various insertion methods. **Available Winter 2010**



Inset blind corner hinges

CLIP top BLUMOTION hinges for inset blind corner cabinet applications. Available in various insertion methods. **Available Winter 2010**



Angled hinges

Blum's complete angled hinge program from -45° to +45°, in 5° increments. Available in INSERTA versions only. **Available Winter 2010**



Narrow aluminum door hinges

A CLIP top BLUMOTION hinge with a special cup for use with narrow aluminum frame doors. **Available Winter 2010**



Important information

CLIP top BLUMOTION is designed to be used at temperatures between 65° and 85° F. Lower or higher temperatures will not cause damage to the hinge, however they will affect the closing speed. Once the temperature returns to the suggested range the hinge will return to its optimal closing action.



Features

- BLUMOTION integrated into the hinge cup
- New geometry for door thicknesses up to 26 (1")
- New INSERTA design
- Boring distance range 3 — 7 mm
- Press-in hinges must be inserted with knock-in tool or universal insertion ram

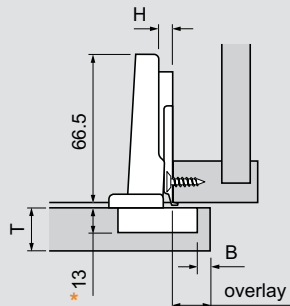


Minimum reveal table						
3	0.5	1.0	1.8	2.7	4.3	
4	0.5	1.0	1.7	2.5	3.8	
5	0.5	0.9	1.7	2.4	3.4	
6	0.5	0.9	1.6	2.3	3.2	
7	0.5	0.9	1.6	2.2	3.0	
B = boring dist.	16	19	22	24	26	T = door thickness

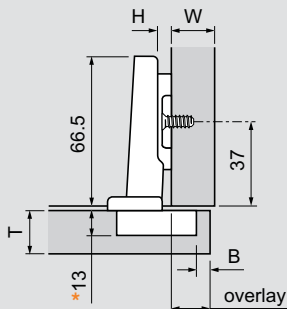
Thickness greater than 26 trial app. recommended

Overlay

Frame

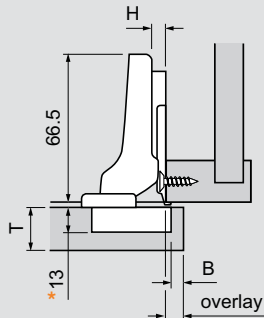


Panel

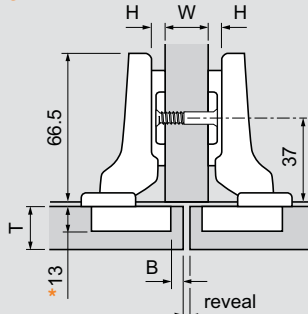


Partial/twin overlay

Frame

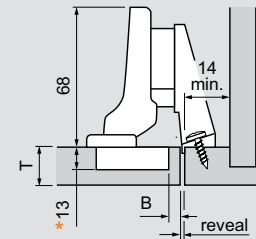


Panel



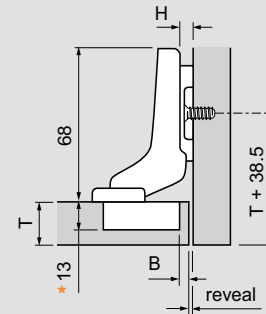
Inset

Frame



NOTE: For this application use a half-cranked hinge and mounting plate 175H5030.21

Panel



* All 35 mm and 8 mm holes must be a minimum of 13 mm deep

H	Overlay						P	S
0	14	15	16	17	18	12	21.5	
3	11	12	13	14	15	15	24.5	
4.5	9.5	10.5	11.5	12.5	13.5	16.5	26	
6	8	9	10	11	12	18	27.5	
9	5	6	7	8	9	21	30.5	
	3	4	5	6	7	Fixed dist.	X = 11	
	B = boring distance							


NOTE: 4.5 plate is only for use in frame cabinets, 9 plate is only for panel cabinets


H	Overlay					P	S
0	4.5	5.5	6.5	7.5	8.5	21.5	31
	3	4	5	6	7	Fixed dist.	X = 1.5
	B = boring distance						

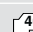
H	Reveal					P	S
0	4	3	2	1	—	30	39.5
	3	4	5	6	7	Fixed dist.	X = -7
	B = boring distance						

H	Reveal				W	P	S
	7	5	3	1	—	16	
0	10	8	6	4	2	19	21.5 31
	13	11	9	7	5	22	
	3	4	5	6	7		
	B = boring distance						

Abbreviations	
H	= Plate height
P	= Door protrusion
S	= Side arm protrusion
W	= Side panel width
X	= Fixed distance

Straight-arm	Self close
Screw-on	71B3550
Press-in 	71B3580
EXPANDO	71B358E
INSERTA	71B3590

Half-cranked (9.5 mm)	Self close
Screw-on	71B3650
Press-in 	71B3680
INSERTA	71B3690

Full-cranked (18 mm)	Self close
Screw-on	71B3750
Press-in 	71B3780
INSERTA	71B3790



Features

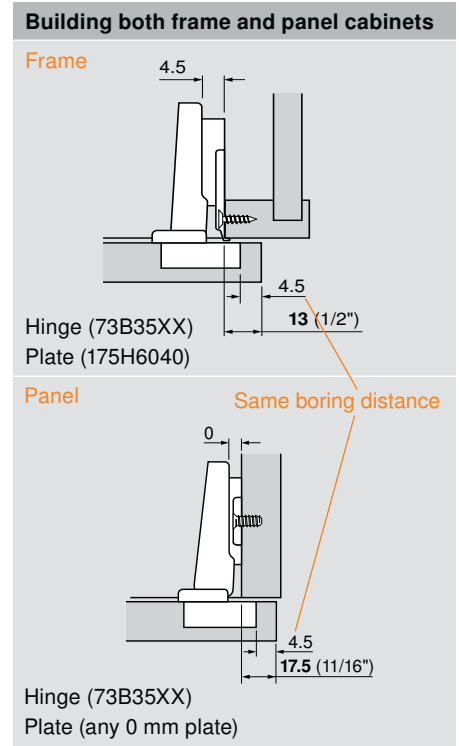
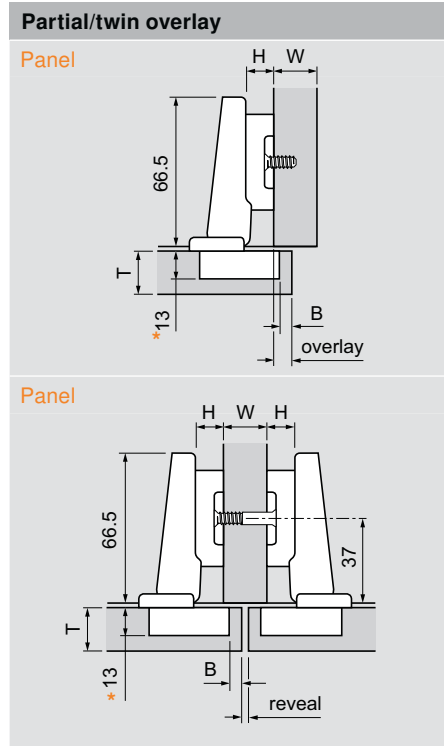
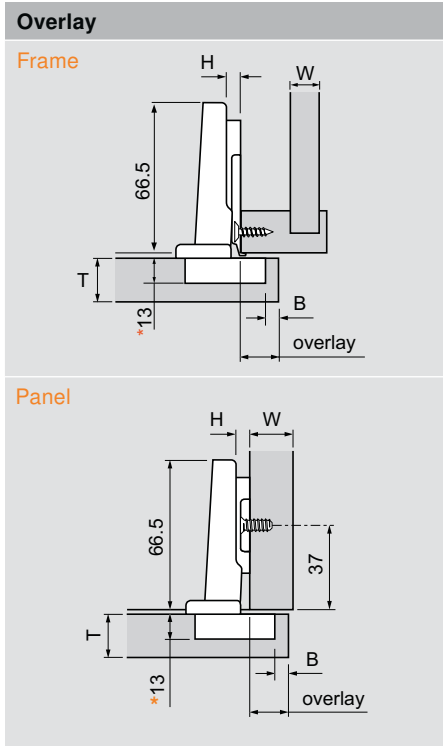
- BLUMOTION integrated into the hinge cup
- New geometry for door thicknesses up to **26 (1")**
- New INSERTA design
- Boring distance range 3 — 7 mm
- For door overlays up to 22 mm
- Press-in hinges must be inserted with knock-in tool or universal insertion ram



Minimum reveal table					
3	0.5	1.0	1.8	2.7	4.3
4	0.5	1.0	1.7	2.5	3.8
4.5	0.5	1.0	1.7	2.5	3.6
5	0.5	0.9	1.7	2.4	3.4
6	0.5	0.9	1.6	2.3	3.2
7	0.5	0.9	1.6	2.2	3.0
B = boring dist.	16	19	22	24	26

T = door thickness

Thickness greater than 26 trial app. recommended



* All 35 mm and 8 mm holes must be a minimum of 13 mm deep

H	Overlay						P	S
0	16	17	17.5	18	19	20	10	20
3	13	14	14.5	15	16	17	13	23
4.5	11.5	12.5	13	13.5	14.5	15.5	14.5	24.5
6	10	11	11.5	12	13	14	16	26
9	7	8	8.5	9	10	11	19	29
	3	4	4.5	5	6	7	Fixed dist.	X = 13
	B = boring distance							

H	Overlay						P	S
9	7	8	8.5	9	10	11	19	29
	3	4	4.5	5	6	7	Fixed dist.	X = 13
	B = boring distance							

H	Reveal						W	P	S
2	—	—	—	—	—	—	16		
9	5	3	2	—	—	—	19	19	29
	8	6	5	4	—	—	22		
	3	4	4.5	5	6	7			
	B = boring distance								

NOTE: 4.5 plate is only for use in frame cabinets, 9 plate is only for panel cabinets

Straight-arm	Self close
Screw-on	73B3550
Press-in	73B3580
EXPANDO	73B358E
INSERTA	73B3590

Straight-arm	Self close
Screw-on	73B3550
Press-in	73B3580
EXPANDO	73B358E
INSERTA	73B3590

The most common overlays for frame and panel cabinets can be achieved by using the same machine setting for hinge cup boring.

Bore all doors at 4.5 mm to achieve:

- **13 (1/2")** overlay on frame cabinets
- **17.5 (11/16")** overlay on panel cabinets

Advantages:

- One machine setting for boring all doors
- Same hinge used for both applications

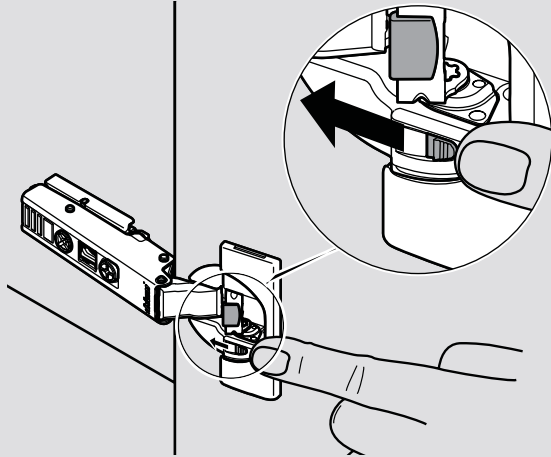
Abbreviations	
H	= Plate height
P	= Door protrusion
S	= Side arm protrusion
W	= Side panel width
X	= Fixed distance

Installation and accessories

Installation

BLUMOTION deactivation switch on hinge cup

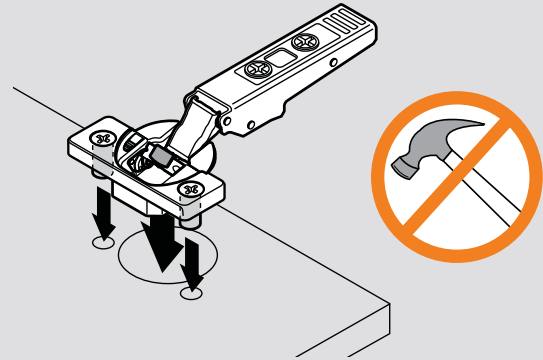
For small or light doors, the BLUMOTION can be deactivated on one hinge.



Door must be closed once for the deactivation to be complete. To reactivate, move switch back to original position.

Do not use a hammer for press-in

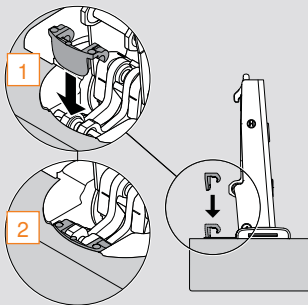
Pre-attached Ø8 dowels installed with Blum knock-in tool or MINIPRESS with universal insertion ram (both listed below).



Accessories

Angle restriction clip

Restricts opening angle of the CLIP top BLUMOTION hinge to 86°. Angle restriction clip can be inserted/removed before or after the hinge has been installed.



Angle restriction clip

Part no.

70T3553

Hinge cup spacer

1.5 mm spacer for use under the hinge cup. For retrofitting existing doors with a cup depth less than 13 mm.



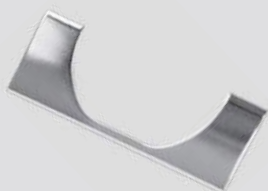
Hinge cup spacer

Part no.

70T3507.21

Hinge cup cover cap

For use with CLIP top BLUMOTION hinges only. Suitable for screw-on, press-in and EXPANDO hinge cups.



Part no.

Hinge cup cover cap

70T3504

Knock-in tool

Can be used to insert all Blum press-in hinges.



Part no.

Knock-in tool

ZME.0710

Universal insertion ram

Can be used for inserting all Blum press-in Euro hinges



Part no.

Universal insertion ram

MZM.0040

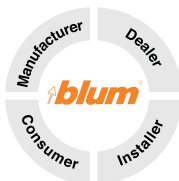


Why choose Blum

Blum, Inc. is a leading manufacturer of functional hardware for the kitchen cabinet and commercial casework industries specializing in lift systems, concealed hinges and drawer runner systems. Virtually all of the hardware needed to assemble and make cabinets functional is available within the wide range of quality Blum products. Blum supports the U.S. market with a network of more than 150 dependable distributors, 40+ knowledgeable Blum sales representatives and an experienced customer service department.

Commitment to manufacturing in the U.S.

Blum manufactures many of its products in our 450,000 sq ft manufacturing, logistics and warehouse facility located in Stanley, North Carolina. Manufacturing closer to the customer allows Blum to react quickly to changing customer needs including unexpected surges in demand. Customer pickups and deliveries can be timed to better match their production schedules. Blum is committed to manufacturing in the U.S. for the U.S. market.



Product development at Blum considers all of the various customers who will come in contact with our products. With this “Global Customer Benefits” philosophy we strive to create advantages for all users.



Blum, Inc. is ISO 9001 certified which means that you are assured of consistent quality in every Blum product. What's more they exceed the requirements of ANSI/BHMA standards for cycle life, static load and self-closing performance.



Please visit www.blum.com for information on other Blum products.
Technical specifications subject to change without notice.
LIT.HNG2100.08.10 ©2010 Printed in USA

Blum, Inc.
7733 Old Plank Rd.
Stanley, NC 28164
800-438-6788
704-827-1345
fax 704-827-0799
www.blum.com

