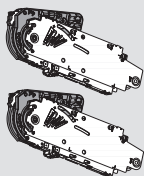


AVENTOS HS



Narrow aluminum frame door application

Lift mechanism set



- Lift mechanism (qty 2)
- #7 x 35 mm (1-3/8") wood screw (qty 10)

Part no.

20S2A00.N5

20S2B00.N5

20S2C00.N5

20S2D00.N5

20S2E00.N5

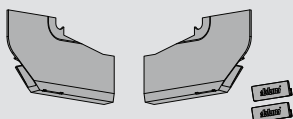
20S2F00.N5

20S2G00.N5

20S2H00.N5

20S2I00.N5

Cover set



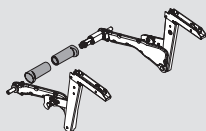
- Right and left cover plate
- Non-handed cover caps (qty 2)
- Colors: Light Gray, Dark Gray and Silk White

Part no.

Cover set

20S8020.NA

Arm assembly set



- Right and left arm assembly
- Stabilizer rod cover cap (qty 2)

Part no.

Arm assembly set

20S3500.06

Round stabilizer rod



- Aluminum rod length **1061** (41-3/4"), cut to size
- Length = interior cabinet opening minus **129** (5-1/16")

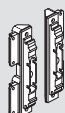
Part no.

Round stabilizer rod

20Q1061UN

NOTE: For cabinets wider than 48" two stabilizer rods and a stabilizer rod connector set required.

Narrow aluminum hardware set



- Arm assembly mounting plate (qty 2)
- 699.110 — Aluminum screw for narrow aluminum lever arm mounting plate (qty 8)

Part no.

Narrow aluminum hardware set

20S4200A

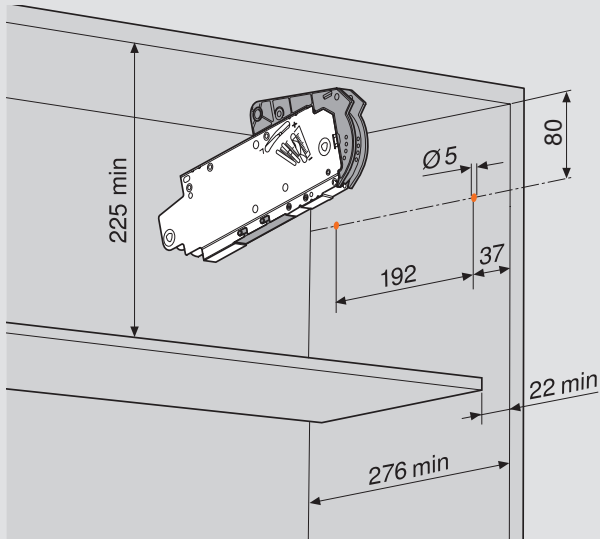


WARNING

Risk of injury from spring-loaded arm

- Do not push arm assembly down or leave in the down position.
- Remove mechanism before installing or removing cabinet.

1 Locating pin locations and minimum depth



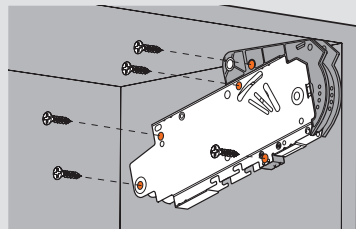
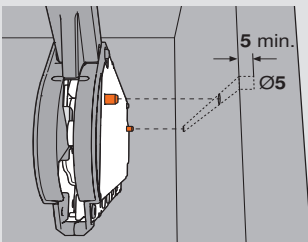
Part no.

Universal individual template is available for pre-boring holes for locating pins.

65.1051.02

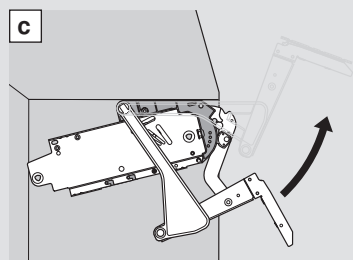
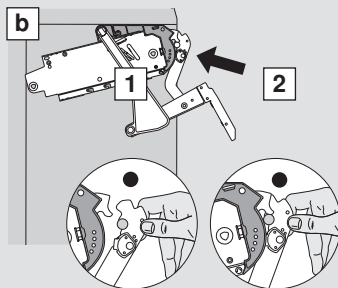
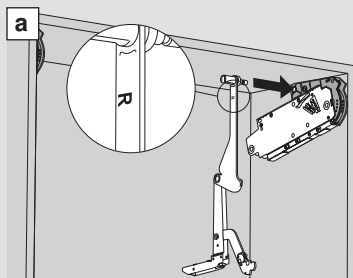
2 Attaching the lift mechanism

Align the two locating pins on the lift mechanism with the two $\text{Ø}5 \times 5$ holes bored in the side of cabinet, and attach the mechanism with the five wood screws provided.



#7 x 35 mm (1-3/8") wood screws (qty 5)

3 Attaching the arm assembly



Before starting, see safety note on page 2.

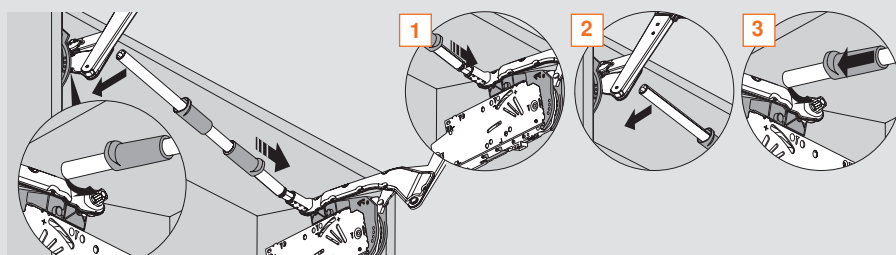
- Find the right and left arm assemblies and match them to the correct side of the cabinet.
- Attach the arm assembly to the lift mechanism as shown.
- Lift up on the arm assembly to lock into place.



Risk of injury from spring loaded arm.

4 Attaching the stabilizer rod

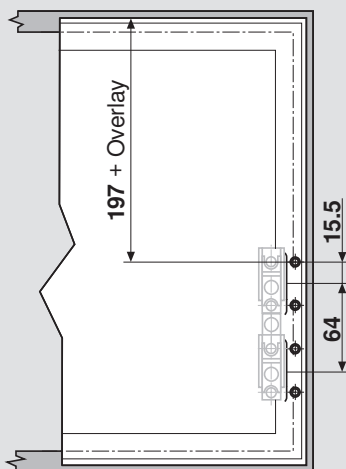
Cut the stabilizer rod to fit the cabinet. Length = Interior cabinet opening minus **129** (5-1/6")
After cutting the rod to size follow steps 1, 2, and 3 below.



- Slide the stabilizer arm cover caps onto the rod.
- Attach the stabilizer rod to spring loaded arm assembly.
- Slide stabilizer arm cover caps over rod on each end.

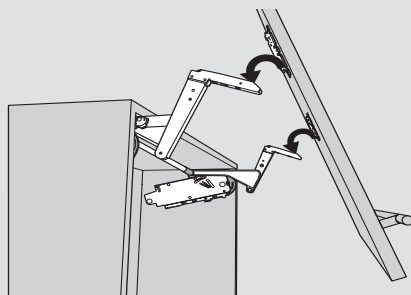
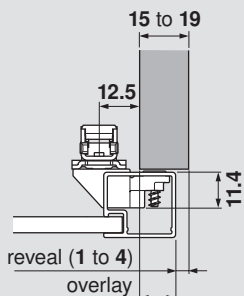
5a Mounting plate position

Attach the mounting plate to the door.



Minimum 5 side reveal when adjacent to wall.

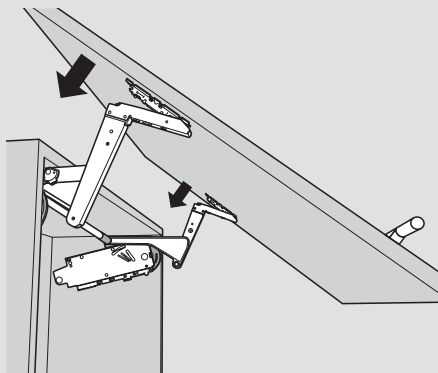
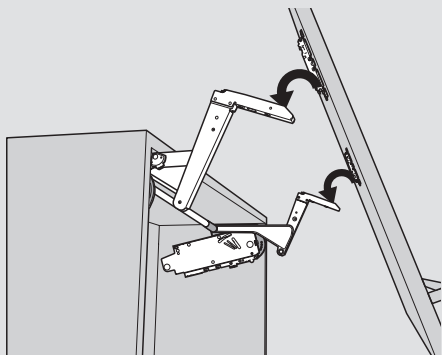
NOTE: All four screws must be installed.

5b Planning narrow alum. frames

NOTE: When changing material thickness, adjust assembly dimensions.

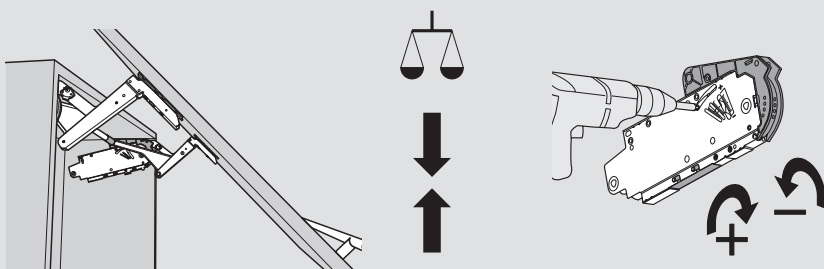
6 Attaching the door

Attach the door using the CLIP mechanism to the arm assembly.



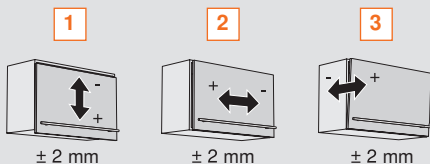
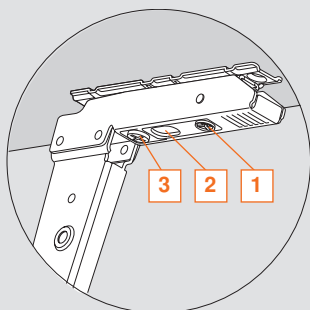
7 Adjusting the lift mechanism tension

Use a screw gun and the #2 x 2 POZI driver bit to adjust the lift mechanism to the desired tension.



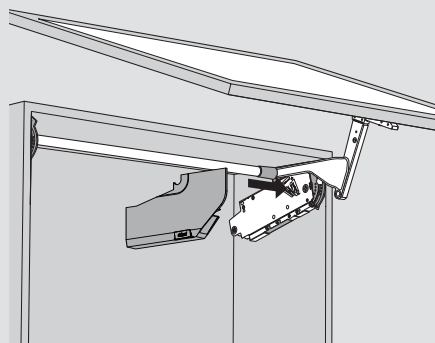
8 Adjusting the door

Use a POZI screwdriver to adjust cam adjustments for each of the three-dimensional adjustments.



9 Attach covers

Place the left and right cover plates over the appropriate lift mechanisms and snap them in place.





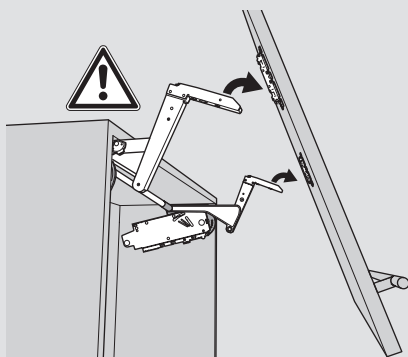
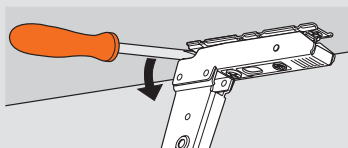
WARNING

Risk of injury from spring-loaded arm

- Do not push arm assembly down or leave in the down position.
- Remove mechanism before installing or removing cabinet.

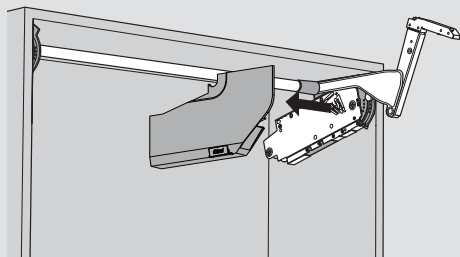
1 Removing the door

Open the door. Use a screwdriver to disengage the CLIP mechanism of the arm assembly from the mounting plate.



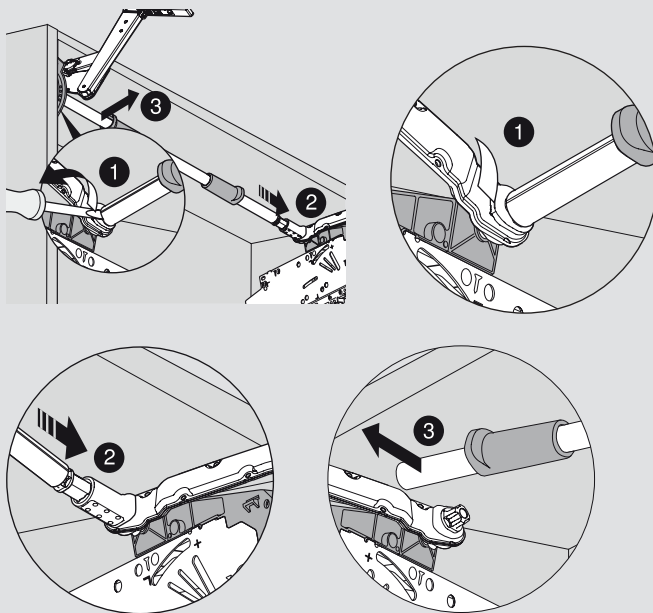
2 Remove the covers

Remove the left and right cover plates.



3 Remove the stabilizer rod

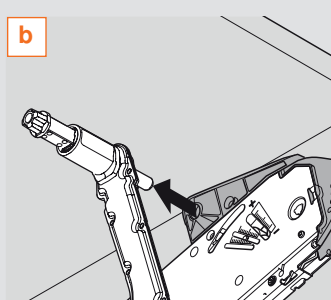
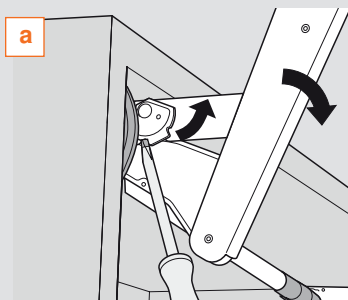
Pull back the stabilizer rod cover caps and loosen the locking screw on each end of the stabilizer rod. Remove the Stabilizer rod from the cabinet.



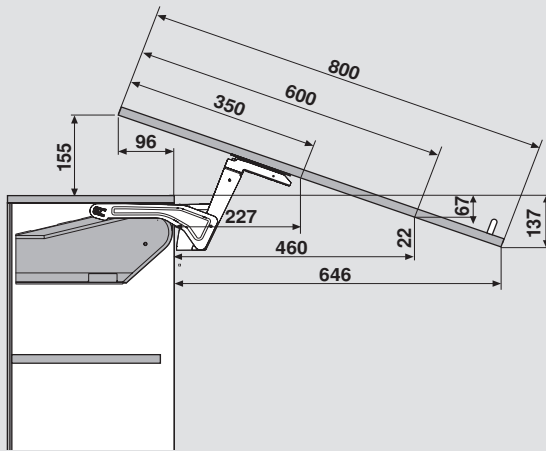
4 Removing the arm assembly

a Use a screwdriver to disengage the arm assembly as shown.

b Remove arm assembly from mechanism.
Cabinet is now ready for transport.



Frameless door protrusion for common cabinet heights.



	Inch	mm
1/32	.031	1
1/16	.063	1.5
3/32	.094	2
1/8	.125	3
5/32	.156	4
3/16	.188	5
7/32	.219	5.5
1/4	.25	6
9/32	.281	7
5/16	.313	8
11/32	.344	9
3/8	.375	9.5
13/32	.406	10
7/16	.438	11
15/32	.469	12
1/2	.5	13
17/32	.531	13.5
9/16	.563	14
19/32	.594	15
5/8	.625	16
21/32	.656	17
11/16	.688	17.5
23/32	.719	18
3/4	.75	19
25/32	.781	20
13/16	.813	20.5
27/32	.844	21
7/8	.875	22
29/32	.906	23
15/16	.938	24
31/32	.969	24.5
1	1	25.4