



**HOLDING STRONG
SINCE 1941**

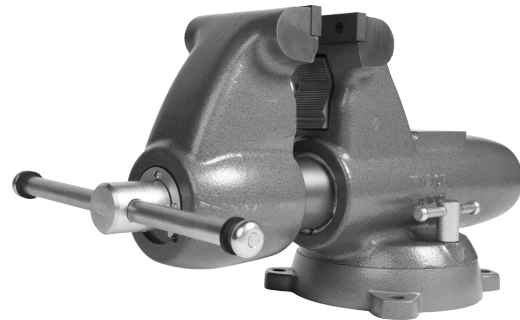
COMBINATION PIPE AND BENCH 6" JAW ROUND CHANNEL VISE WITH SWIVEL BASE

28828

Proudly made in the USA, the Combination Pipe and Bench round channel vise is designed to handle the most demanding clamping applications. Unlike most vises that have a fixed center nut, the Combination Pipe and Bench round channel vise nut is anchored at the rear which provides straight line pull and even pressure resulting in greater durability. The round channel design also allows for a completely enclosed spindle and nut assembly keeping debris out and lubrication in for a lifetime of smooth operation. For ultimate versatility, the Combination Pipe and Bench vise is equipped with main jaws, pipe jaws and a machined anvil work surface.

FEATURES

- Massive cast iron vise body is virtually indestructible, weighing up to 30% more than competing models
- Sealed construction keeps lubrication in and contaminants out for a lifetime of smooth operation
- Precision slide bar eliminates movement in the front jaw regardless of opened distance
- Longer spindle nut ensures smooth movement and a stronger straight-line pull
- Hardened steel replaceable jaw inserts are machine serrated for a safe and secure grip under maximum torque
- Replaceable steel pipe jaws hold up to 6" pipe safely and securely
- Large anvil designed to take a beating while forming and shaping materials
- Locking swivel base with double lockdowns for non-slip hold in any position



SPECIFICATIONS

Jaw Width (In.)	6
Opening Capacity Max (In.)	10-1/4
Throat Depth (In.)	6-1/2
Pipe Jaw Capacity (In.)	1/2 - 6
Type of Base	360 Degree Swivel
Center Distance (In.)	4
Jaw Depth (In.)	5/8
Jaw Height (In.)	1-1/4
Pipe Jaw #	2907600
Serrated Jaw Inserts #	2907370

RESOURCES

- [Manual](#)
- [View More Details](#)