



SERVICE PARTS LIST

BULLETIN NO.
54-49-2615

SPECIFY CATALOG NO. AND SERIAL NO. WHEN ORDERING PARTS		REVISED BULLETIN	DATE
M12™ Brushless 2" PLANER			Jan. 2023
		WIRING INSTRUCTION	
		See Page 3	

EXAMPLE:
00 0 Component Parts (Small #)
Are Included When Ordering
The Assembly (Large #).

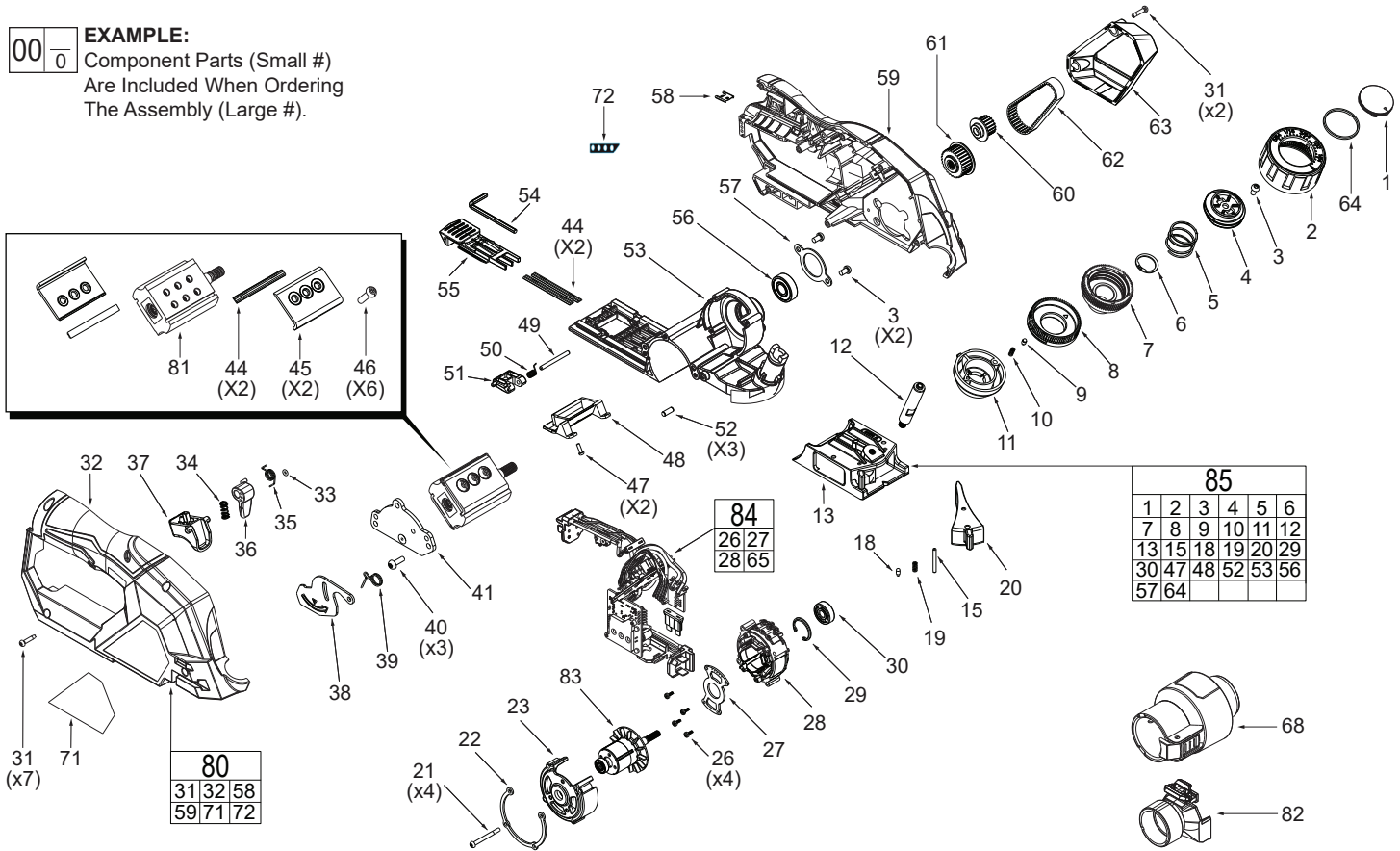
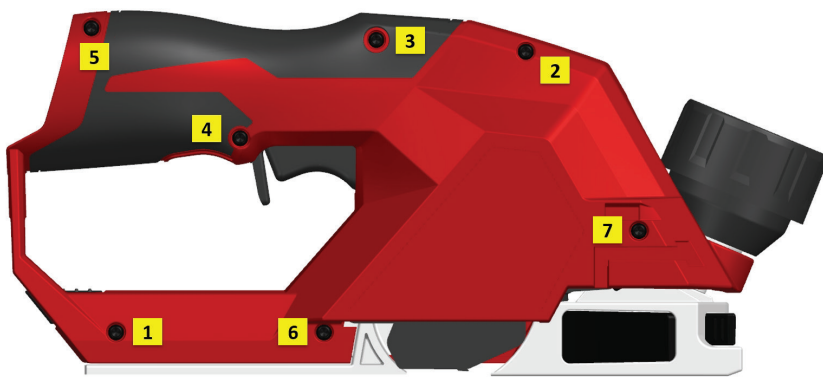


FIG.	PART NO.	DESCRIPTION OF PART	NO. REQ.
1	31-15-0308	Depth Indicator Disc	(1)
2	31-12-0076	Front Knob	(1)
3	05-78-0038	M4.0x0.7-6h Pan Hd. M Steel Screw	(3)
4	31-86-0042	Rod Pusher Nut	(1)
5	40-50-0491	Spring	(1)
6	31-86-0043	Retaining Ring	(1)
7	31-88-0090	Threaded Boss	(1)
8	31-12-0077	Detent Calibration Disc	(1)
9	06-65-3701	Depth Adjust Click Pin	(1)
10	40-50-0802	Spring	(1)
11	31-06-0055	Knob Base	(1)
12	36-18-0540	Rear Shoe Shaft	(1)
13	28-06-0830	Front Shoe	(1)
15	-----	Pin Dia 2.5x22	(1)
18	06-65-3703	Click Pin	(1)
19	40-50-0693	Spring	(1)
20	31-84-0105	Blower Chute Flipper	(1)
21	05-74-0248	M3.0x0.5-6g Pan Hd. M Steel Screw	(4)
22	31-86-0044	Plate for Motor	(1)
23	31-12-0078	Rear Motor Cage	(1)
26	05-88-0106	M2.0x0.89 Pan Hd. PT Screw	(4)
27	-----	PCBA	(1)
28	-----	Stator	(1)
29	31-86-0045	C-Ring	(1)
30	02-04-0223	Deep Groove Ball Bearing	(1)
31	06-82-1080	M3.0 Pan Hd. PH Torx T-10 ST Screw	(9)
32	-----	Right Handle Housing	(1)
33	34-40-0089	NBR O-Ring for Trigger Switch	(1)
34	40-50-0694	Trigger Spring	(1)
35	40-50-0696	Torsion Spring	(1)
36	31-92-0006	Trigger Lockout	(1)
37	31-92-0007	Trigger	(1)
38	43-54-0201	Rabbeting Guard	(1)
39	40-50-0697	Torsion Spring	(1)
40	05-88-1206	M4x0.7 Pan Hd. M Steel Screw	(3)
41	43-54-0202	Cutterhead Support Assembly	(1)

FIG.	PART NO.	DESCRIPTION OF PART	NO. REQ.
44	42-41-4200	Planer Blade	(4)
45	44-66-0228	Clamp Plate	(2)
46	06-75-0024	Button Head Cap #10-24x3/4" M Screw	(6)
47	05-73-0170	M2.5x0.45 Pan Hd. M Screw	(2)
48	31-05-0440	Air Deflector	(1)
49	06-65-3704	Pin Dia 3x32.45	(1)
50	40-50-0009	Spring	(1)
51	31-21-0137	Kickstand	(1)
52	06-65-3705	Pin Dia 4x10.5	(3)
53	28-06-0831	Rear Shoe	(1)
54	43-96-0270	Hex Key	(1)
55	31-21-0138	Blade Storage	(1)
56	02-80-0190	Deep Groove Ball Bearing	(1)
57	31-86-0046	Plate for Bearing	(1)
58	42-70-0058	Housing Connection Clip	(1)
59	-----	Left Handle Housing	(1)
60	44-77-0196	Pulley 18T-3MR-18S	(1)
61	44-77-0197	Pulley 28T-3MR-28S	(1)
62	42-25-0036	Belt	(1)
63	31-15-0309	Belt Cover	(1)
64	-----	Felt	(1)
68	43-76-0135	Universal Vacuum Adapter	(1)
71	12-20-0433	Service Nameplate	(1)
72	-----	Gauge Label	(1)
80	14-38-2505	Housing Kit	(1)
81	28-52-0020	Cutting Head Assembly	(1)
82	14-46-0109	Vac Port Assembly	(1)
83	16-01-0014	Rotor Assembly	(1)
84	14-20-0163	Electronics Assembly	(1)
85	14-34-0195	Adjustment Knob Assembly	(1)

Housing Screws Fasten Order



IMPORTANT:

IT IS CRITICAL TO REMOVE SCREWS IN THE DISPLAYED ORDER TO PREVENT DAMAGE TO THE TOOL.

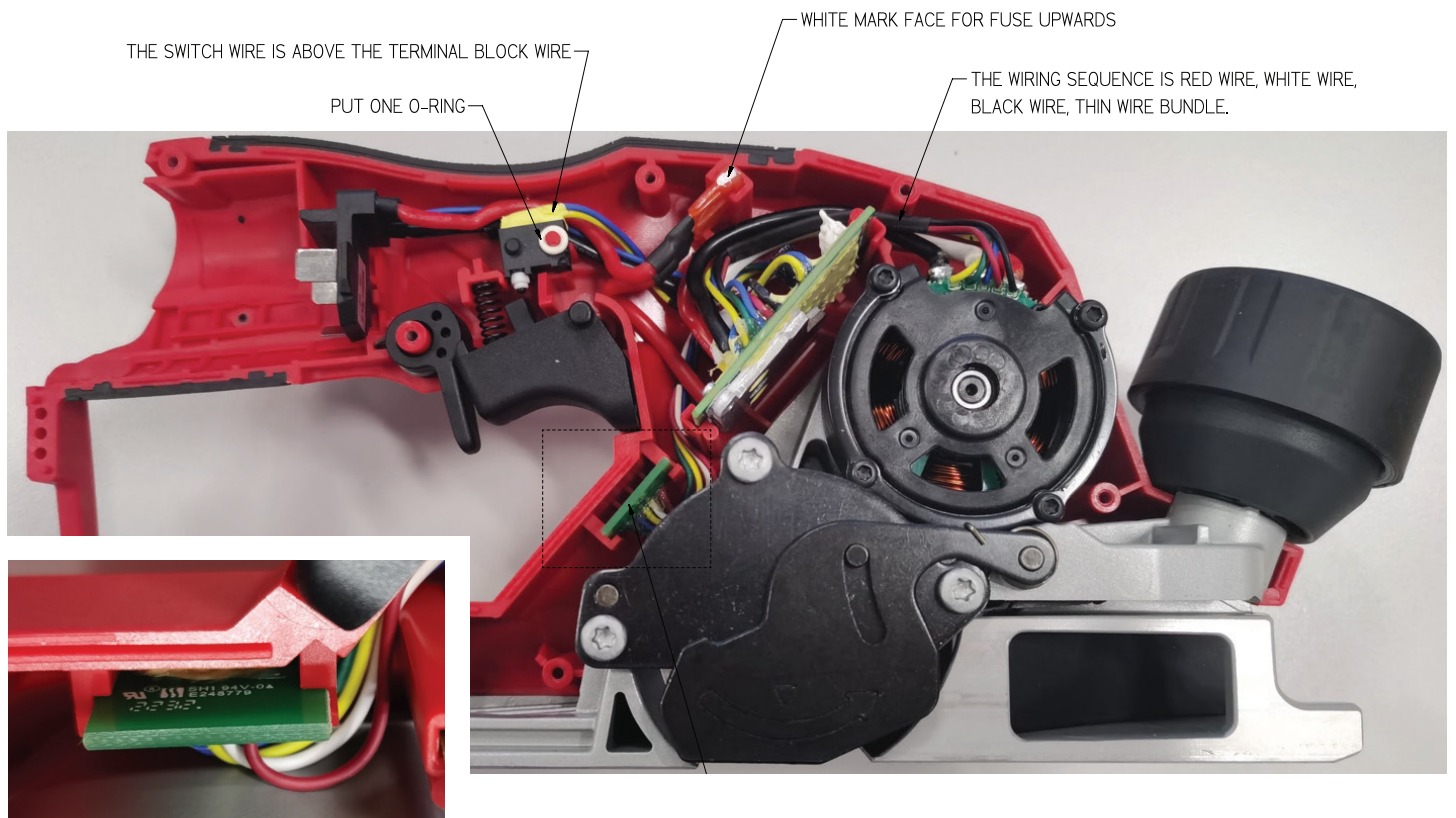
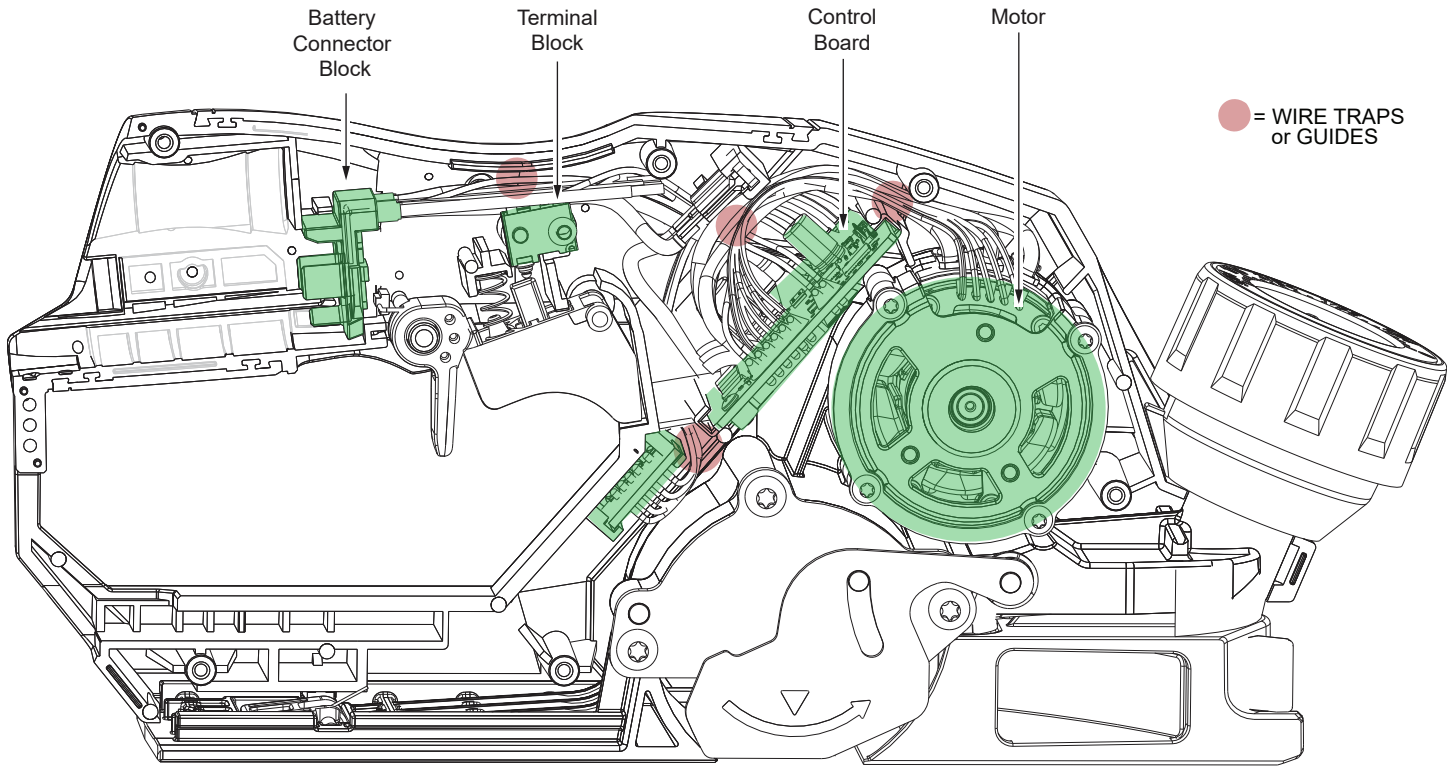
Cutterhead Assembly Screws Fasten Order



NOTE - it is critical to remove the Cutterhead Assembly screws in the displayed order to prevent damage to the tool.

SCREW TORQUE SPECIFICATIONS				
FIG.	PART NO.	WHERE USED	SEAT TORQUE	
			(kgf-cm)	(lb-in)
3	05-78-0038	Adjustment Knob Assembly	22-27	19-23
12	36-18-0540	Rear Shoe Shaft	78-85	68-74
21	06-82-2025	Motor Assembly	8-11	7-10
26	05-88-0106	Motor Assembly	2.4-3	2-2.6
31	06-82-1080	Right Handle Housing Cover	8-12	7-10
40	05-88-1206	Cutterhead Support Assembly	28-34	24-30
46	06-75-0024	Cutting Head Assembly	18-22	16-19
47	05-73-0170	Air Deflector	2.4-3	2-2.6
60	44-77-0196	Pulley 18T-3MR-18S	40-45	35-39
61	44-77-0197	Pulley 28T-3MR-28S	65-70	56-61

Service Wiring



FUEL BOARD should be installed in place.

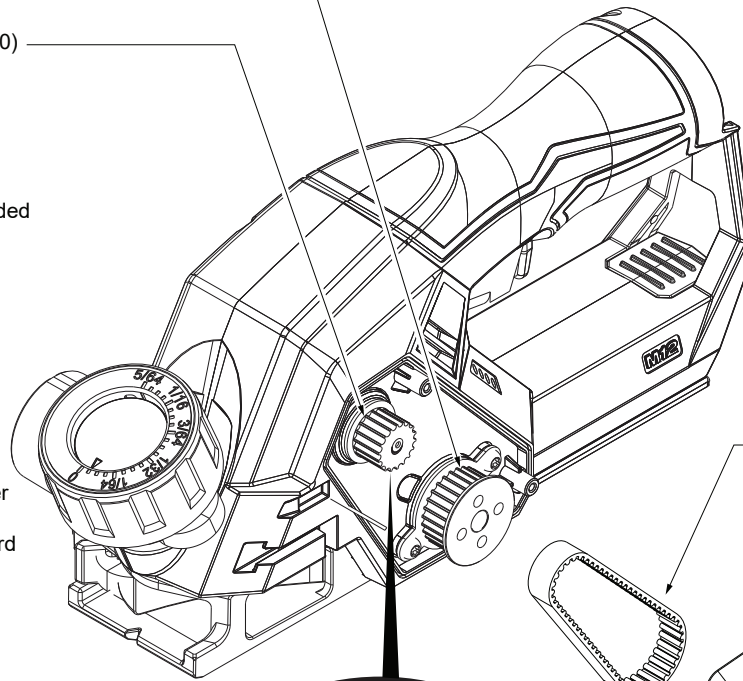
Removing and Installing the Drive Belt

Driven Pulley (61)

Driver Pulley (60)

When replacing belt (62), use the recommended replacement belt only. Order **42-25-0036**.

- Always **REMOVE** the **BATTERY** before performing any service or maintenance.
- Remove the two M3 belt cover screws (31) with a T-10 screwdriver.
- Remove the belt cover (63).
- With both hands, work the belt off of smaller driver pulley (60) by turning the belt in the direction shown while pulling the belt upward and outward. Continue working the belt upward until it is off the smaller pulley. Remove belt over the lip of the larger driven pulley (61).
- Install new belt by placing belt onto the driver pulley (60), being sure that belt is completely on the pulley. Place the other end of the belt onto top of driven pulley (61). While turning the belt, push and work it onto the larger pulley. Continue working the belt downward onto the pulley until it is in place.
- Replace the belt cover (63) and secure with the two screws (5). **NOTE:** Do not over-tighten screws.



Belt (62)
42-25-0036

Belt Cover (63)
31-15-0309

M3 Screws (31)
(x2)
06-82-1080