



SERVICE PARTS LIST

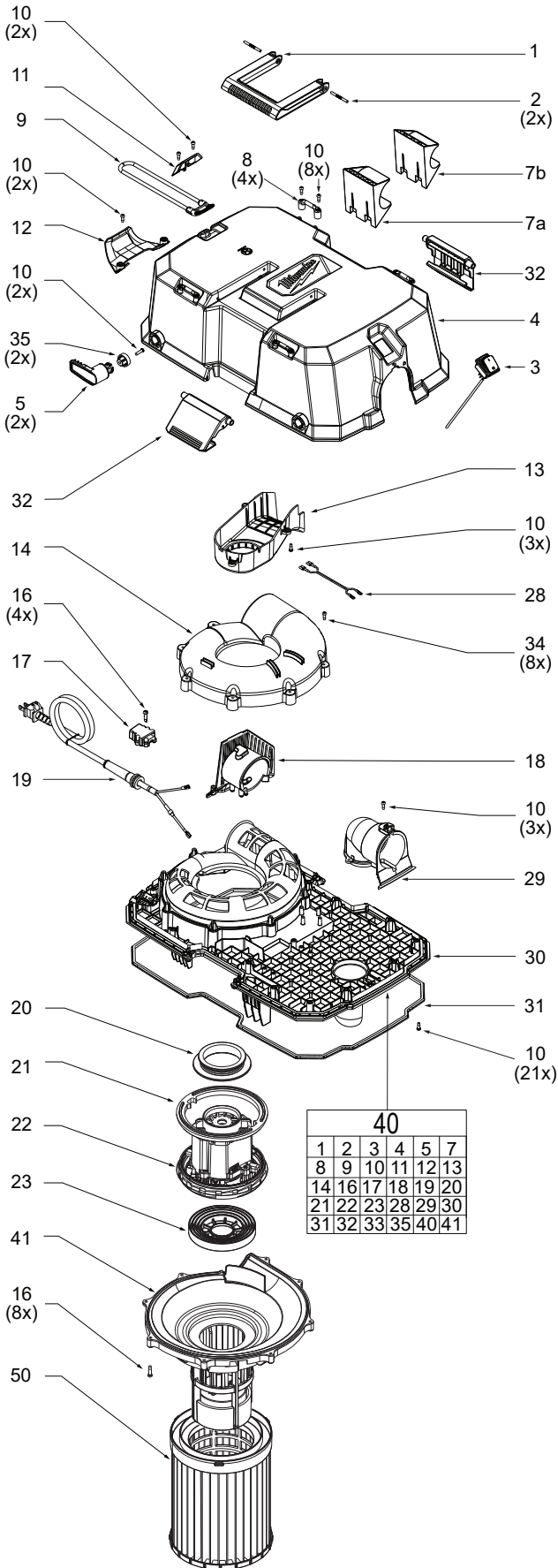
BULLETIN NO.
54-05-0195

| | | | |
|--|---------------------|----------------------------------|-----------|
| SPECIFY CATALOG NO. AND SERIAL NO. WHEN ORDERING PARTS | | REVISED BULLETIN | DATE |
| 6.5 PEAK HP WET/DRY VACUUM MOTOR HEAD | | | Dec. 2022 |
| CATALOG NO. 0931-20 | STARTING SERIAL NO. | M56A | |
| | | WIRING INSTRUCTION See Page 2 | |

EXAMPLE:

| | |
|----|---|
| 00 | 0 |
|----|---|

 Component Parts (Small #) Are Included When Ordering The Assembly (Large #).

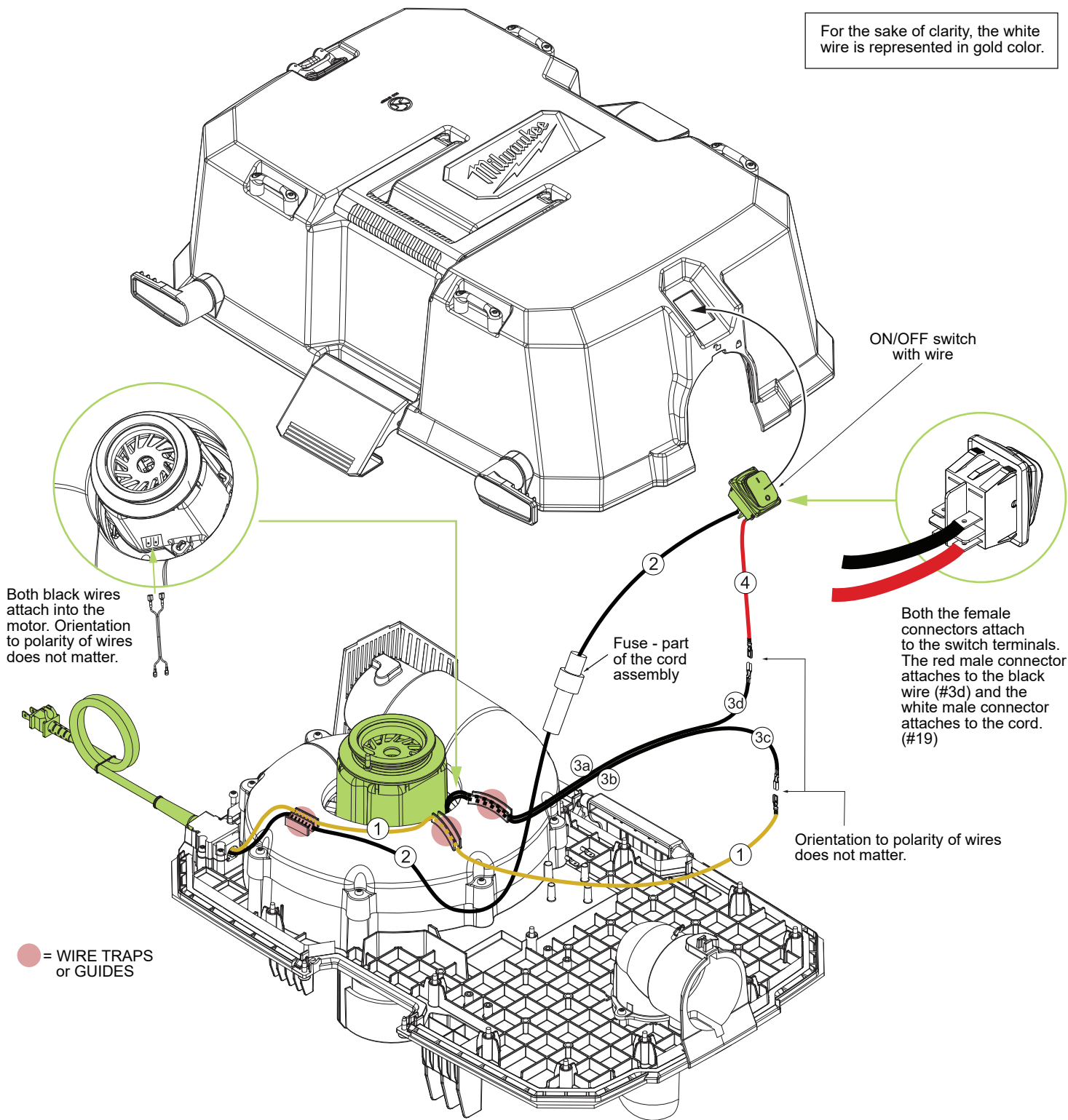


SERVICE PARTS EXPLODED VIEW

| FIG. | PART NO. | DESCRIPTION OF PART | NO. REQ. |
|------|------------|---|----------|
| 1 | 31-44-0341 | Carrying Handle | (1) |
| 2 | 31-44-7017 | Knurled Pin | (2) |
| 3 | 23-66-0278 | Switch with wire | (1) |
| 4 | 43-64-0012 | Head | (1) |
| 5 | 22-64-0036 | Rotating Cord Wrap | (2) |
| 7a | 31-17-0535 | Hose Clip for 2.5" Hose | (1) |
| 7b | 31-17-0520 | Hose Clip for 1.875" Hose | (1) |
| 8 | 45-58-0285 | Mounting Cleat | (4) |
| 9 | 14-37-0185 | Bungee Hose Strap | (1) |
| 10 | 05-74-1011 | 8-18x12mm Hi-Lo T-15 Screw | (41) |
| 11 | 42-28-0560 | Bungee Holder | (1) |
| 12 | 31-70-0170 | Hose Rest Bracket | (1) |
| 13 | 31-50-0150 | Motor Cooling Path | (1) |
| 14 | 31-15-0184 | Upper Volute Cover | (1) |
| 16 | 05-74-1012 | 8-18x16mm Hi-Lo T-15 Screw | (12) |
| 17 | 44-20-0276 | Cord Clamp | (1) |
| 18 | 45-36-0021 | AC Outlet | (1) |
| 19 | 31-15-0258 | Cord Assembly with Fuse | (1) |
| 20 | 45-06-0070 | Radial Motor - Seal | (1) |
| 21 | 28-28-0033 | Motor Isolator Upper | (1) |
| 22 | 18-07-0063 | Motor Assembly | (1) |
| 23 | 45-12-0013 | Motor Isolator - Lower | (1) |
| 28 | 22-38-0105 | Motor Pigtail | (1) |
| 29 | 43-33-0480 | Inlet Elbow | (1) |
| 30 | 43-40-0034 | Midframe | (1) |
| 31 | 45-06-0587 | Midframe Gasket | (1) |
| 32 | 44-20-0049 | Tank Buckle | (2) |
| 33 | 12-20-0419 | Service Nameplate (Not Shown) | (1) |
| 34 | 05-74-1013 | 8-18x10mm Hi-Lo T-15 Screw | (8) |
| 35 | 42-38-0034 | AC Cord Wrap Retention Plug | (2) |
| 40 | 0931-20 | Head Assembly | (1) |
| 41 | 42-46-0031 | Lower Volute/Float Cage Assembly | (1) |
| 50 | 49-90-1978 | Large Wet/Dry Vacuum High Efficiency Filter | (1) |

| | | | | | | |
|----|----|----|----|----|----|--|
| 40 | | | | | | |
| 1 | 2 | 3 | 4 | 5 | 7 | |
| 8 | 9 | 10 | 11 | 12 | 13 | |
| 14 | 16 | 17 | 18 | 19 | 20 | |
| 21 | 22 | 23 | 28 | 29 | 30 | |
| 31 | 32 | 33 | 35 | 40 | 41 | |

For the sake of clarity, the white wire is represented in gold color.



WIRING SPECIFICATIONS

| Wire No. | Wire Color | Origin or Gauge | Length | Terminals, Connectors and 1 or 2 End Wire Preparation |
|----------|------------|-----------------|--------|--|
| 1 | White | ---- | ---- | Component of cord set (Part #19) Connect to wire #3c. |
| 2 | Black | ---- | ---- | Component of cord set (Part #19) Connect to switch. |
| 3a | Black | ---- | ---- | Component of the motor pigtail (Part #28) Connect to motor. |
| 3b | Black | ---- | ---- | Component of the motor pigtail (Part #28) Connect to motor. |
| 3c | Black | ---- | ---- | Component of the motor pigtail (Part #28) Connect to wire #1. |
| 3d | Black | ---- | ---- | Component of the motor pigtail (Part #28) Connect to wire #4. |
| 4 | Red | ---- | ---- | Component of the switch assembly (Part #3) Connect to wire #3d and switch. |