



SERVICE PARTS LIST

BULLETIN NO.
54-49-0885

SPECIFY CATALOG NO. AND SERIAL NO. WHEN ORDERING PARTS		REVISED BULLETIN	DATE
M12™ MOUNTING FAN			Apr. 2022
CATALOG NO. 0820-20	SERIAL NUMBER M10A	WIRING INSTRUCTION	

EXAMPLE:
Component Parts (Small #) Are Included
When Ordering The Assembly (Large #).

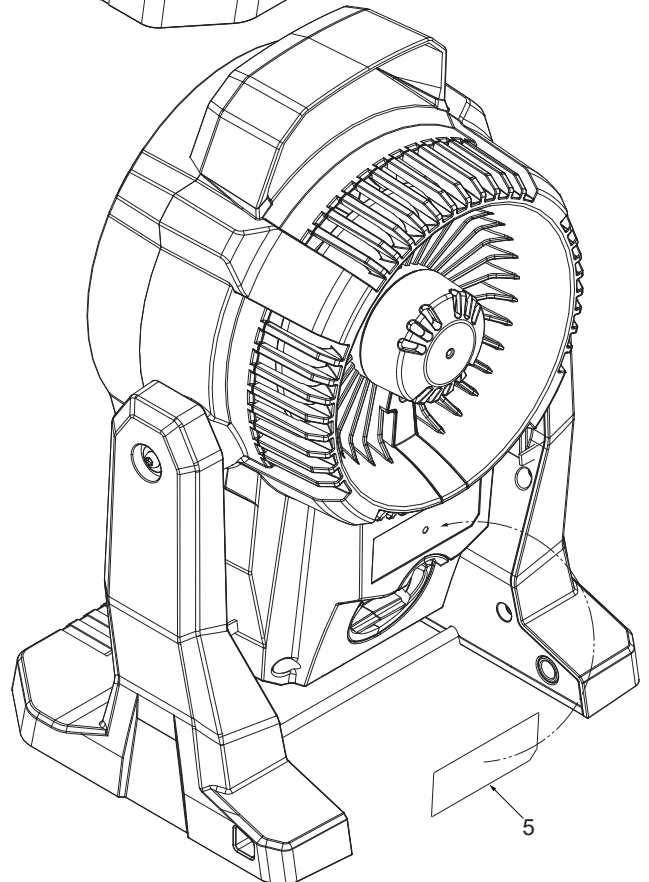
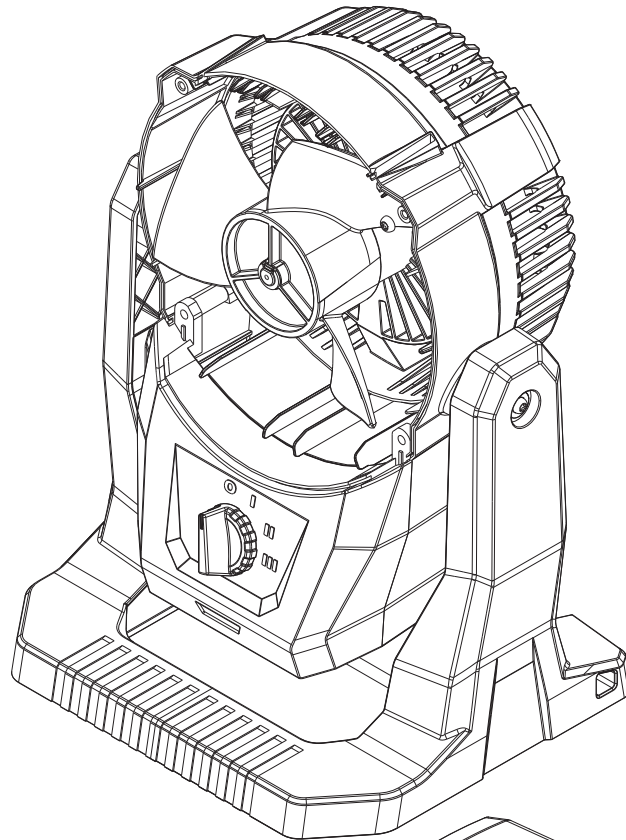
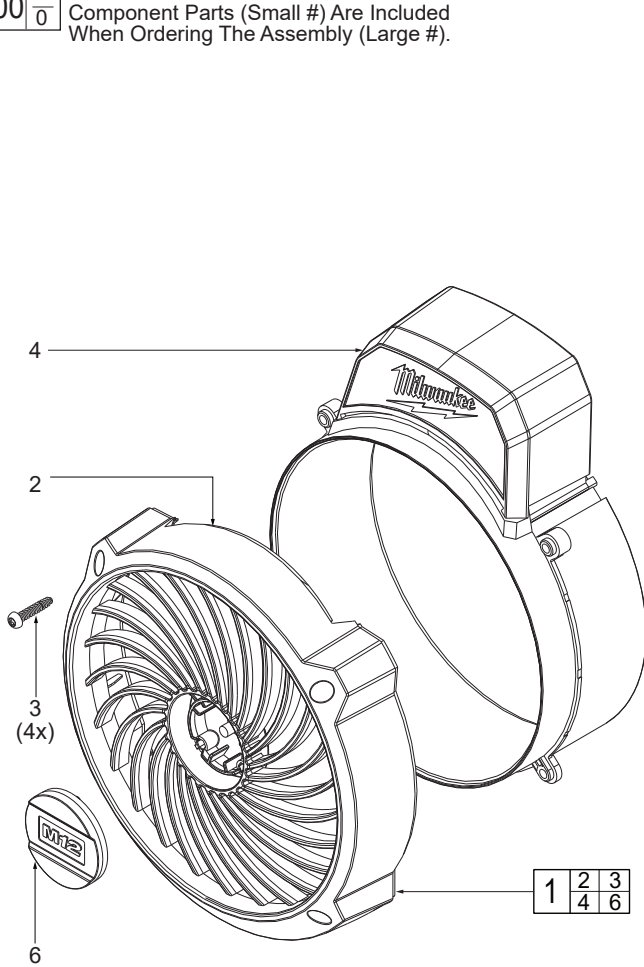


FIG.	PART NO.	DESCRIPTION OF PART	NO. REQ.
1	43-52-0820	Front Grill/Middle Housing Service Kit	(1)
2	-----	Front Grill	(1)
3	-----	ST4 x 20mm Hex Socket Screw	(4)
4	-----	Middle Housing with Handle	(1)
5	12-20-3820	Service Nameplate	(1)
6	-----	M12 Badge	(1)

FIG. NOTES

3 Torque specification: 1.2-1.3 Nm, 12.2-13.2 kgf-cm, 10.6-11.5 lbf-in.

5 A clean, dry surface is essential for proper performance for any adhesive system. The area intended for application of any adhesive label or nameplate must be prepared by cleaning with isopropyl alcohol. The solvent is to be applied with a clean, lint free applicator and the surface allowed to dry before applying the label or nameplate.