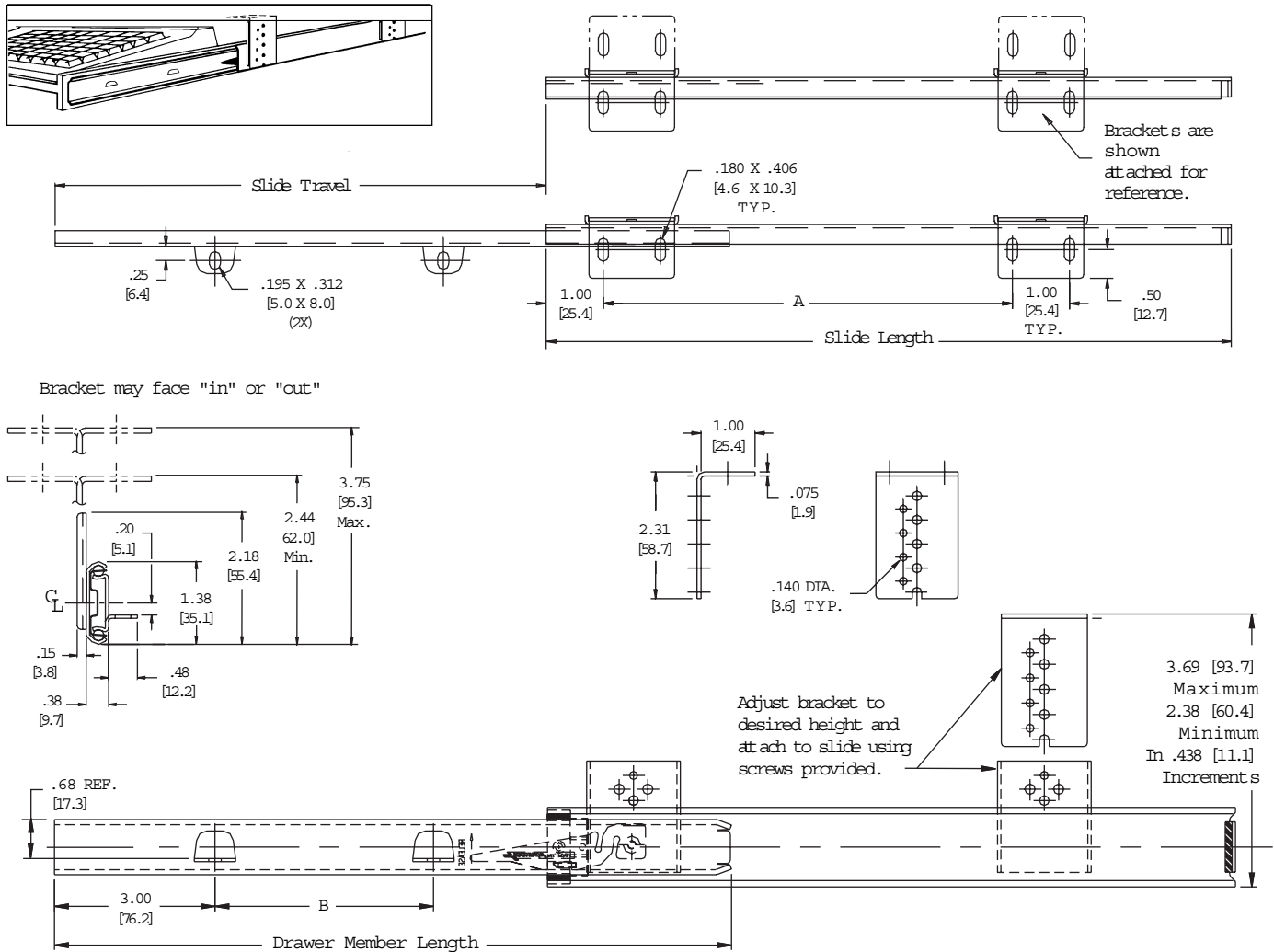


APPLICATIONS: Computer keyboards, typewriter and writing shelves, and pencil drawers. Anywhere an adjustable height shelf or shallow drawer is suspended over or under a work surface with shelf/drawer mounted on inner member tabs. This product is covered by U.S. (6,145,945) and various foreign patents issued and/or pending.

Variable Height Keyboard Slide
Shelf Mounting Tabs
75 lb. [34 kg.] Capacity*



- Finish Bright electro-zinc (C) or black zinc* (B) plating available
- Length 12" to 28" [305mm to 711mm]
- Travel 3/4 Extension
- Load 75 lbs. [34 kg.] per pair**
- Movement Steel ball bearings
- Brackets Variable height, inboard/outboard
- Mounting Mounting tabs
- Features Detent in the open position, lever disconnect, silenced in-stops
- Hand Left hand shown, right hand opposite

* Minimum order quantities may apply
** Load rating based on an 18" slide on a 16" wide drawer cycled 50,000 times.

Part Number	Slide Length	Slide Travel	Drawer Member Length	A	B
2019-12	12.00 [304.8]	9.00 [228.6]	11.81 [300.0]	8.50 [216.9]	4.00 [101.6]
2019-14	14.00 [355.6]	11.00 [279.4]	13.81 [350.7]	8.50 [216.9]	6.00 [152.4]
2019-16	16.00 [406.4]	12.00 [304.8]	15.81 [401.6]	8.50 [216.9]	8.00 [203.2]
2019-18	18.00 [457.2]	13.50 [342.9]	17.81 [452.4]	8.50 [216.9]	9.00 [228.6]
2019-20	20.00 [508.0]	15.00 [381.0]	19.81 [503.2]	8.50 [216.9]	10.50 [266.7]
2019-22	22.00 [558.8]	16.50 [419.1]	21.81 [554.0]	16.50 [419.1]	12.00 [304.8]
2019-24	24.00 [609.6]	17.50 [444.5]	23.81 [604.8]	16.50 [419.1]	13.00 [330.2]
2019-26	26.00 [660.4]	19.00 [482.6]	25.81 [655.6]	16.50 [419.1]	14.00 [355.6]
2019-28	28.00 [711.2]	20.00 [508.0]	27.81 [706.4]	16.50 [419.1]	15.00 [381.0]

Drawer Member

1. Separate slide members by depressing the lever release.
2. Mount shelf/drawer on the inner member tabs using #8 wood screws. See Figure 1.

Cabinet Member

1. Attach brackets to slide at desired height (2-3/8" [60.4mm] minimum to 3-11/16" [93.7mm] maximum) and position (inboard/outboard) using self-tapping screws. Cabinet member to be mounted parallel to drawer sides.
2. Locate screw holes for mounting brackets on the underside of desk top (or equivalent mounting surface). See "A" on chart on front page for dimensions. Reference Figure 3.

NOTE: Mounting bracket adjusts vertically in 7/16" [11.1mm] increments

For Brackets Facing Out

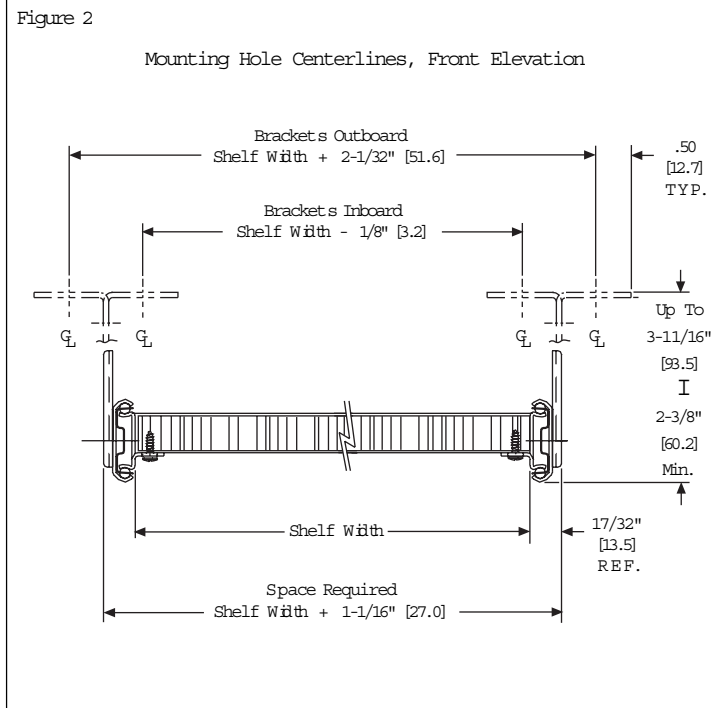
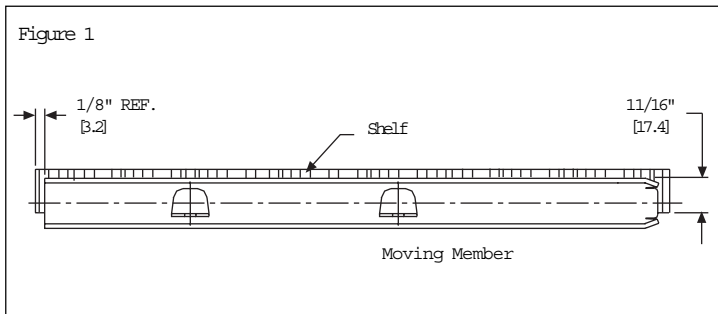
Use the width of the drawer plus 2-1/32" [51.6mm] for bracket screw hole centers. See Figure 2.

For Brackets Facing In

Use the width of the drawer minus 1/8" [3.2mm] for bracket screw hole centers. See Figure 2.

NOTE: Tighten bracket screws on one side, then open and close (cycle) drawer a few times to be certain the slides have self-adjusted to a parallel position and are moving freely. Tighten bracket screws on other side.

3. Adjust height of drawer and install remaining screws in moving member.



Slide Ordering Instructions

Complete your slide order for Accuride Model 2019 by specifying the following:

	10 Pair	C	2019	-16	D
Total Slides Required _____					
Slide Finish _____					
Slide Model _____					
Slide Length _____					
Polybag Packaging - (includes bracket kit) _____					

Packaging

Distributor (D) Pack: All lengths are packaged 10 pair per box. Polybag contains 1 pair of slides and 1 mounting bracket kit. Zinc finish slides include zinc finish brackets. Black finish slides include black finish brackets

Bulk Pack: Lengths 12" to 20" are packaged 15 pair per box. Lengths 22" - 28" are packaged 10 pair per box. Slides and mounting bracket kits are ordered and packaged separately. Order 1 kit per pair of slides ordered.

Mounting Bracket Kit

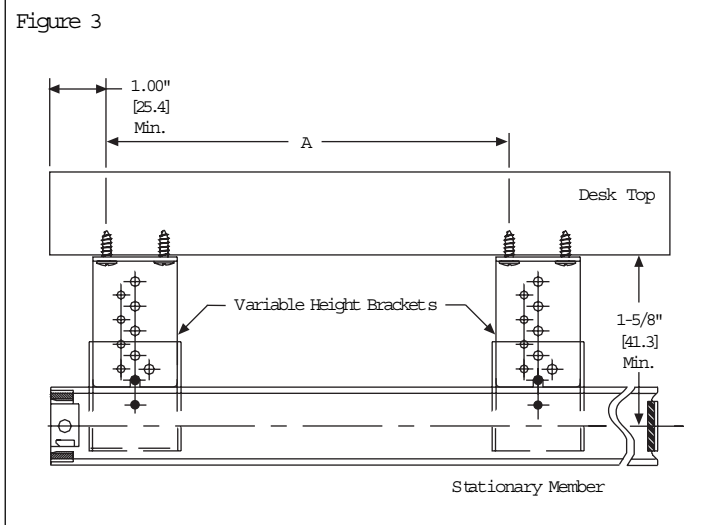
For slides ordered in bulk, mounting bracket kits are ordered separate. Bracket kits are available in zinc and black finish. Order one kit for each pair of slides.

For zinc finish brackets order kit number 4180-0255-XE. For black finish brackets order kit number 4180-0257-XE. Each kit contains 4 brackets, bracket mounting screws, and slide mounting screws.

Specifications

- Slide members: Cold rolled steel
- Ball retainers: Cold rolled steel
- Ball bearings: Carburized steel

Note: Specifications, materials, prices, terms, and delivery are subject to change without notice.



ACCURIDE INTERNATIONAL INC.

12311 Shoemaker Avenue
 Santa Fe Springs, CA 90670
 TEL (562) 903-0200
 FAX (562) 903-0208
 www.accuride.com

Manufacturing, Engineering, and Sales
 United States • Germany • Japan • Mexico • United Kingdom